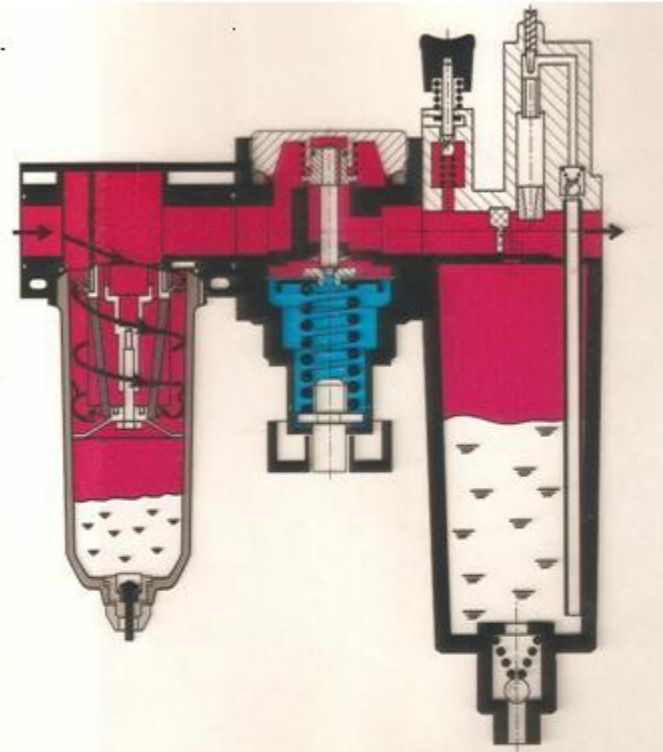


Kolbenverdichter  
piston compressor

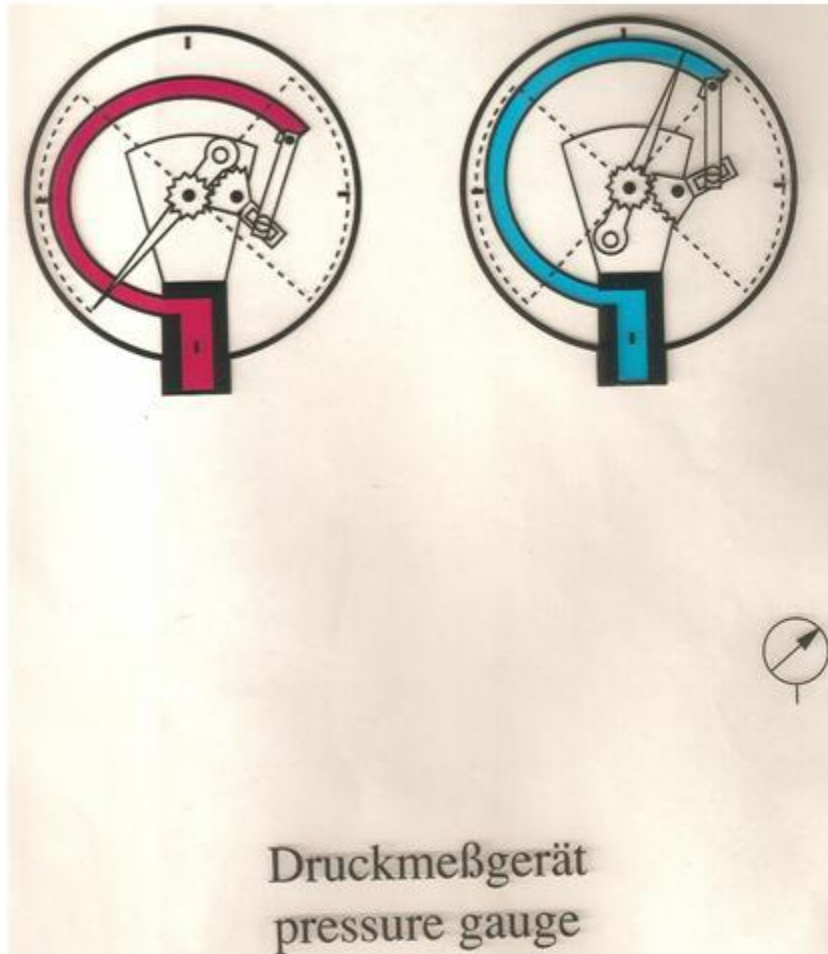


Wartungseinheit  
compressed air preparation unit

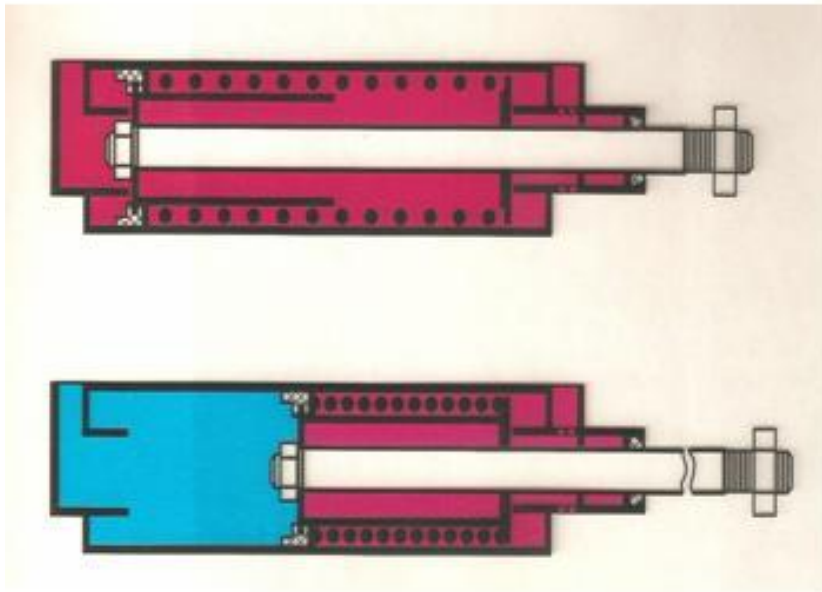
Filtro

Regulador  
de presión

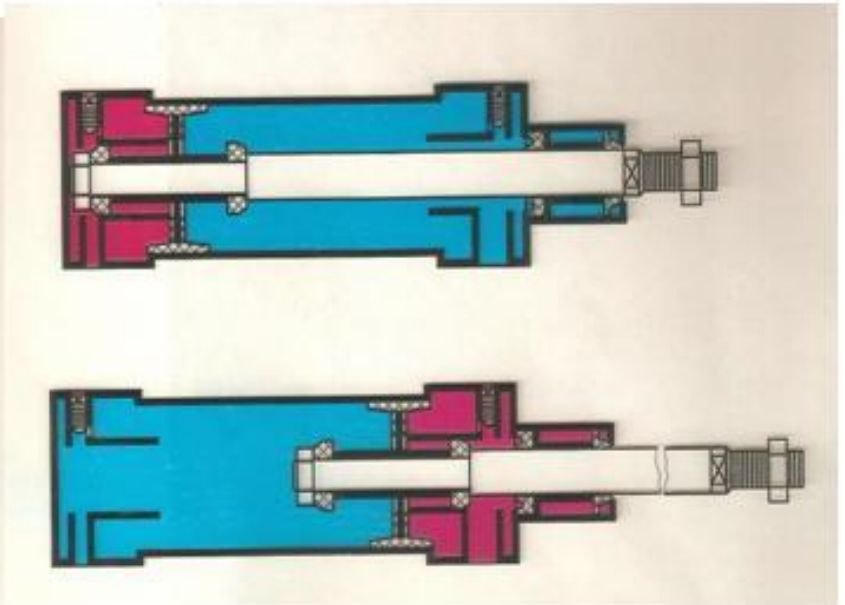
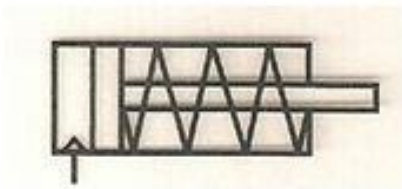
Lubricador



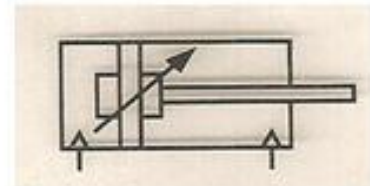
Druckmeßgerät  
pressure gauge

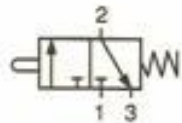
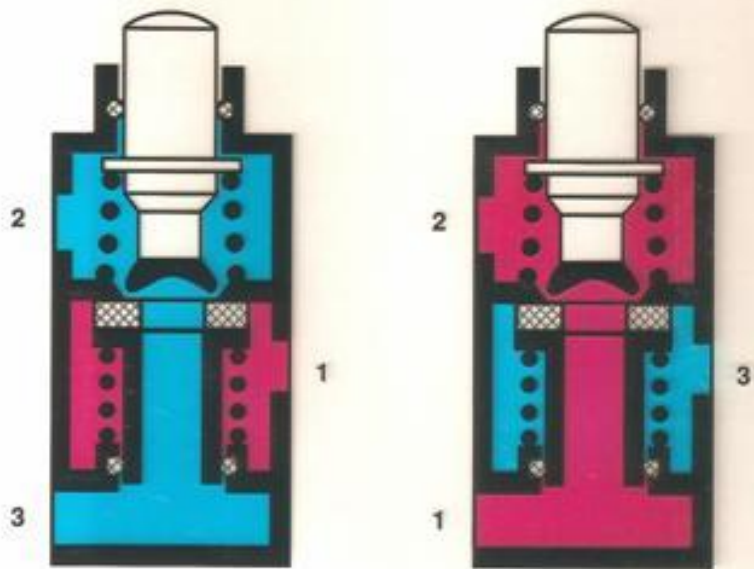


Cilindro simple efecto

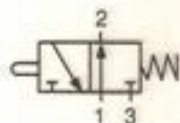


Cilindro doble efecto



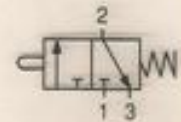
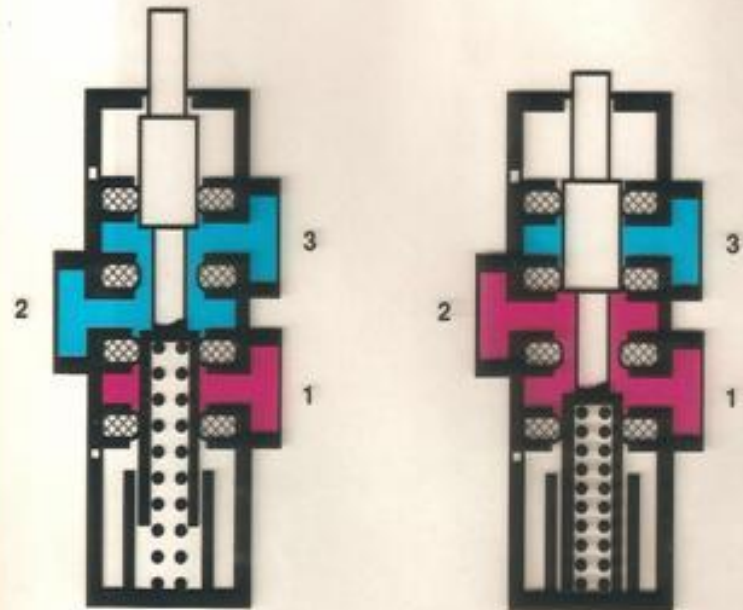


Belüftungsventil  
normally closed ( NC )

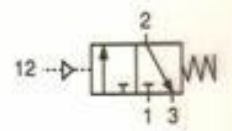
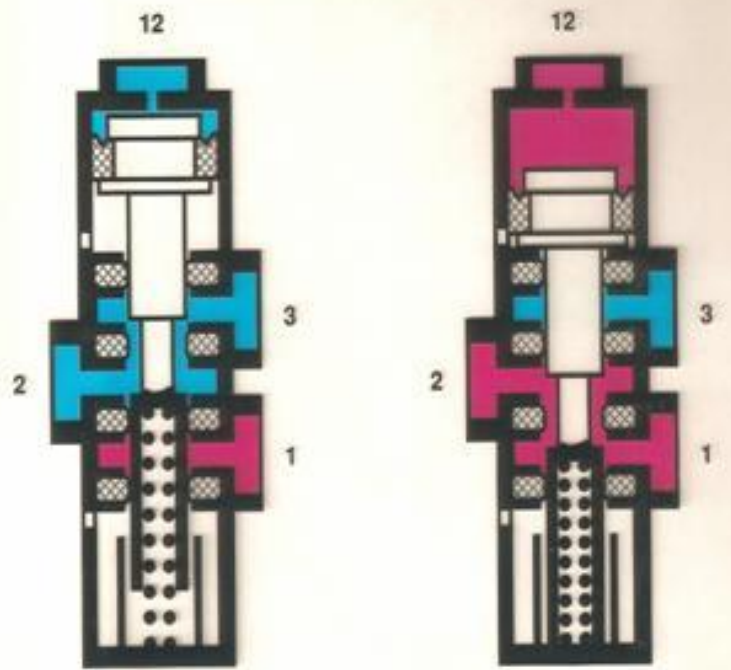


Entlüftungsventil  
normally open ( NO )

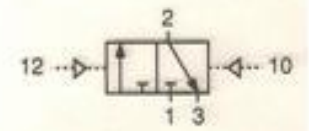
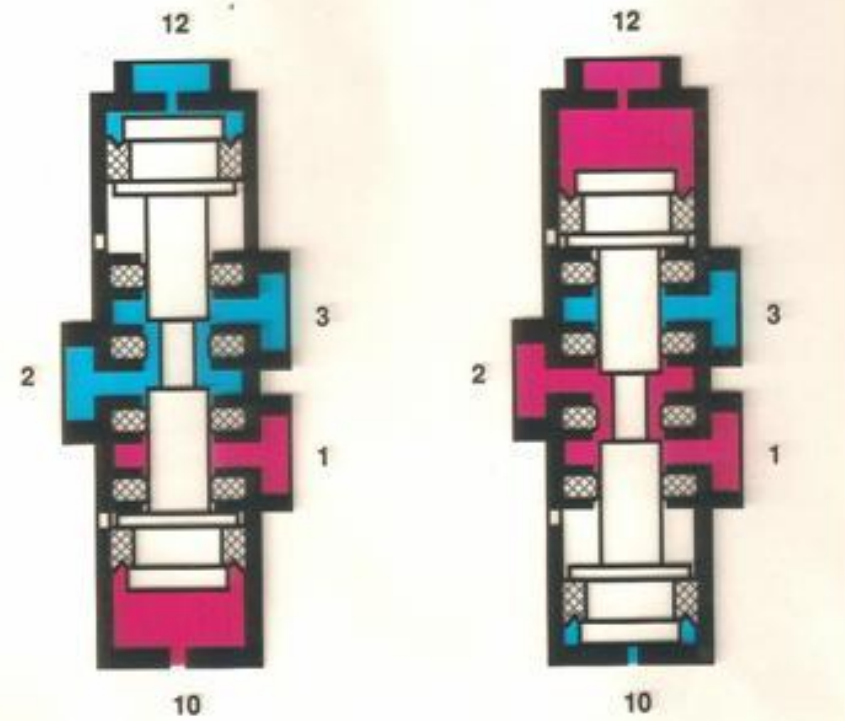
3/2 Wegeventil  
3/2 way valve



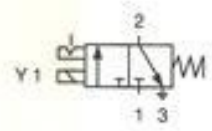
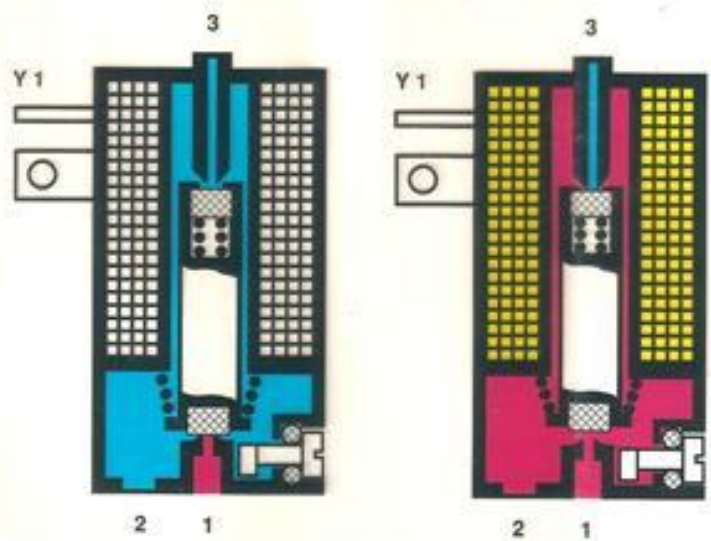
3/2 Wegeventil  
3/2 way valve



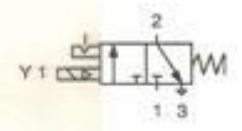
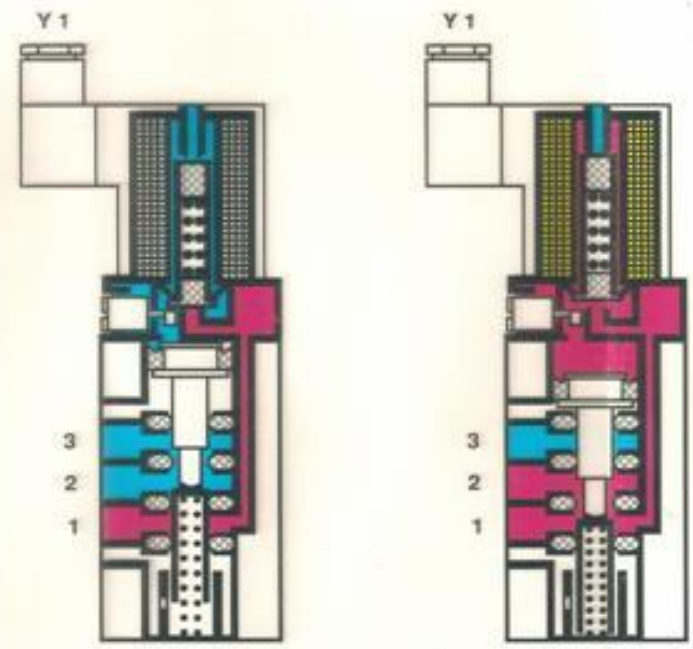
3/2 Wegeventil  
3/2 way valve



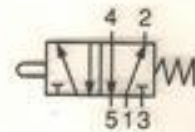
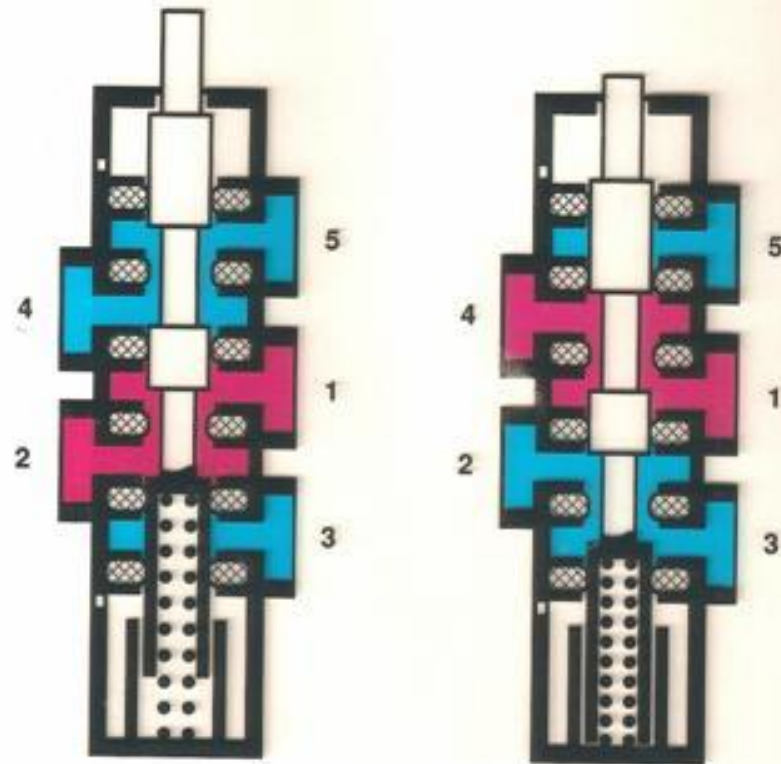
3/2 Wegeventil  
3/2 way valve



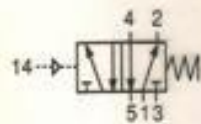
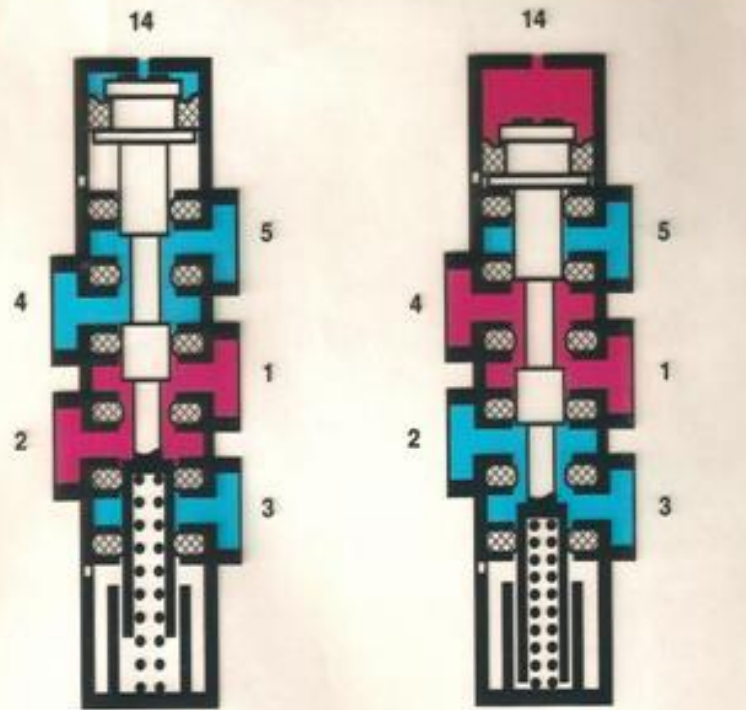
3/2 Wege-Magnetventil  
3/2 way solenoid valve



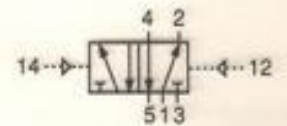
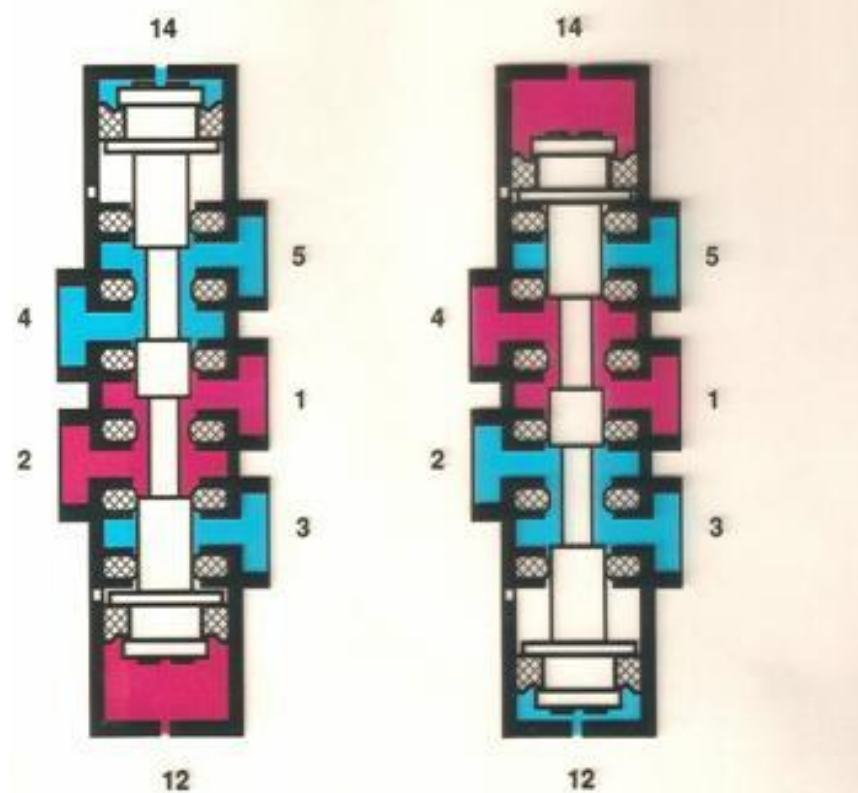
3/2 Wege-Magnetventil  
3/2 way solenoid valve



5/2 Wegeventil  
5/2 way valve

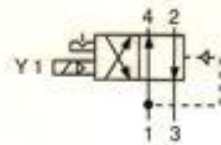
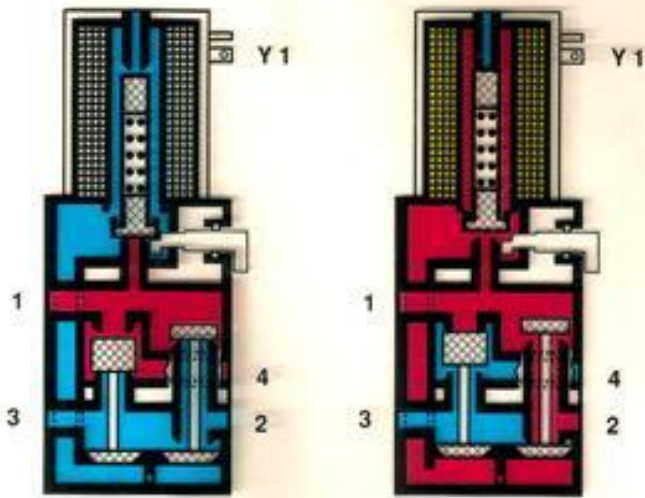


5/2 Wegeventil  
5/2 way valve

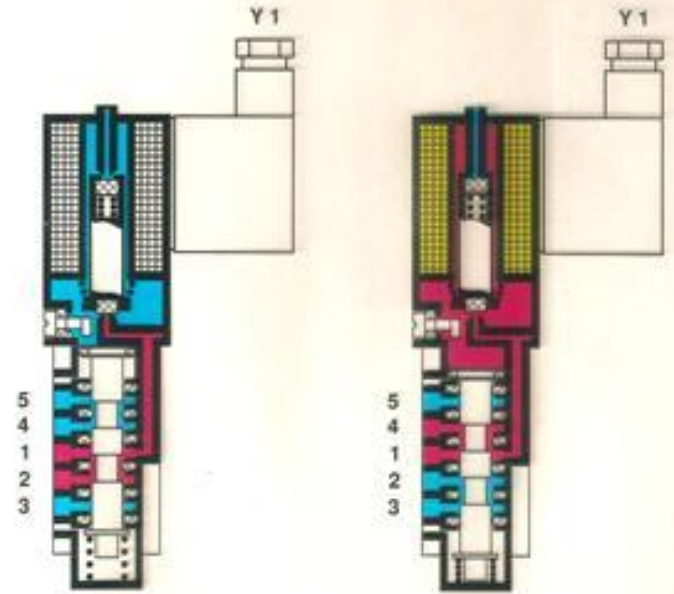


5/2 Wegeventil  
5/2 way valve

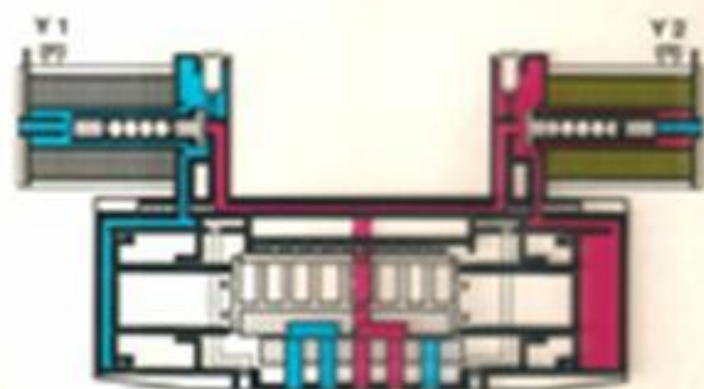




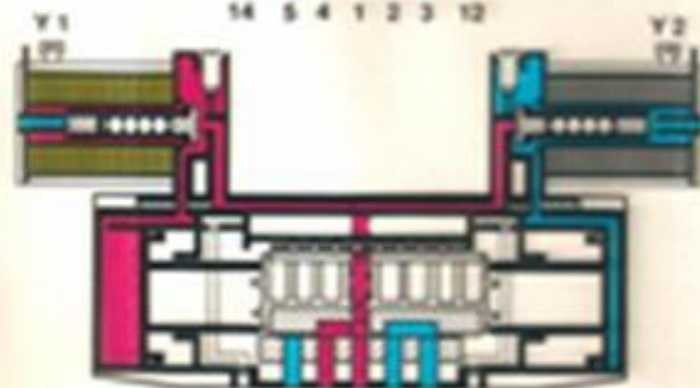
4/2 Wege-Magnetventil  
4/2 way solenoid valve



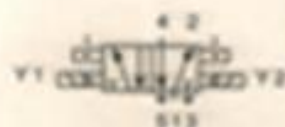
5/2 Wege-Magnetventil  
5/2 way solenoid valve



14 5 4 1 2 3 12

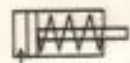


14 5 4 1 2 3 12

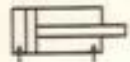


5/2 Wege-Magnetventil nach DIN ISO 5599

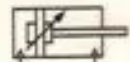
5/2 way valve according to DIN ISO 5599



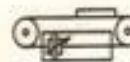
Einfachwirkender Zylinder  
single acting cylinder



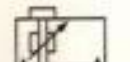
Doppelwirkender Zylinder  
double acting cylinder



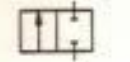
Doppelwirkender Zylinder,  
mit verstellbarer,  
beidseitiger Dämpfung  
double acting cylinder,  
with adjustable cushioning  
on both sides



Kolbenstangenloser Zyl. /  
Prinzip Bandzylinder  
rodless cylinder /  
prinzip band version



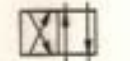
Kolbenstangenloser Zyl. /  
Prinzip Schlitzzylinder  
shuttle cylinder /  
prinzip slot version



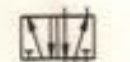
2/2 Wegeventil  
2/2 way valve



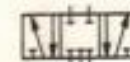
3/2 Wegeventil  
3/2 way valve



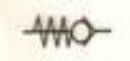
4/2 Wegeventil  
4/2 way valve



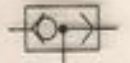
5/2 Wegeventil  
5/2 way valve



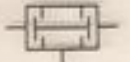
5/3 Wegeventil  
5/3 way valve



Rückschlagventil  
non return valve



Wechselventil  
Shuttle valve



Doppelabsperventil  
double shut-off valve



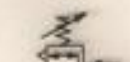
Schnellentlüftungsventil  
quick exhaust valve



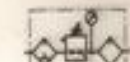
Drosselventil, einstellbar  
throttle, adjustable



Drosselrückschlagventil,  
einstellbar  
check-choke valve,  
adjustable



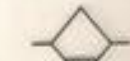
Druckregelventil  
pressure regulator



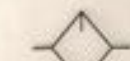
Wartungseinheit  
service unit



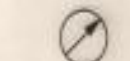
Filter  
filter



Wasserabscheider  
drain valve



Öler  
lubricator



Manometer  
pressure gauge

### Manuelle Betätigung manually operating



allgemein  
general



Druckknopf  
push button



Hebel  
lever



Pedal  
pedal

### Mechanische Betätigung mechanically operating



Taster  
push button



Tastrolle  
roller lever



Tastrolle mit Leerrücklauf  
roller lever actuated in one  
direction only



Feder  
spring

### Pneumatische Betätigung pneumatically operating



Interner Steuerkanal  
internal control line



Druckbeaufschlagung  
pressure actuation

### Elektrische Betätigung electrically operating



Magnet  
solenoid



Magnet und Vorsteuerventil  
solenoid and pilot valve



Magnet und Vorsteuerventil,  
mit Handhilfsbetätigung  
solenoid and pilot valve,  
with manual override

Schaltzeichen nach DIN ISO 1219

circuit symbols according to DIN ISO 1219

Schaltzeichen nach DIN ISO 1219

circuit symbols according to DIN ISO 1219

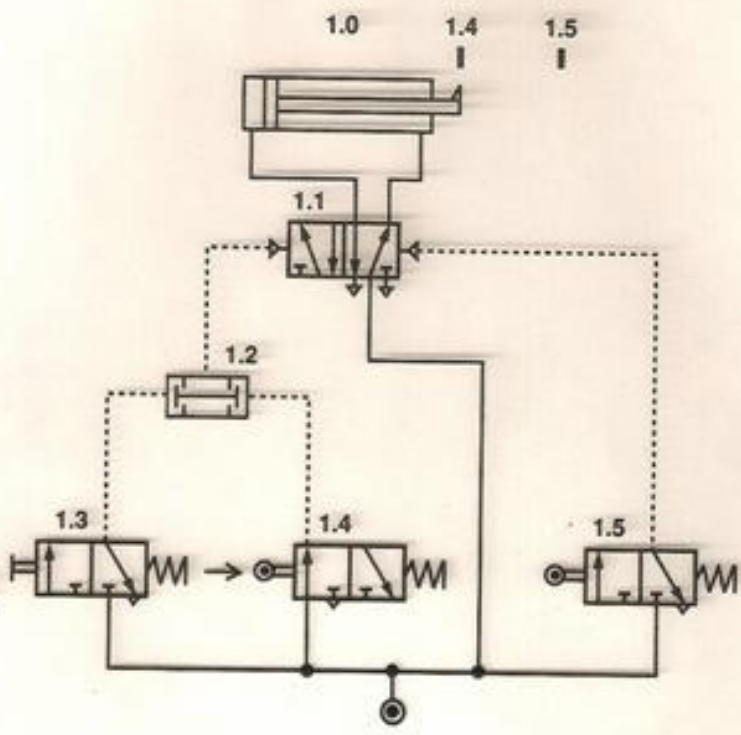
Antriebsglied  
drive component

Stellglied  
actuator

Steuerglied  
control element

Signalglied  
signalling element

Druckquelle  
pressure source



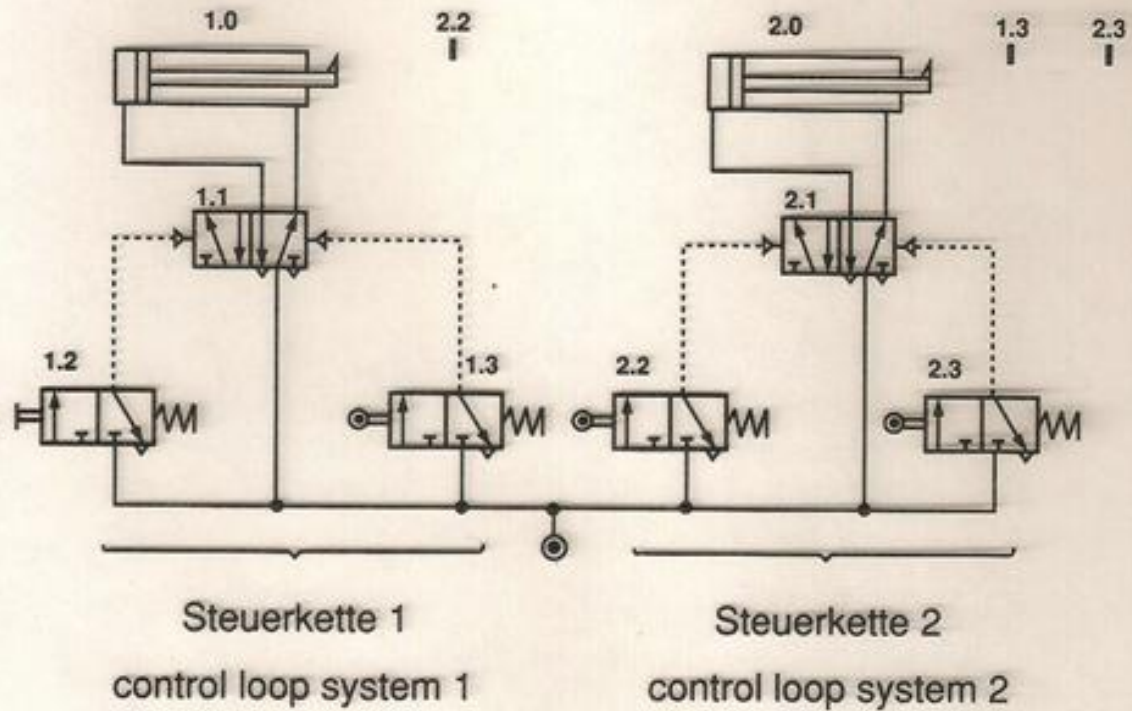
Energie und Signalfluß  
energy and signal flow

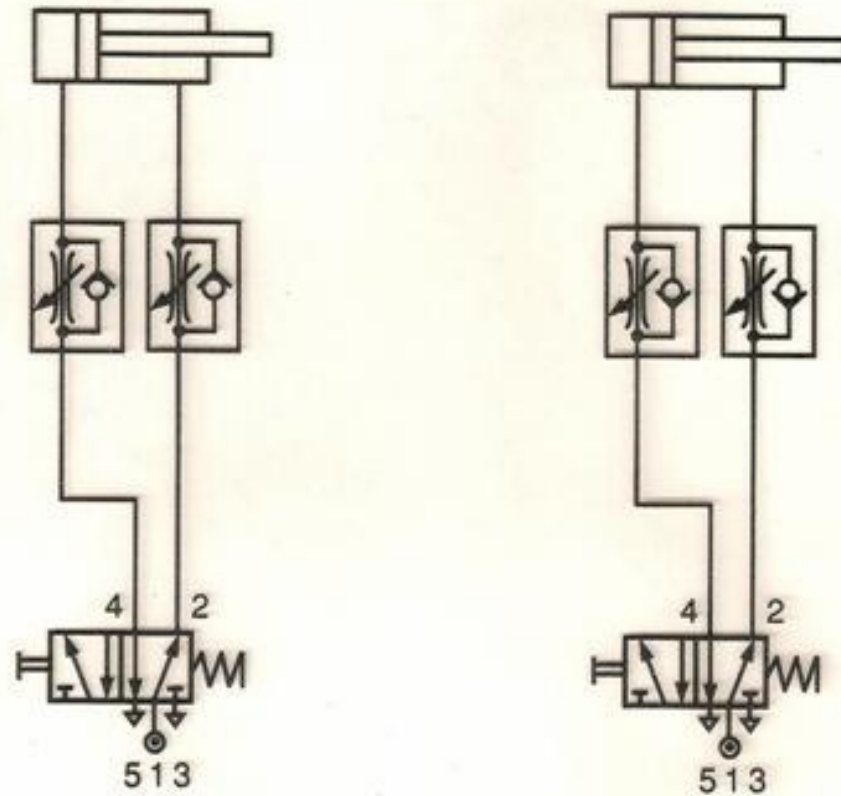
Antriebsglied  
drive component

Stellglied  
actuator

Signalglied  
signalling element

Druckquelle  
pressure source





supply air flow control / exhaust air flow control