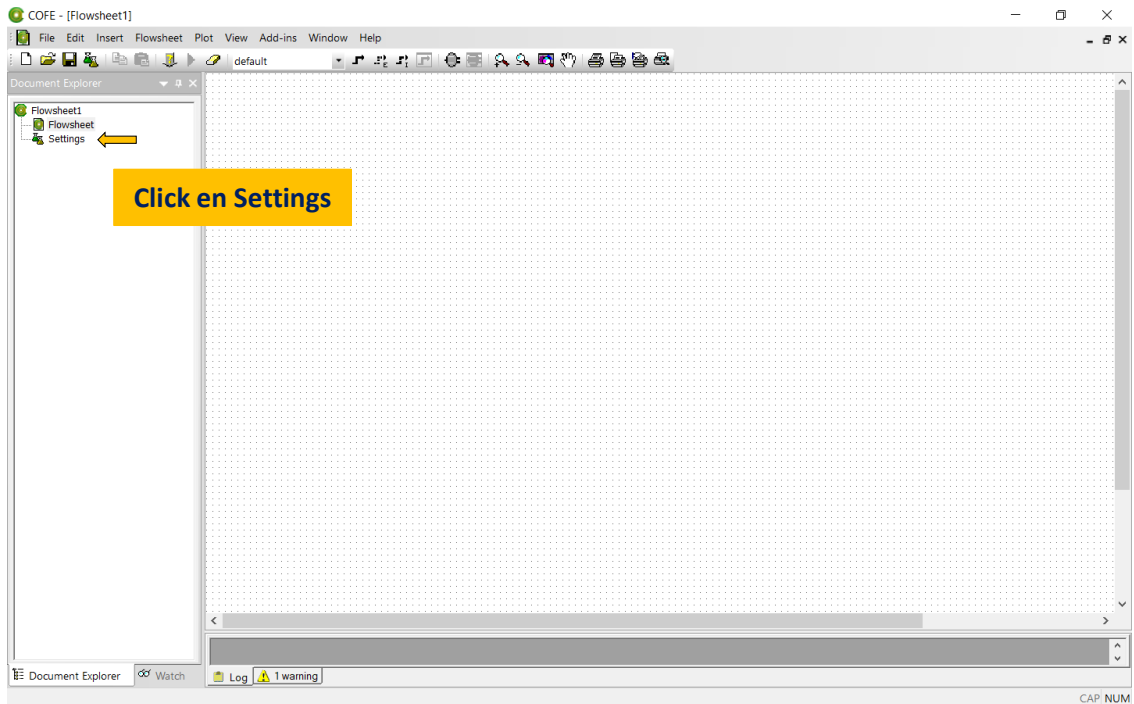


# Guía Visual para seleccionar compuestos en el simulador COCO

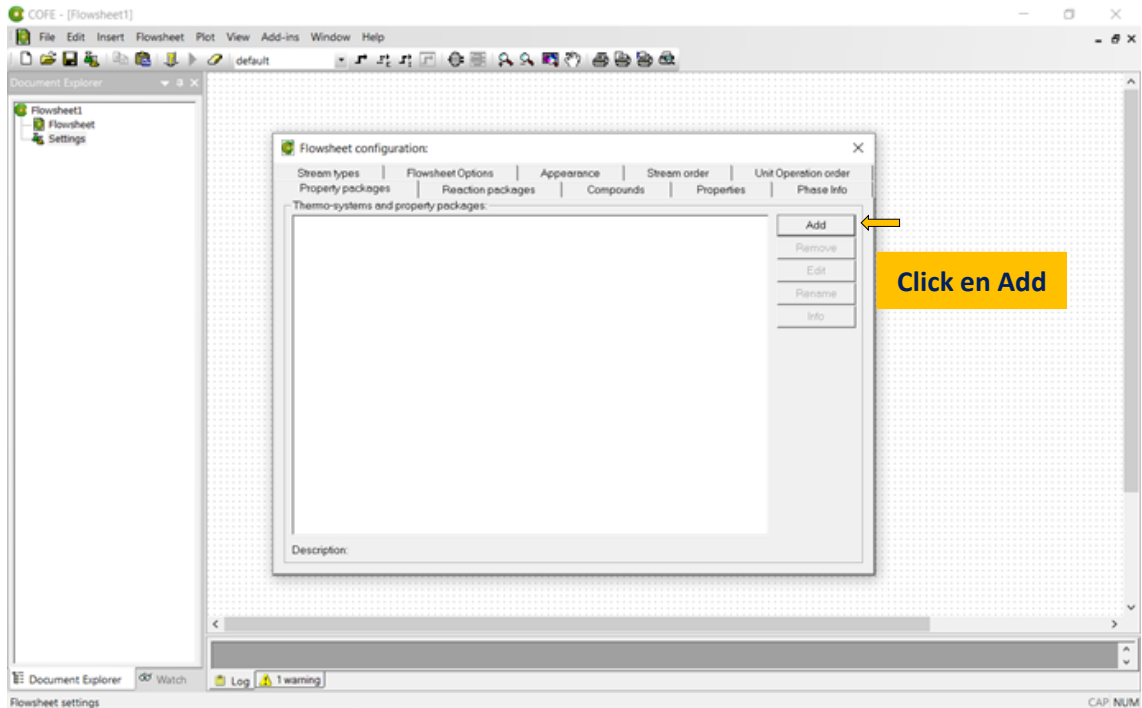
Dr. Ing. Jorge E. Núñez Mc Lead - 2020



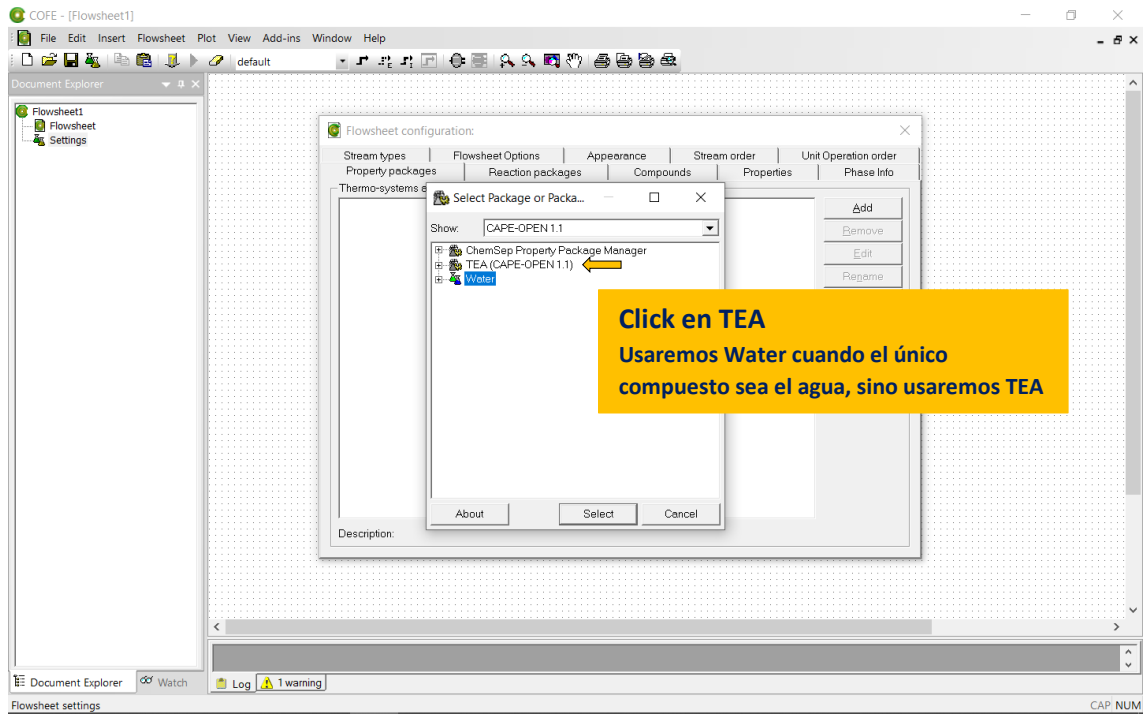
## 1. Ejecutar el COFE o el COFE64



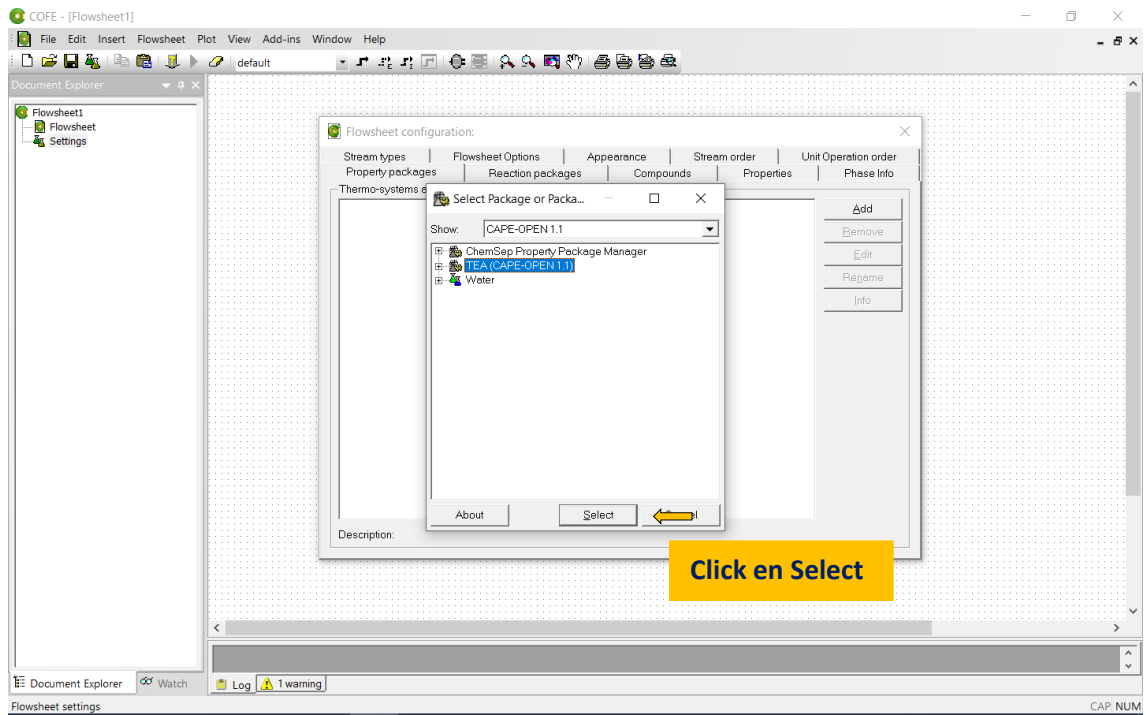
## 2



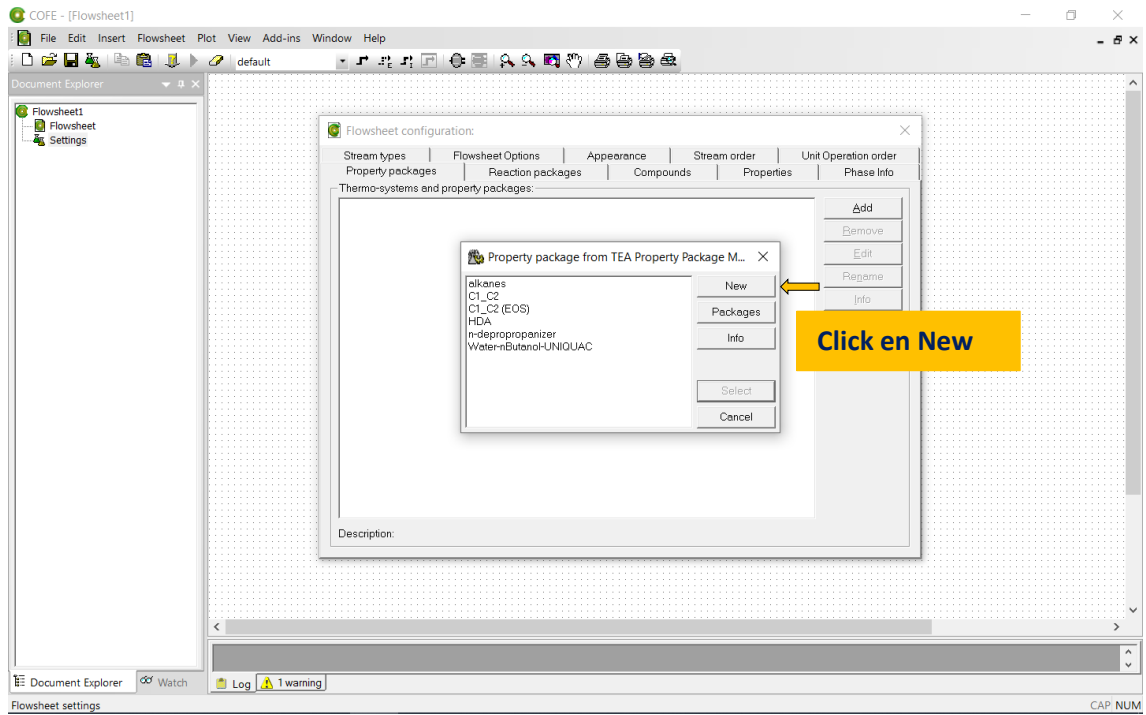
3



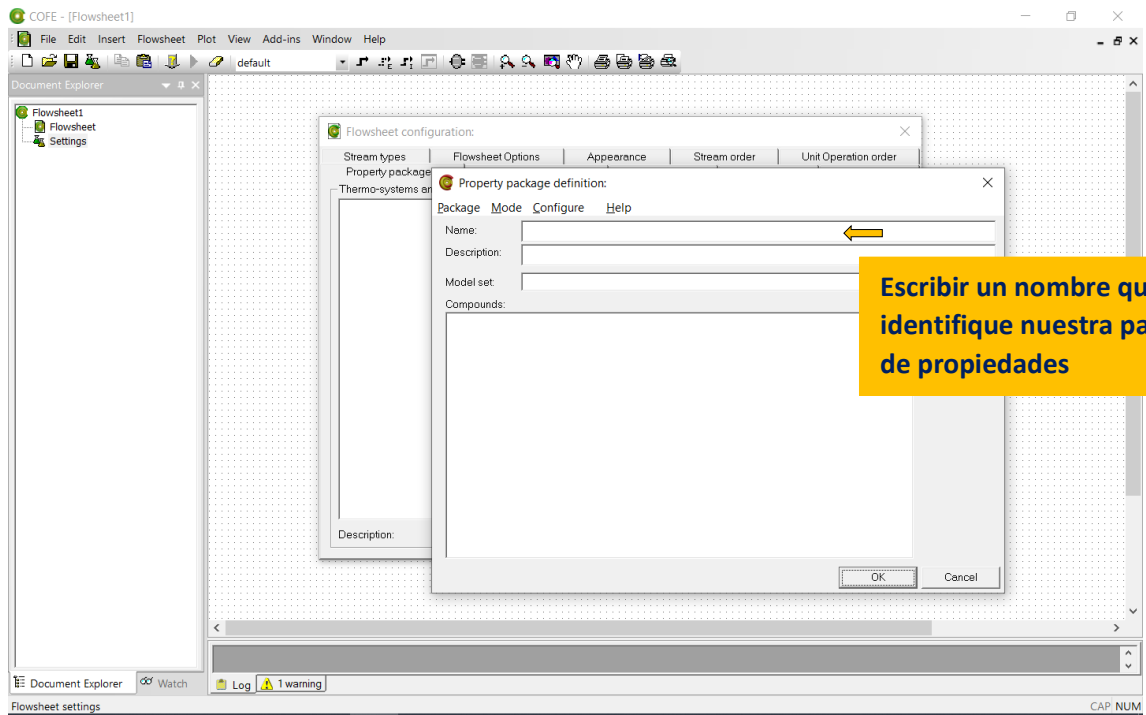
4



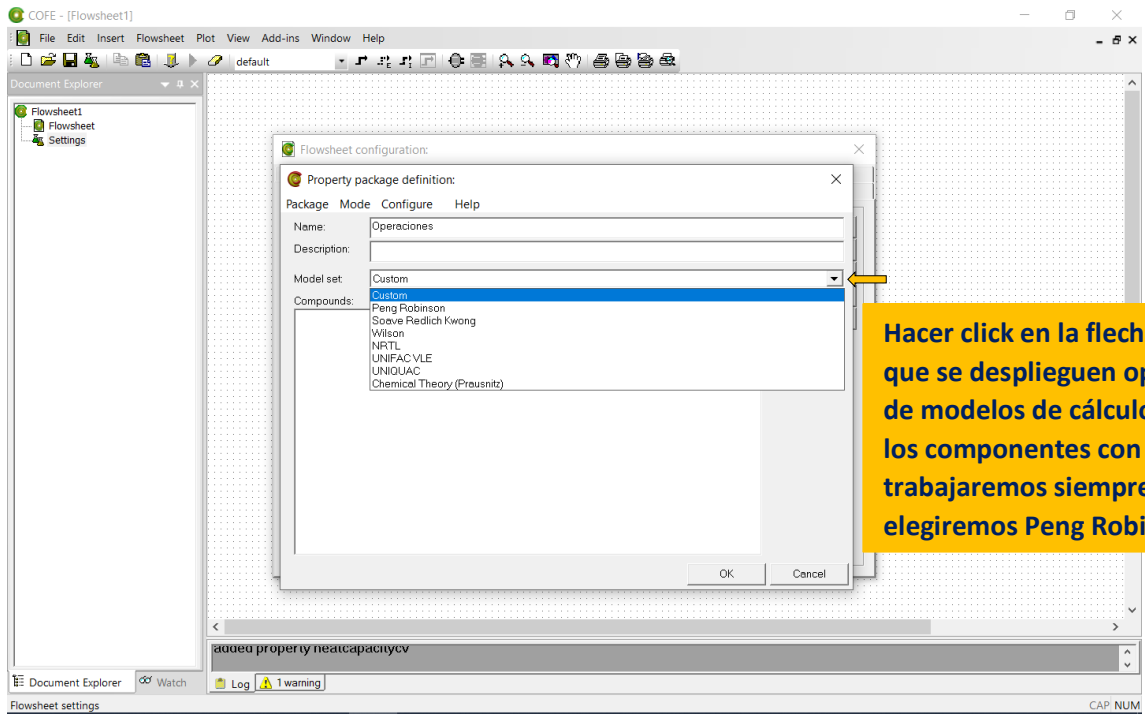
5



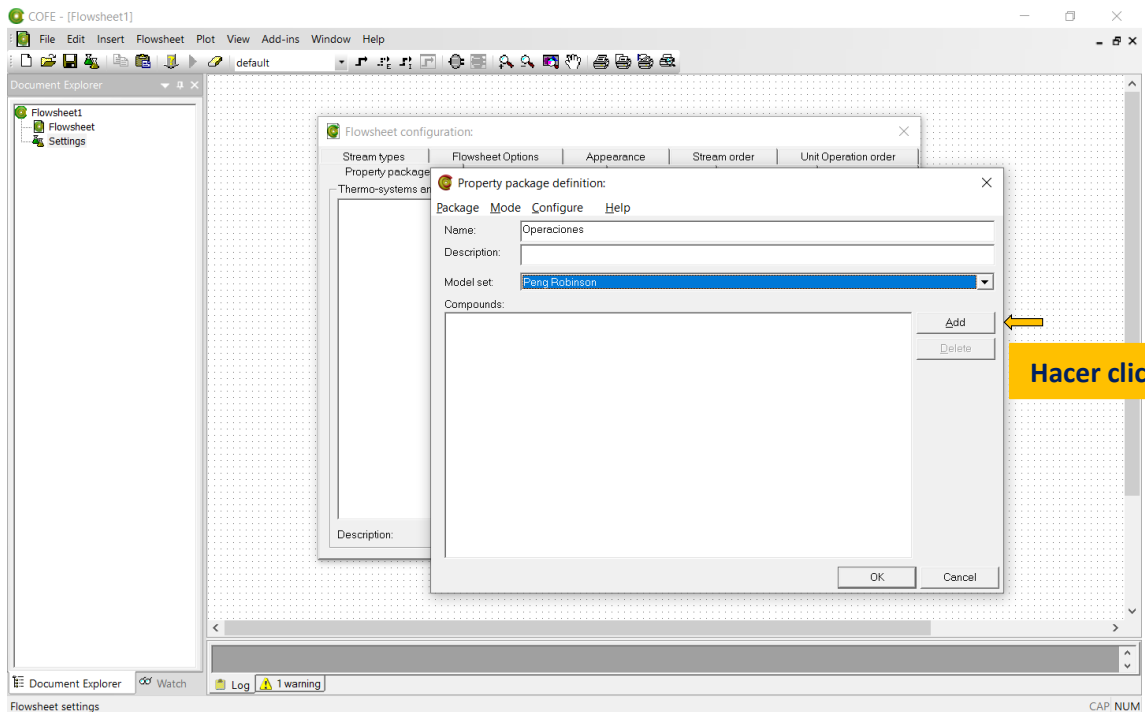
6



7



8



9

Flowsheet configuration: Flowsheet Options | Appearance | Stream order | Unit Operation order

Property package definition: Add components:

PCD File: [C:\Users\jnmcleod\AppData\Local\COCOSimulator\COCO\data\ChemSep1] PCD Manager Browse

Formula	Name	Mol Weight	CAS	Default name
A0 01N1 56...	Air	28.96	132259-10-0	Air
Ar	Argon	39.948	7440-37-1	Argon
Br2	Bromine	159.808	7726-95-6	Bromine
CCl4	Carbon tetrachloride	153.823	56-23-5	Carbon tetrachloride
CO	Carbon monoxide	28.0101	630-08-0	Carbon monoxide
CO2	Carbon dioxide	44.0095	124-38-9	Carbon dioxide
CS2	Carbon disulfide	76.1407	75-15-0	Carbon disulfide
CCl2O	Phosgene	98.9161	75-44-5	Phosgene
C2Cl4O	Trichloroacetyl chloride	181.833	76-02-8	Trichloroacetyl chloride
HCl	Hydrogen chloride	36.4609	7647-01-0	Hydrogen chloride
Cl2	Chlorine	70.906	7782-50-5	Chlorine
HI	Hydrogen iodide	127.912	10034-95-2	Hydrogen iodide
H2	Hydrogen	2.01588	1333-74-0	Hydrogen
H2O	Water	18.0153	7732-18-5	Water

Filter by:

Add using default name

OK Cancel

Flowsheet settings CAP NUM

**Escribir el nombre del compuesto en inglés. Por ej. Ethanol**

10

Flowsheet configuration: Flowsheet Options | Appearance | Stream order | Unit Operation order

Property package definition: Add components:

PCD File: [C:\Users\jnmcleod\AppData\Local\COCOSimulator\COCO\data\ChemSep1] PCD Manager Browse

Formula	Name	Mol Weight	CAS	Default name
CH4O	Methanol	32.0419	67-56-1	Methanol
C2H6O	Ethanol	46.0684	64-17-5	Ethanol
C2H6O2	2-Hydroxyethanol	62.0678	107-21-1	Ethylene glycol
C2H6S	Thioethanol	62.134	75-08-1	Ethyl mercaptan
C3H8O	1-methylethanol	60.095	67-63-0	Isopropanol
C4H10O	Propylmethanol	74.1216	71-36-3	1-butanol
C4H10O	Trimethylmethanol	74.1216	75-85-0	2-methyl-2-propanol
C4H10O3	2,2'-oxybis-ethanol	106.12	111-46-6	Diethylene glycol
C6H14O4	2,2'-[1,2-ethanediylbis(oxy)]...	150.173	112-27-6	Triethylene glycol
C8H18O5	2,2'-[oxybis(2,1-ethenediyl...]	194.225	112-60-7	Tetraethylene glycol
C5H12O	2,2,2-Trimethylethanol	88.1482	75-84-3	2,2-dimethyl-1-propanol
CH4S	Thiomethanol	48.1075	74-93-1	Methyl mercaptan
C2H7NO	Monoethanolamine	61.0831	141-43-5	Monoethanolamine
C4H11NO2	Diethanolamine	105.136	111-42-2	Diethanolamine

Filter by: Ethanol

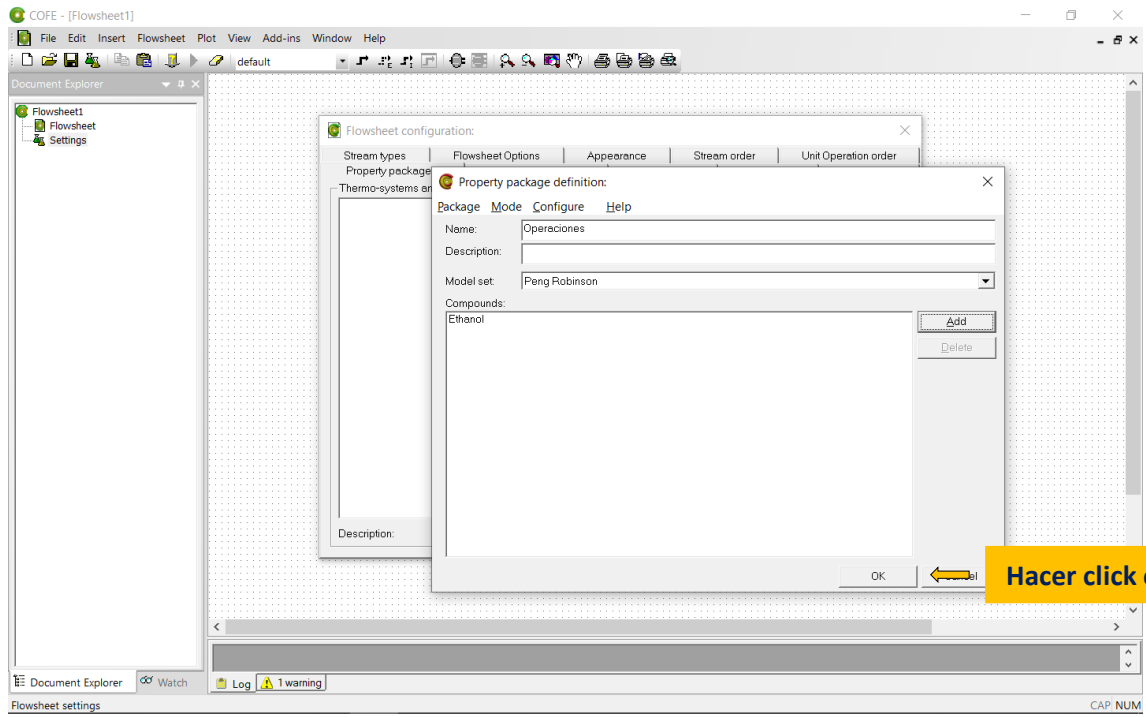
Add using default name

OK Cancel

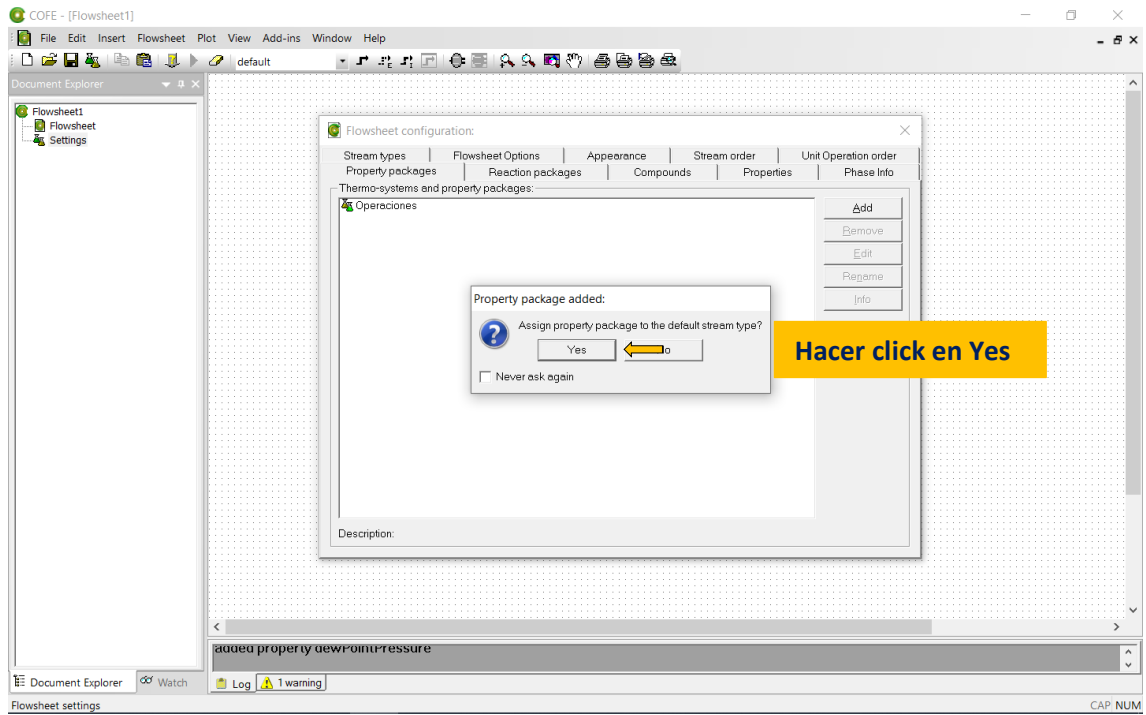
Flowsheet settings CAP NUM

**Hacer click sobre la fórmula del etanol para seleccionarlo y luego click en OK**

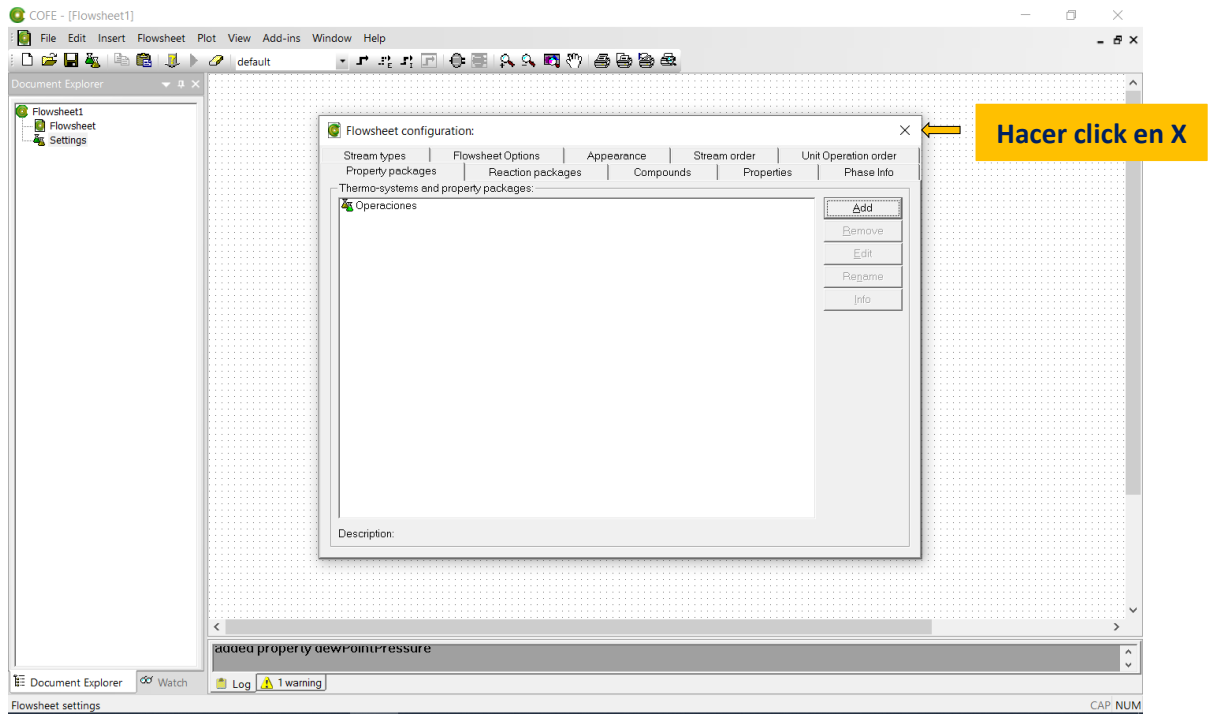
11



12



13



14

