

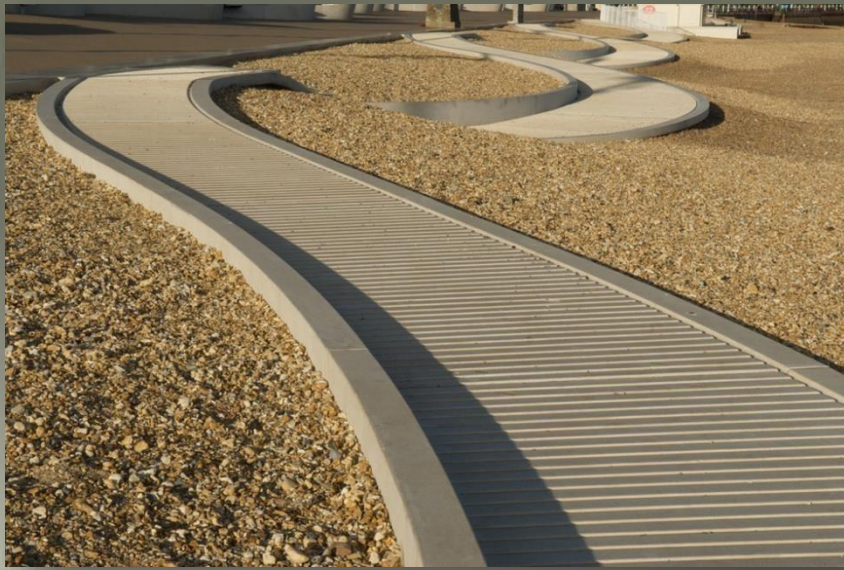
# DISEÑO Y MATERIALIDAD I

## ELEMENTOS A METERIALIZAR:

- Senderos
- Pérgolas
- Canteros
- Cierres y barandas
- Fuentes
- Bancos
- Pisos
- Iluminación
- Rampas y escalinatas
- Juegos

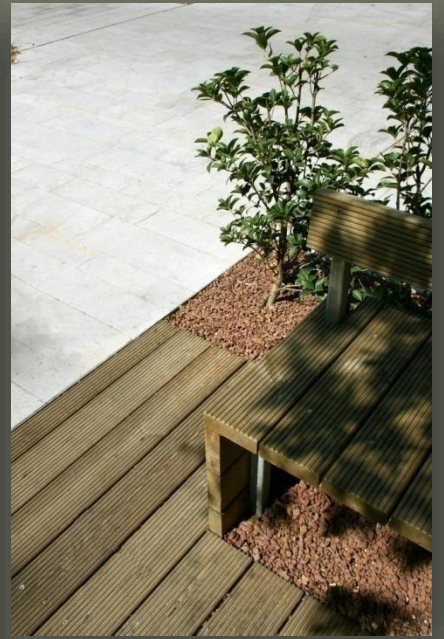
SENDEROS













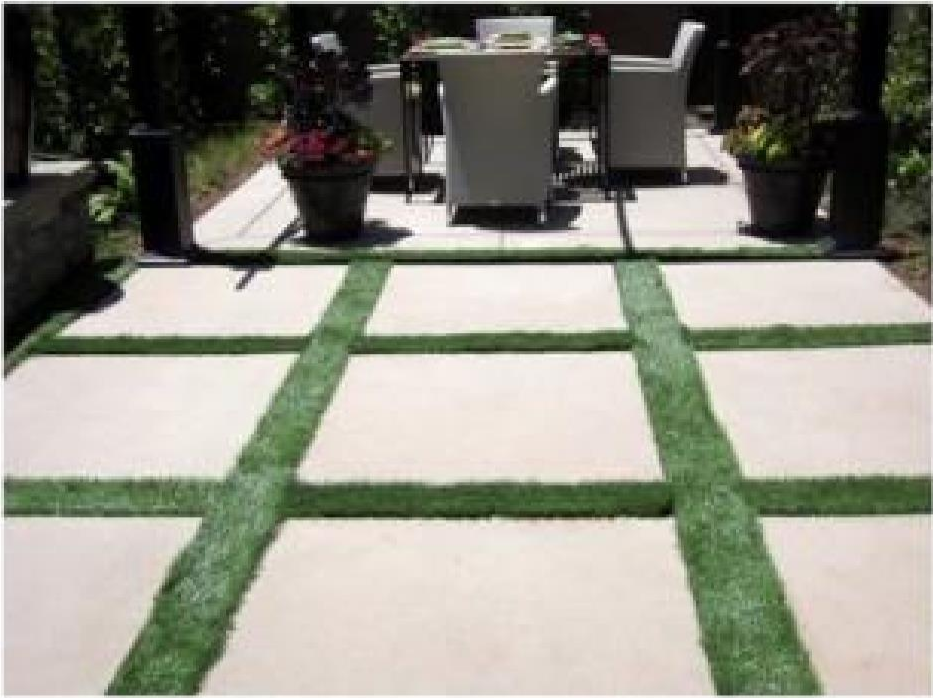




CANTEROS











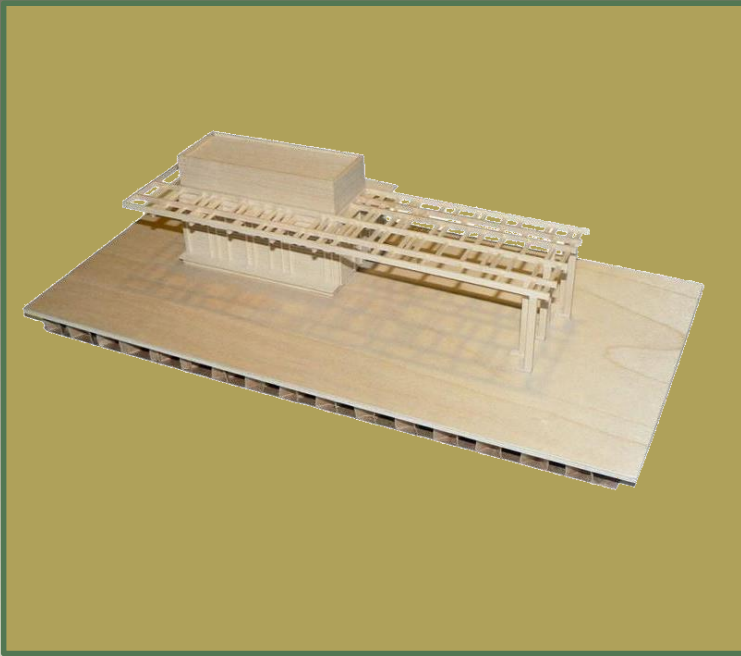






PERGOLAS















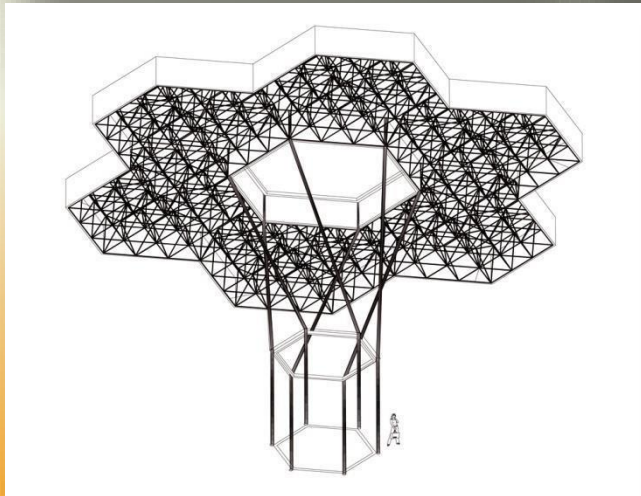












# CIERRES Y BARANDAS





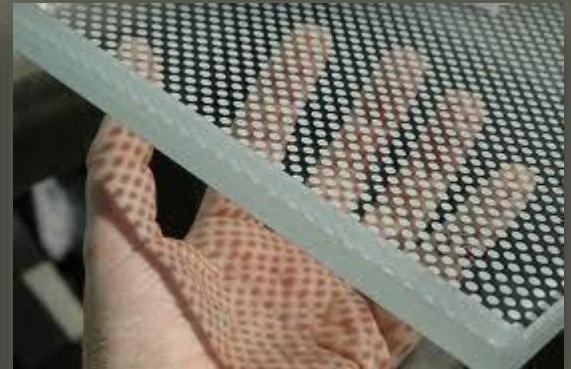




VIDRIO INASTIYABLE SERIGRAFIADO

VIDRIO INASTIYABLE SERIGRAFIADO IGUAL  
AL LOS USADOS EN EDIFICIOS DE OFICINA





# CIERRES









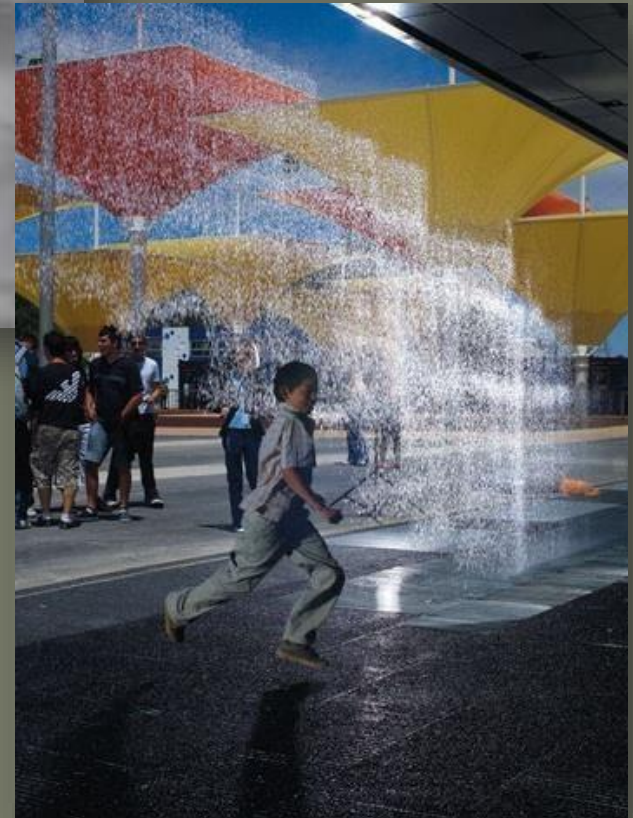


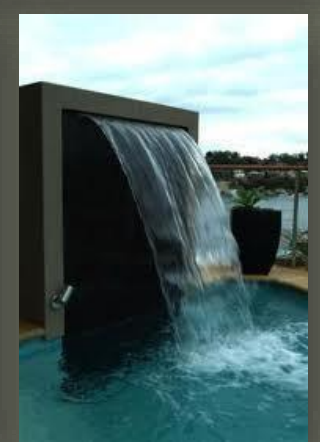
CIERRES CON  
COR TEN



FUENTES





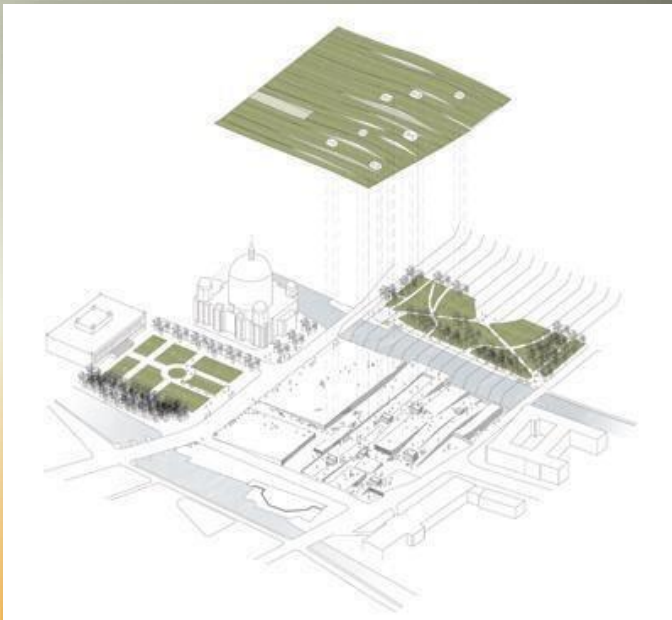












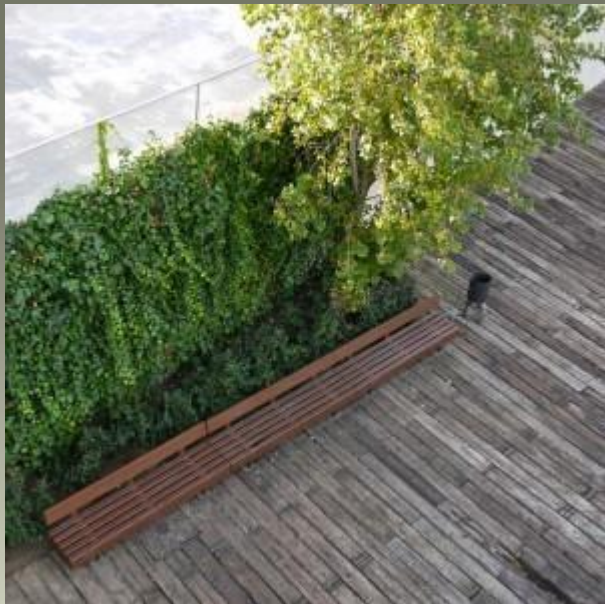


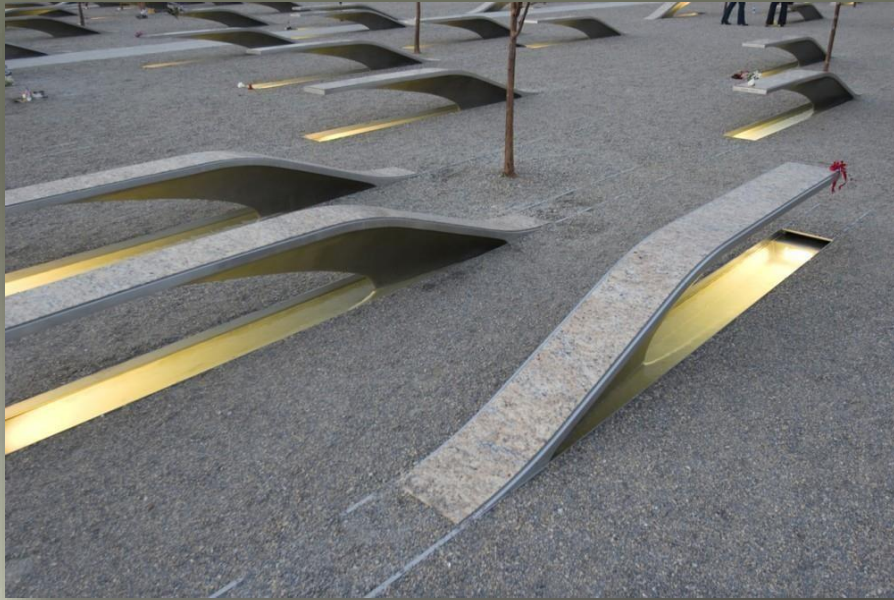




**BANCOS**































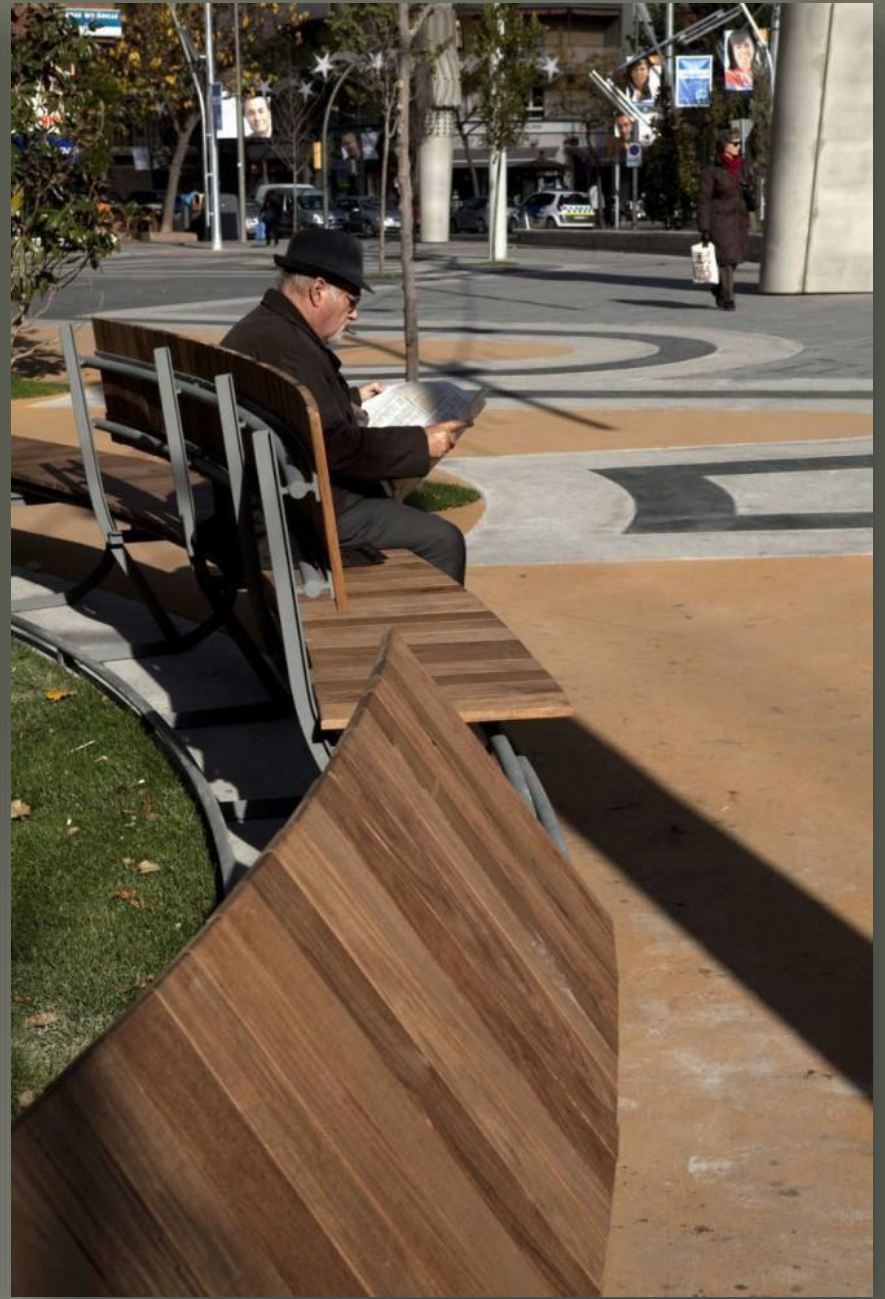




# PENDIENTES Y MUROS DE CONTENCIÓN



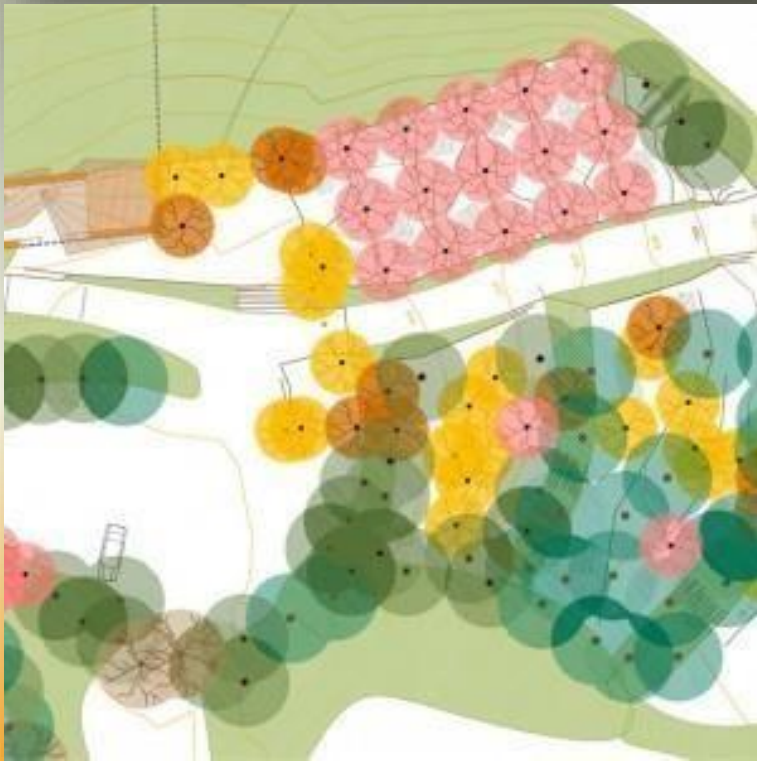
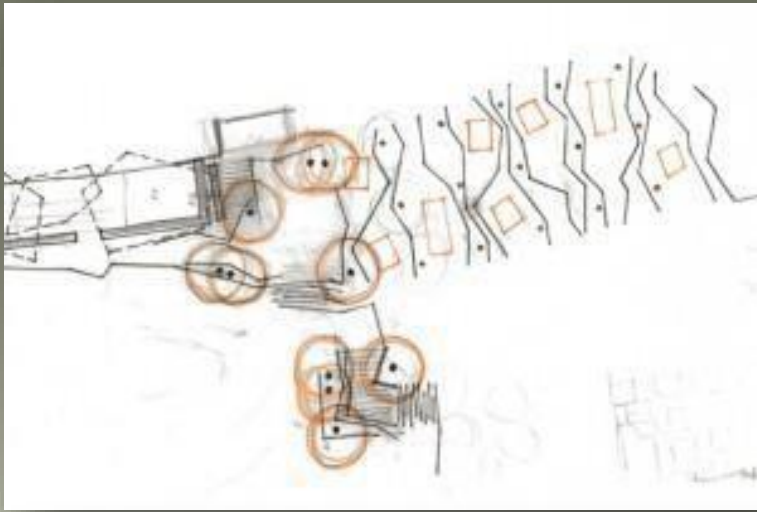












GRADAS







Docentes: Prof. Titular Arq. JUAN CARLOS ALÉ  
Prof. JTP Arq. SILVIA SEGOVIA

**ARQUITECTURA 1 TALLER DE INTEGRACION PROYECTUAL**

**2022**

Carrera de Arquitectura

Facultad de Ingeniería - UN Cuyo