

DISEÑO TRIDIMENSIONAL - ADICIÓN

PRINCIPIOS
TRANSFORMADORES

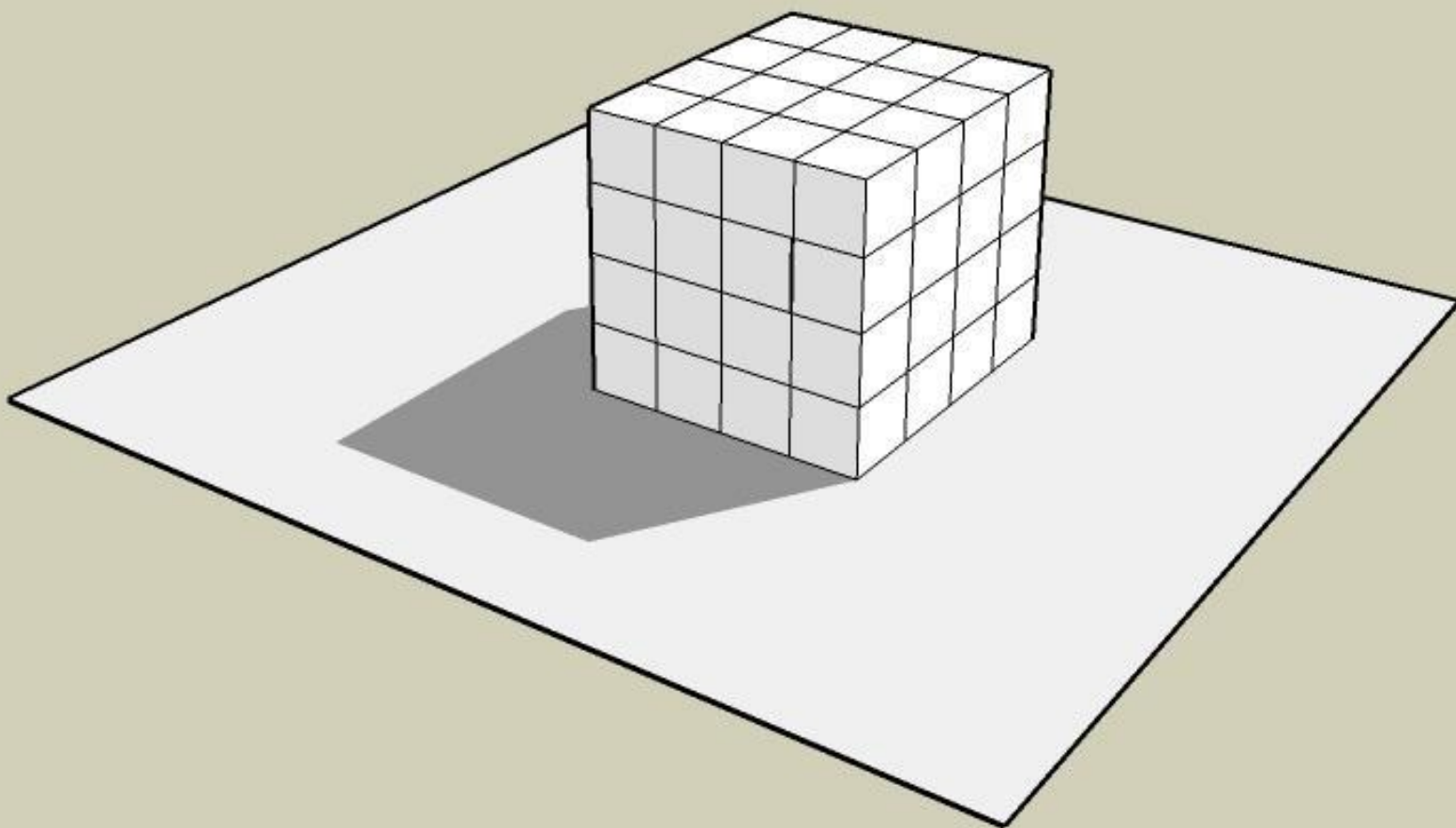
4

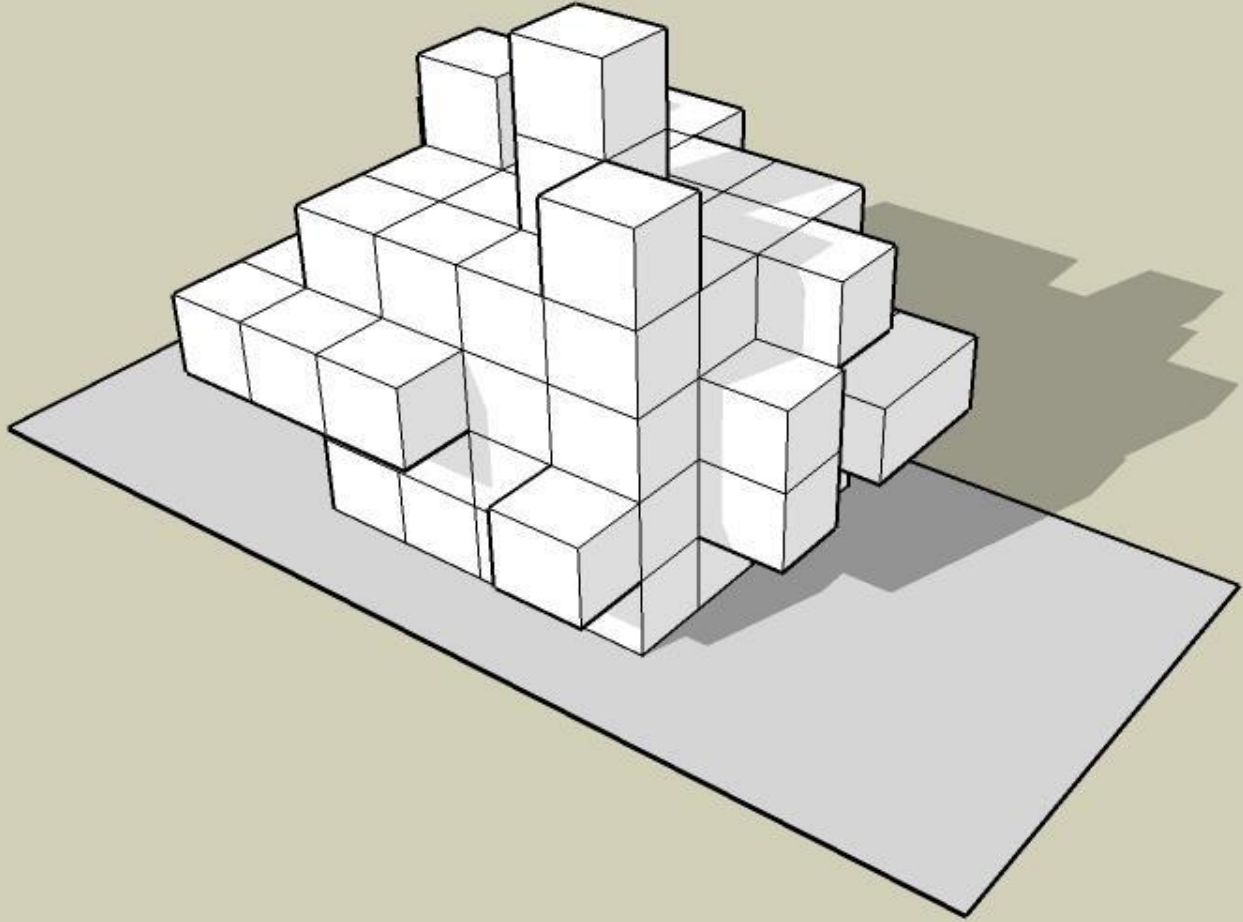
ADICION
SUSTRACCION
DIVISION
MULTIPLICACION

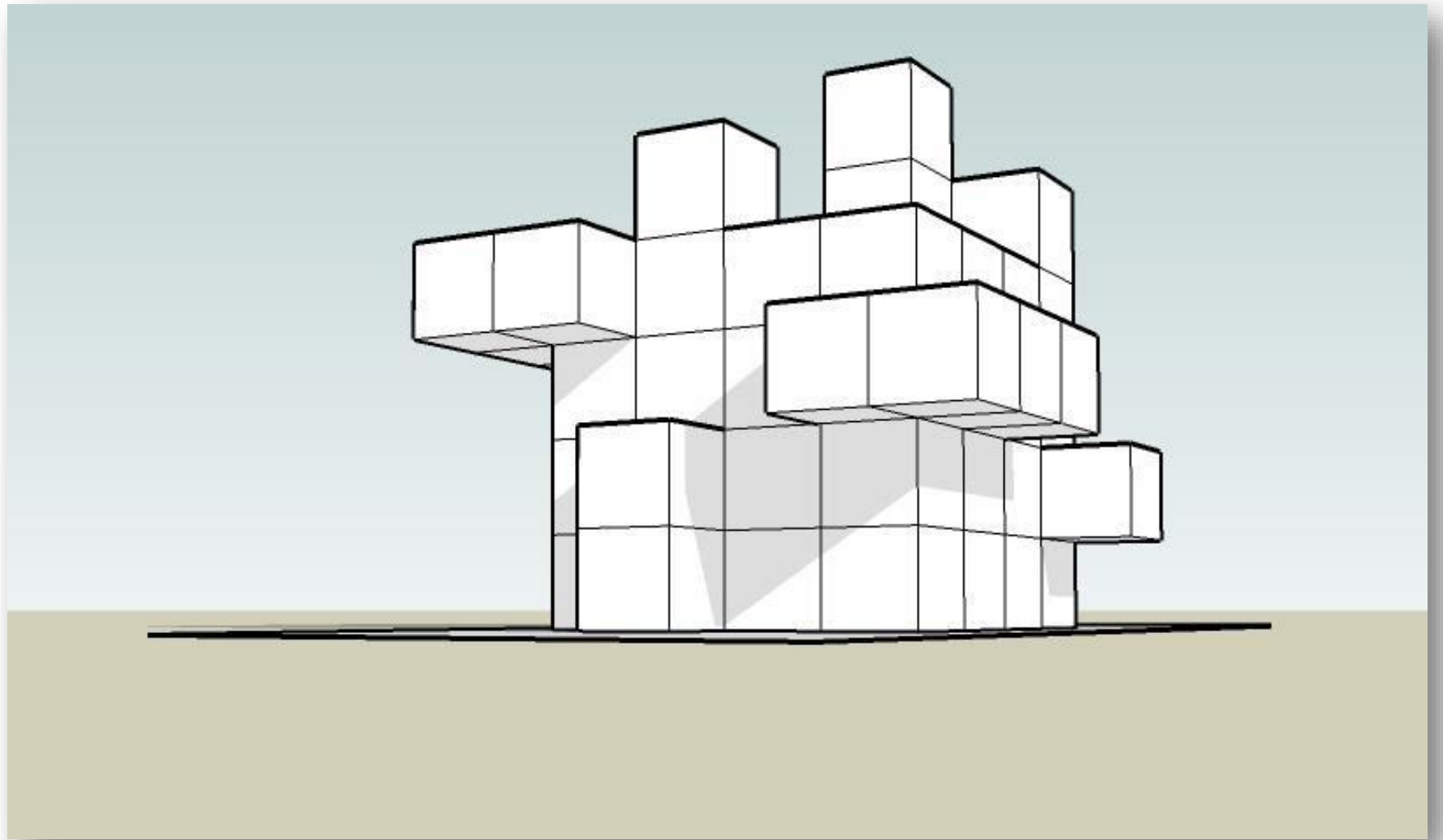
ADICIÓN

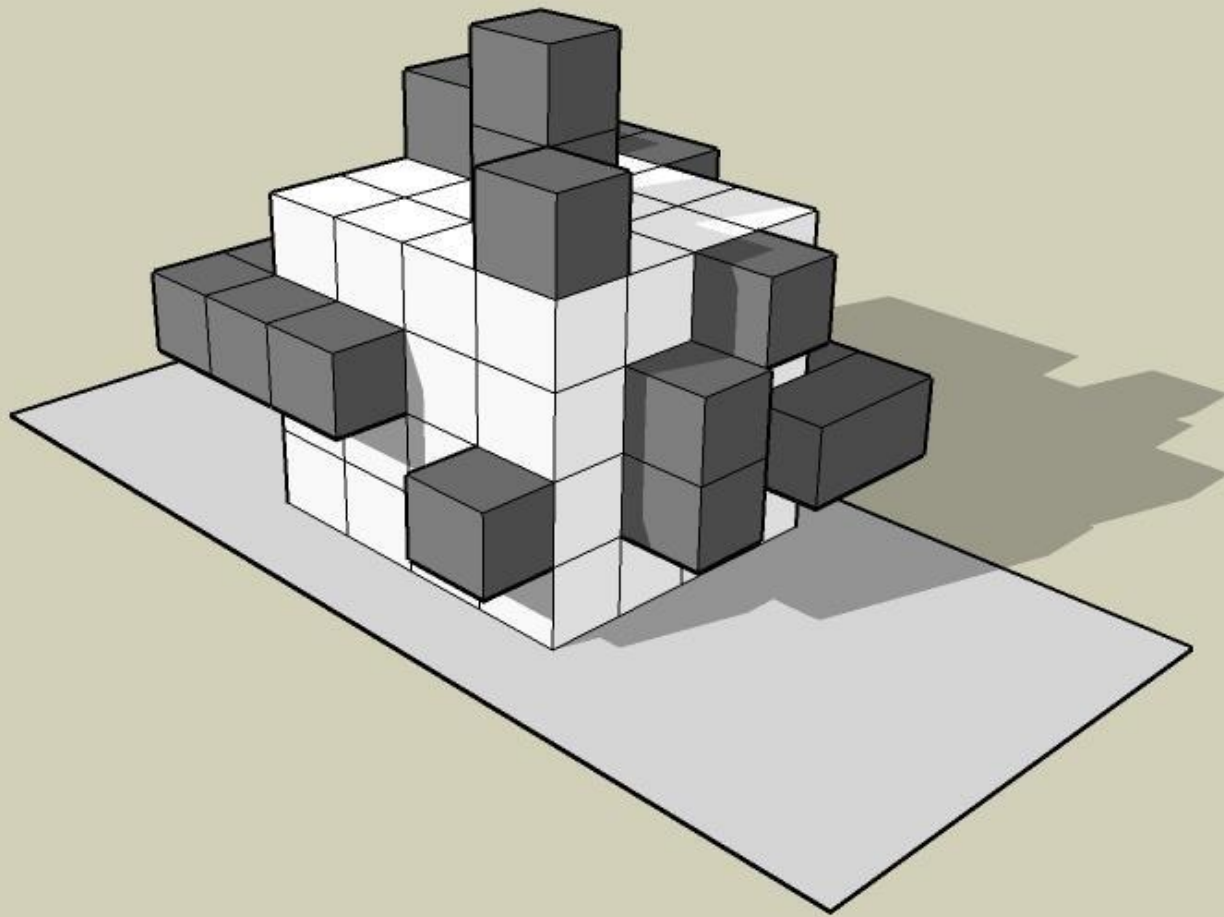
ADICIÓN

- 1 Acción que consiste en añadir una cosa a otra.
- 2 Operación que consiste en unir varias cantidades en una sola: *este ejercicio se resuelve con una simple adición. suma.*
- 3 Parte añadida en una obra: *el libro se ha enriquecido con las adiciones de los traductores*





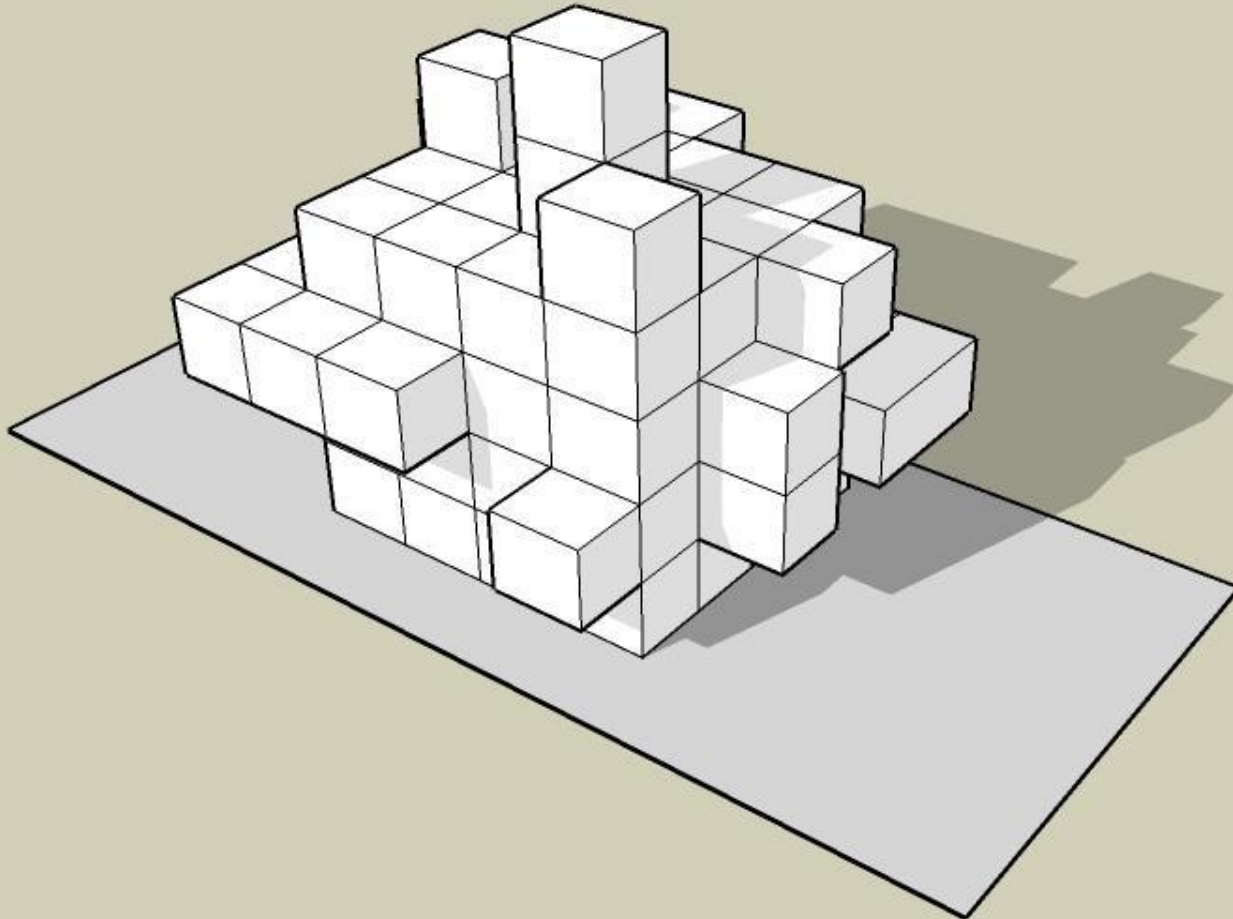


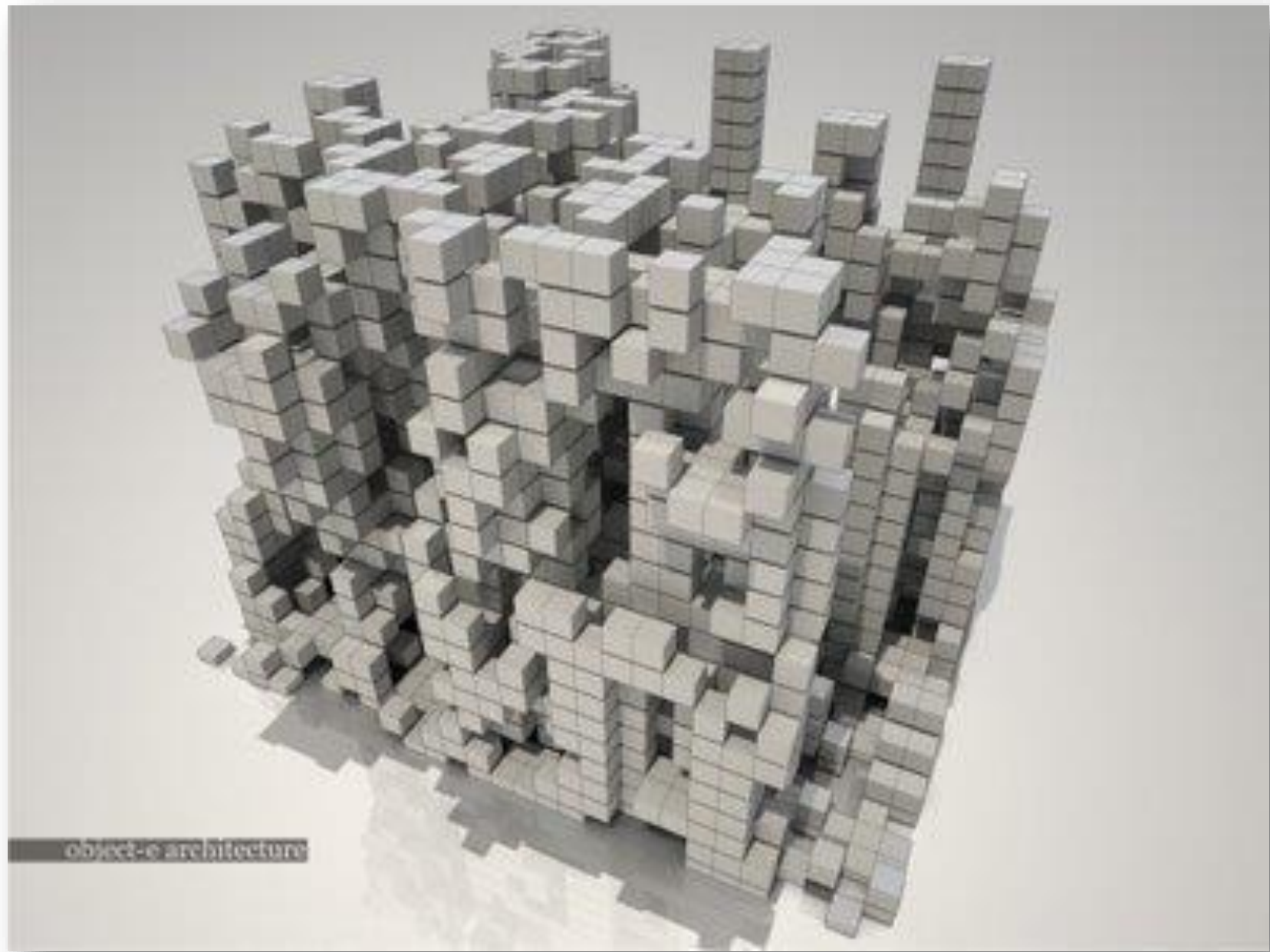


Adición por:

1. ALFORJA
2. SUPERPOSICIÓN
3. YUXTAPOSICIÓN
4. FUSIÓN

1. ALFORJA





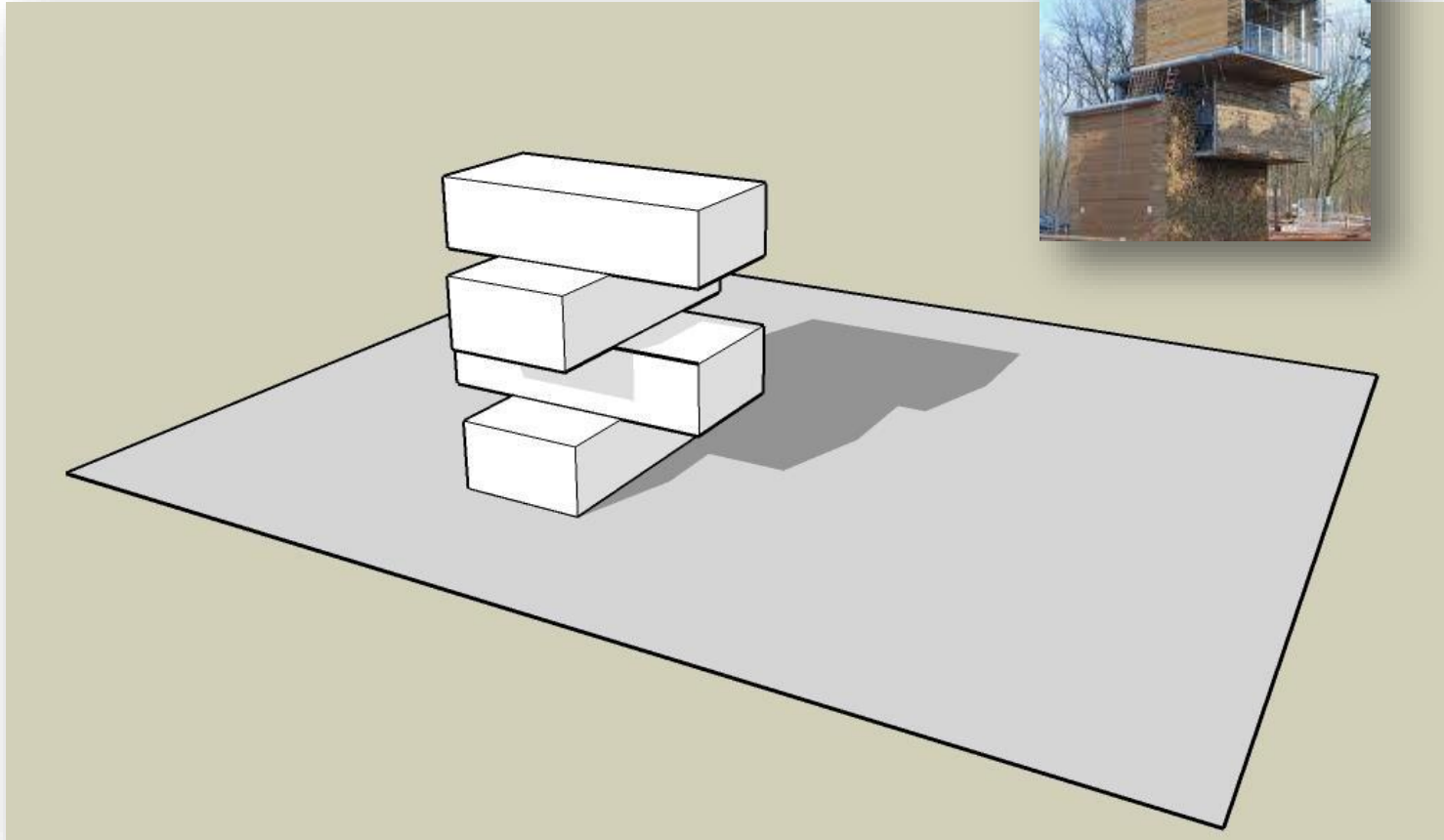
object-e architecture

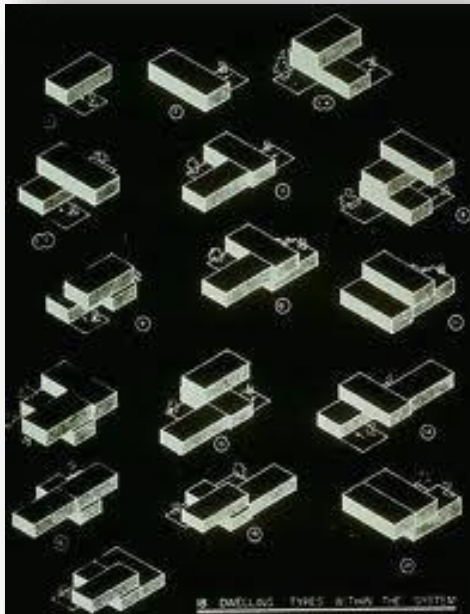




DIMKO 24
DINAMARCA

2. SUPERPOSICIÓN

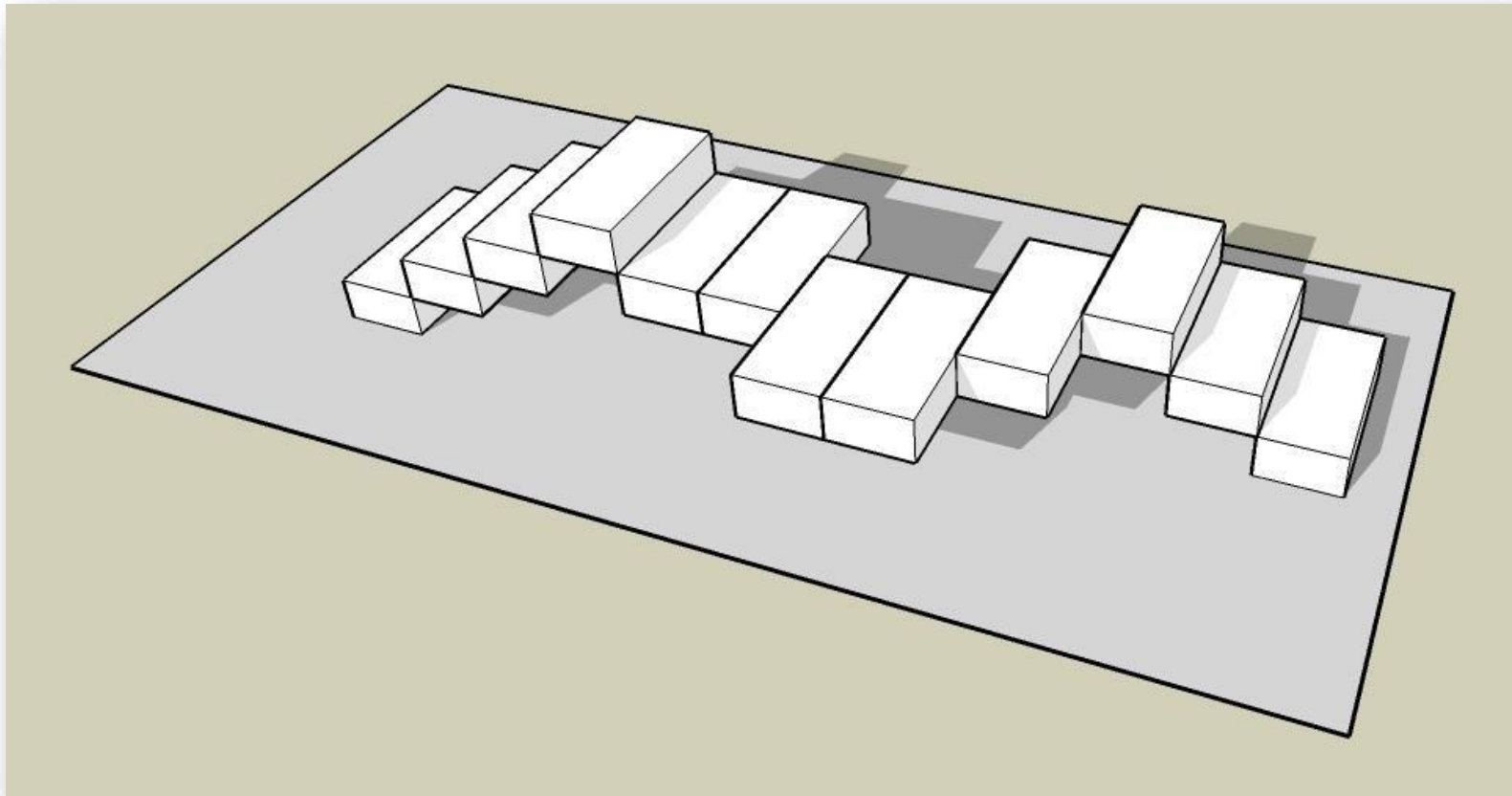




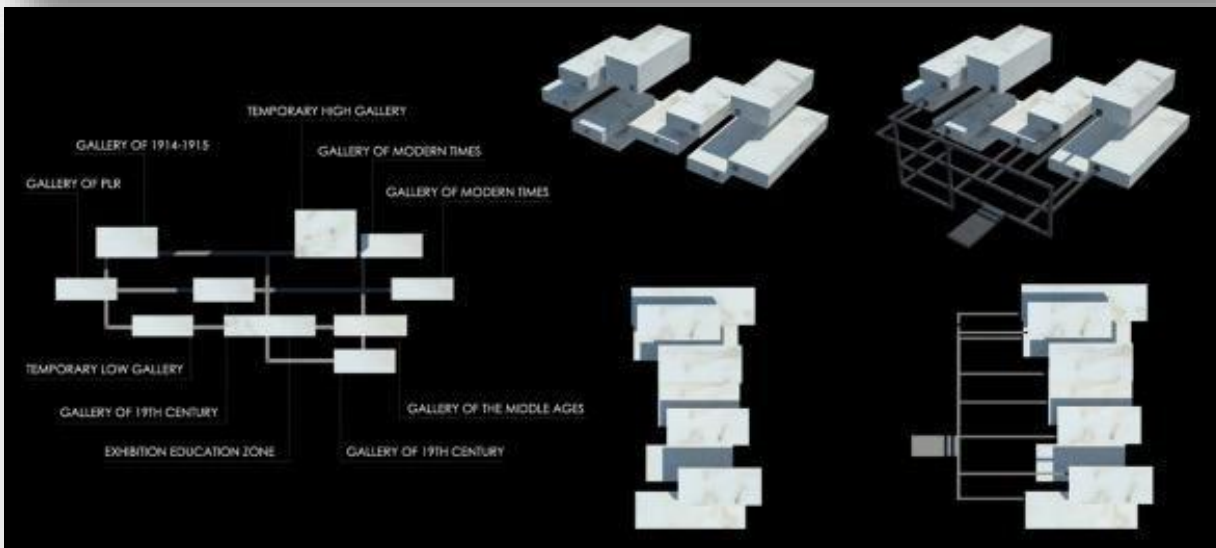
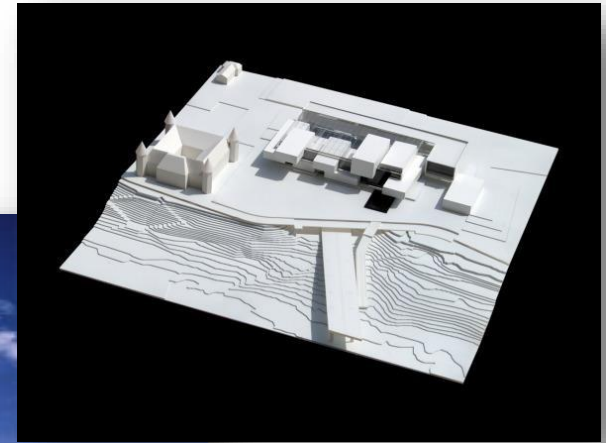
BOX-MANUEL MARQUEZ
POTOSÍ
BOLIVIA



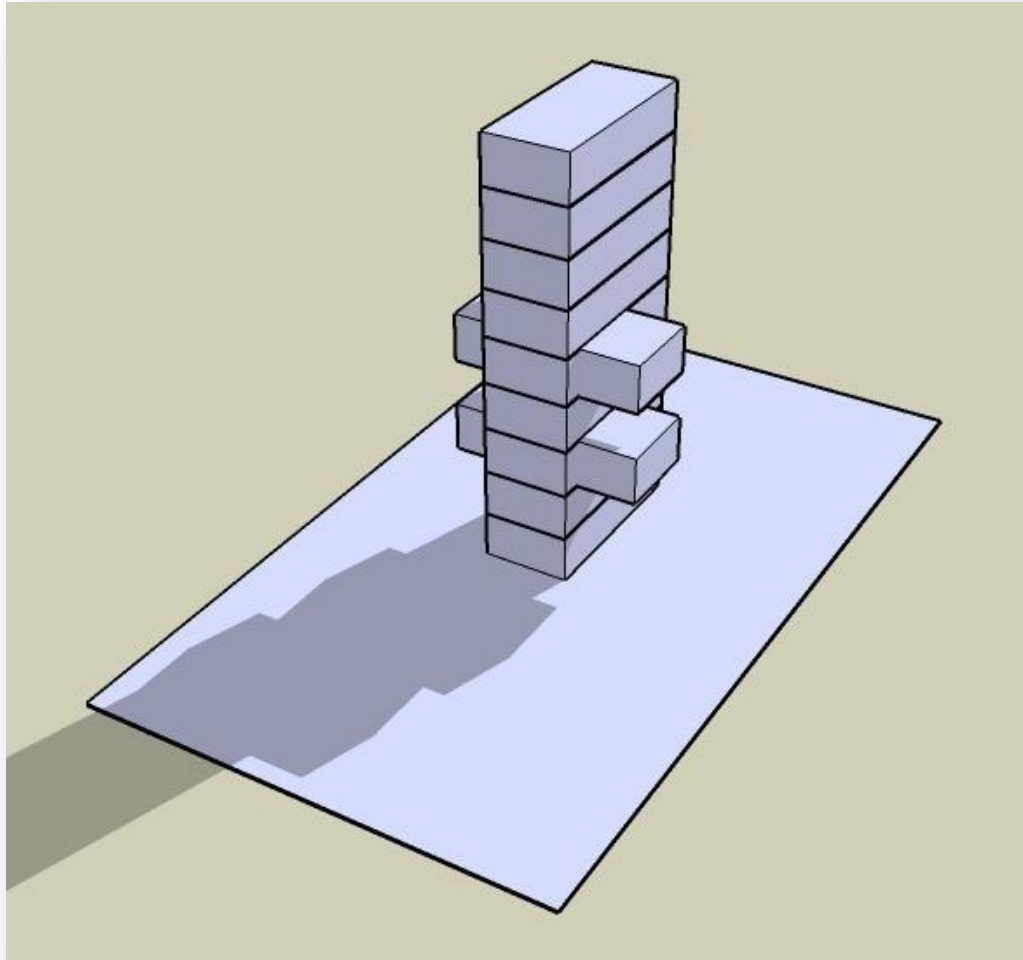
2. YUXTAPOSICIÓN



3. Yuxtaposición

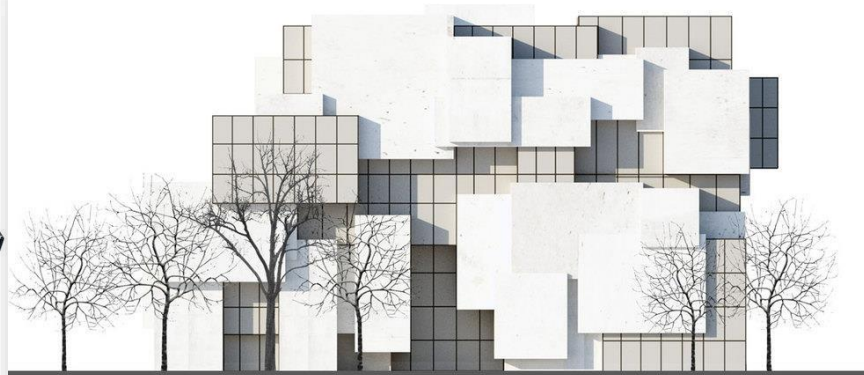
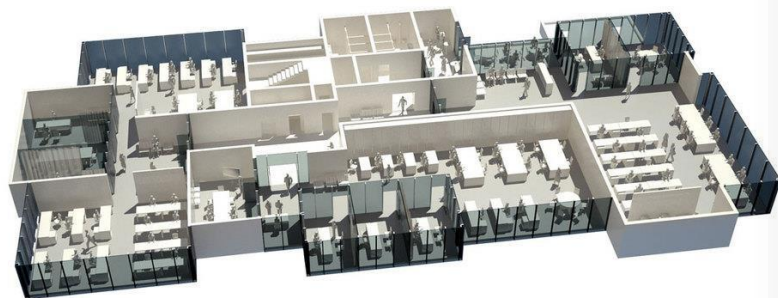
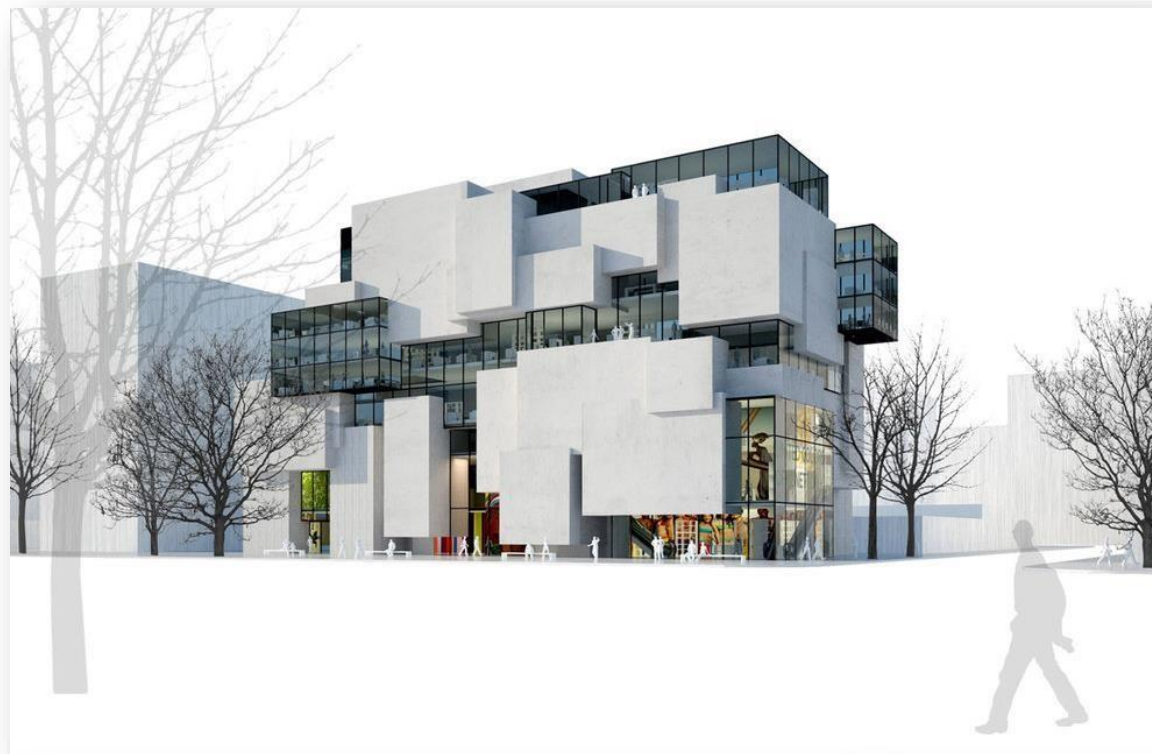


4. FUSIÓN





BERNETTON TEHERAN



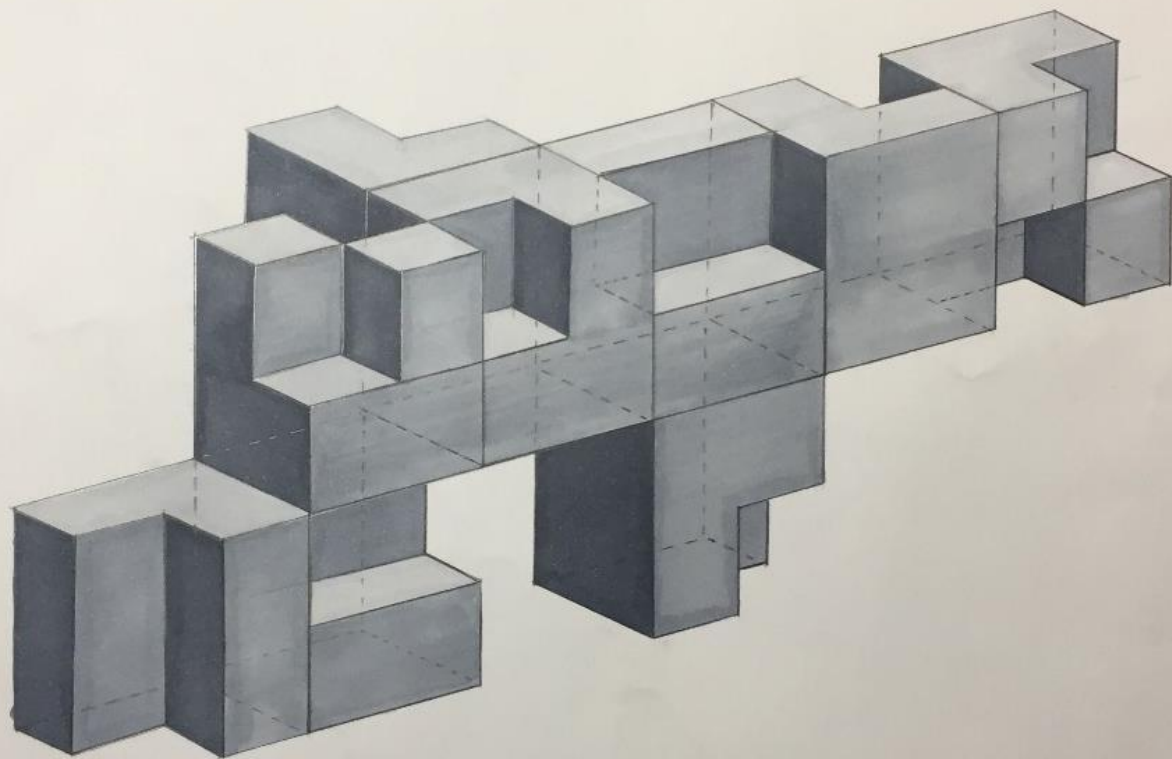
4. FUSIÓN



POLEDROS PLATÓNICOS



....la arquitectura esta a un paso!!



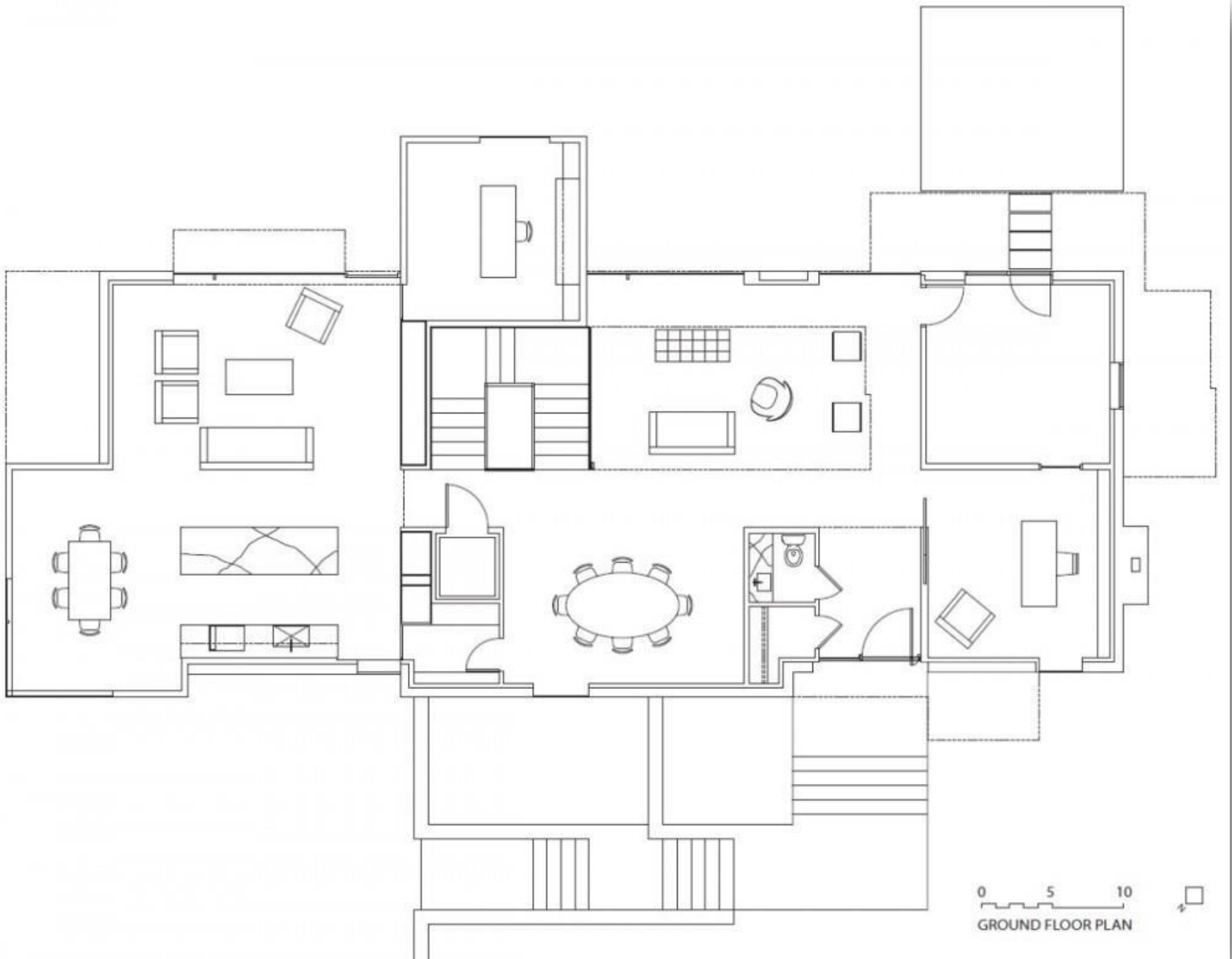
CASA NACI - BETHESDA - MARYLAND - ARQ . DAVID JAMESON





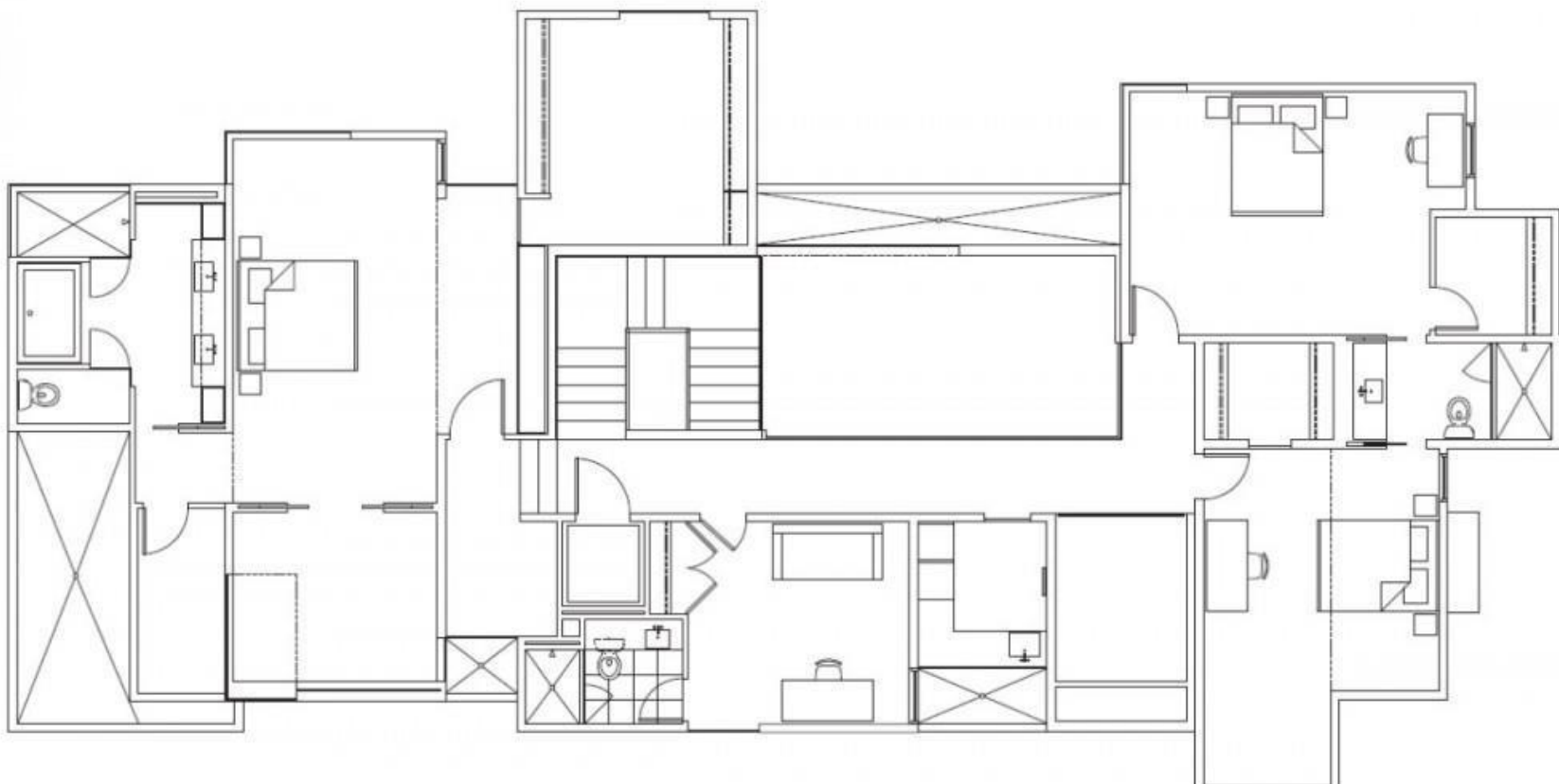






0 5 10
GROUND FLOOR PLAN





0 5 10
UPPER FLOOR PLAN



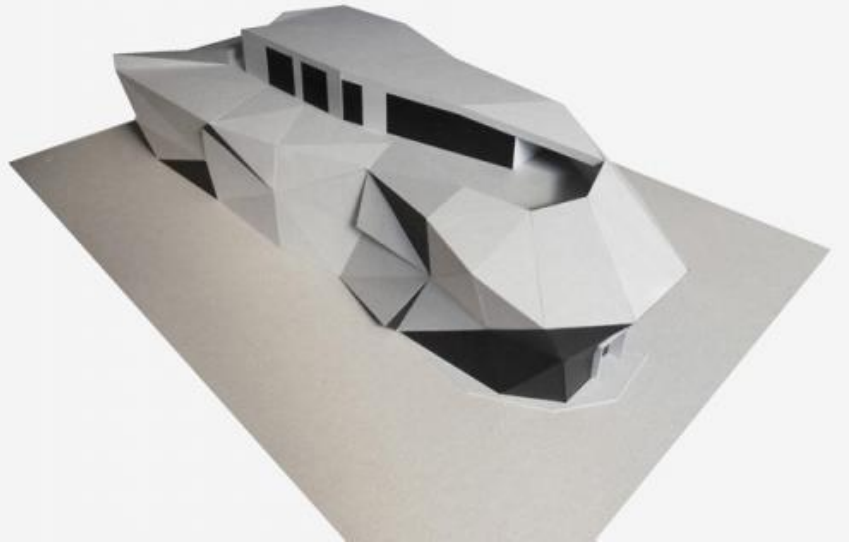
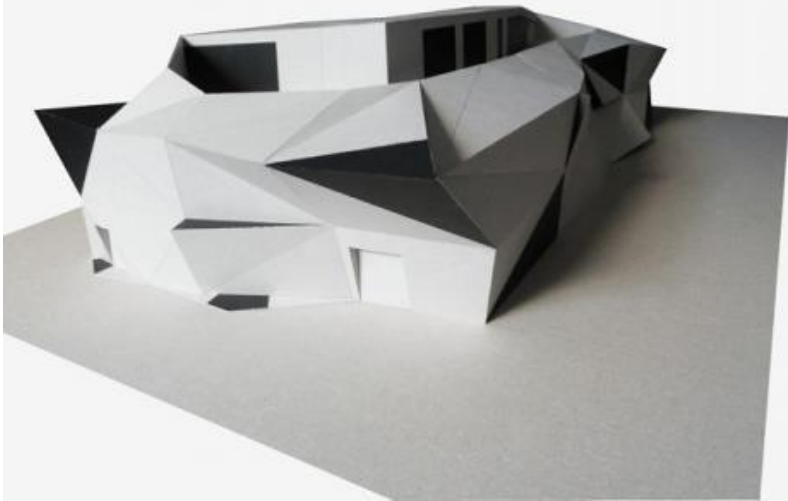




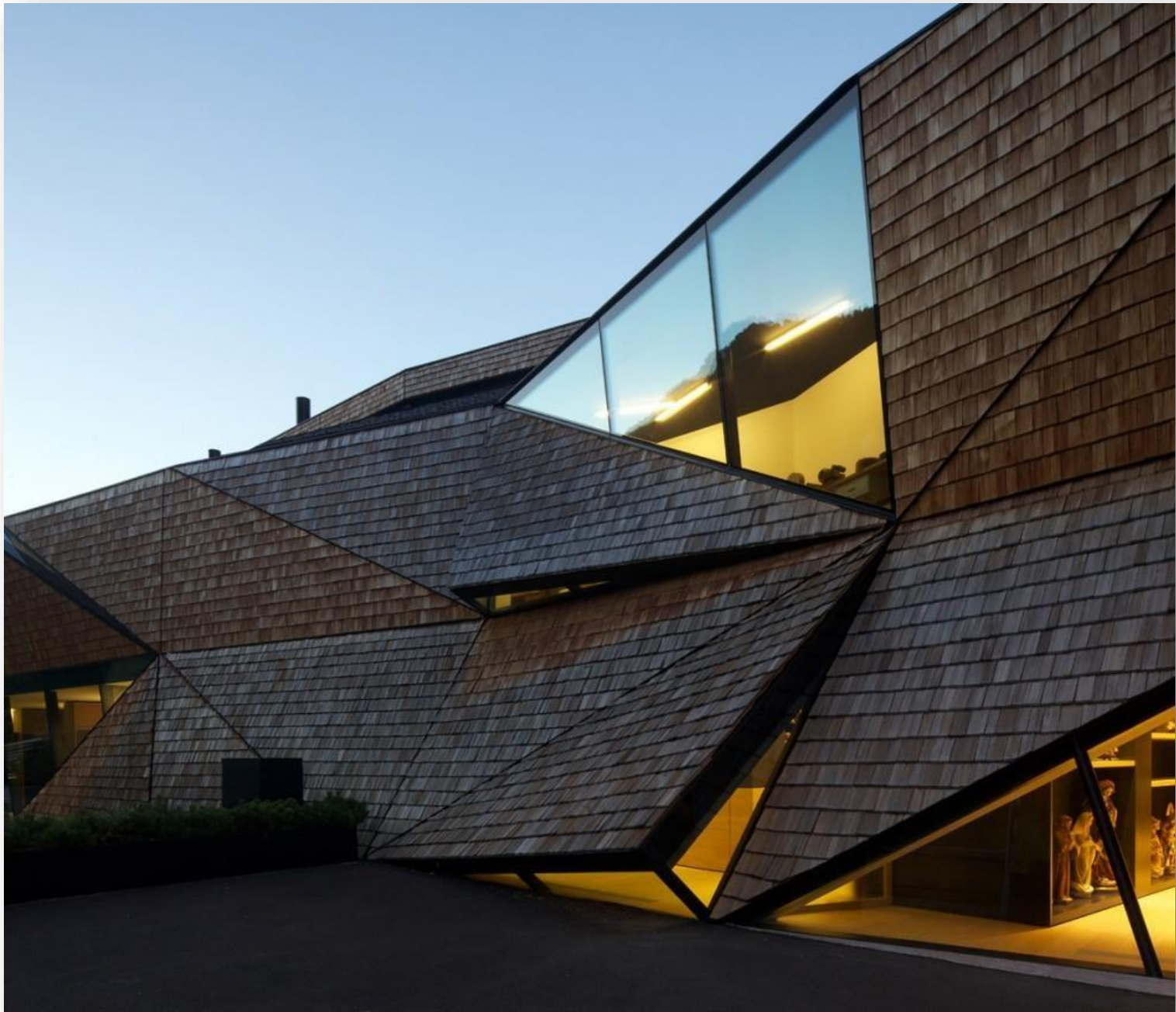
PERATHONER, OFICINAS PONTIVESTALIA





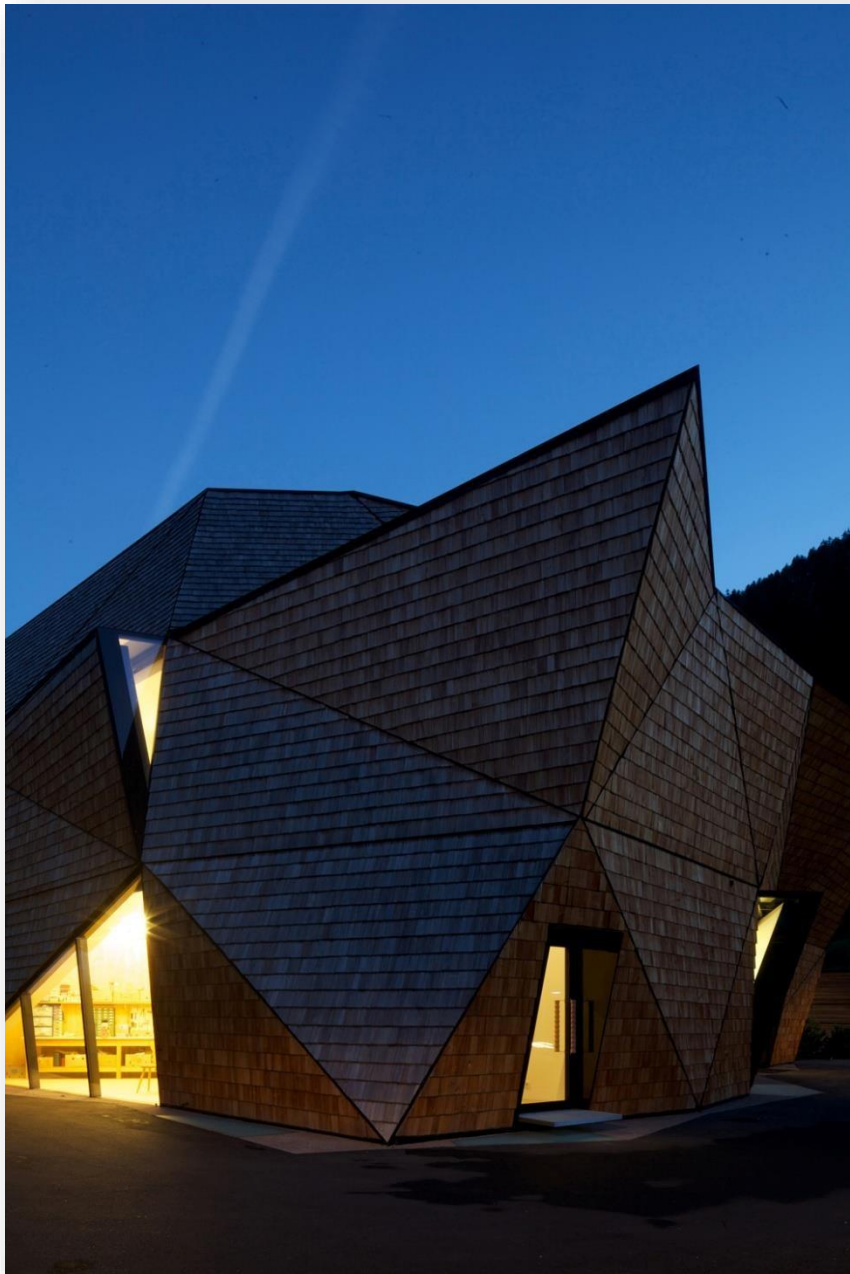












Docentes: Prof. Titular Arq. JUAN CARLOS ALÉ
Prof. JTP Arq. SILVIA SEGOVIA

ARQUITECTURA 1 TALLER DE INTEGRACION PROYECTUAL

Carrera de Arquitectura

2023

Facultad de Ingeniería - UN Cuyo