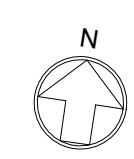
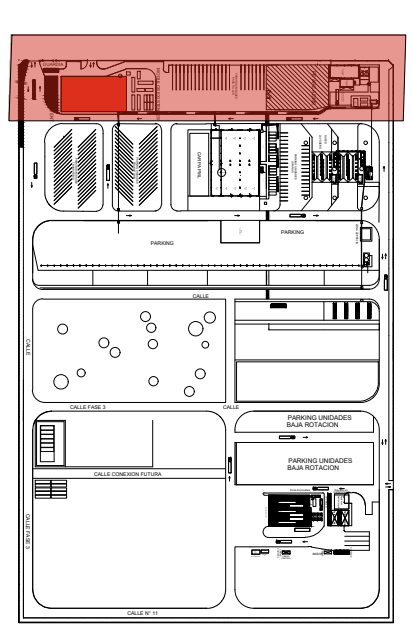


**CROQUIS DE UBICACIÓN:**



ABE

The diagram illustrates the layout of a mobile shelving system with cable trays. Key components and dimensions include:

- Dimensions:**
  - Total width: 9.45m
  - Segment widths: 0.44m, 2.27m, 0.89m, 2.27m, 0.87m, 2.27m, 0.44m, 2.01m.
  - Vertical spacing: 1.4m between shelves, 1.4m between sections, 1.4m between rows.
  - Right-side vertical dimension: 1.2m.
- Labels:**
  - Bandeja portacable (Cable tray)
  - STRING 03- INV 03
  - GCB 03

Technical drawing of the solar parking structure, showing side and perspective views with dimensions and labels.

**Labels:**

- Estructura Soporte Módulos
- Unidades exteriores a/c
- Unidades exteriores a/c
- Viga de modulos de oficinas
- Panel Fotovoltaico
- Parking Solar






**Dimensions:**

- Height of the structure: 4.21
- Horizontal distance from the base to the first support: 0.78
- Horizontal distance between the first and second supports: 2
- Horizontal distance between the second and third supports: 2.43
- Horizontal distance between the third and fourth supports: 3.09

Technical drawing of the 'CASA' system, showing a side elevation and a perspective view of a car shelter. The side elevation shows a long, low structure with a flat roof supported by multiple posts. The perspective view shows a car parked under the shelter, with dimensions indicating a height of 2.75m and a depth of 3.95m. A north arrow is also present.

## REFERENCIAS:

SÍMBOLOS:

-  CÁMARA CONDUCCIÓN CC  
 CÁMARA CONDUCCIÓN CA  
 CÁMARAS EXISTENTES  
 CAÑEROS EXISTENTES  
 CAÑEROS CONDUCCIÓN CA  
 CAÑEROS CONDUCCIÓN CC

00	PARA REVISIÓN					10/07/2023	ASE	ROC	
	REVISION DESCRIPCION					FECHA	REVISIO	APPROBADO	
LOGO CLIENTE									
LISTA DE REVISIONES									
CLIENTE:									
						BASE AREÑO PROVINCIA DE NEUQUEN			
CERA						<b>SISTEMA FOTOVOLTAICO</b>  BASE AREÑO			
PLANO:									
Lay Out- Sistema Fotovoltaico									
ETAPA PROY. PC									
NIVEL DESAR. 100									
ESCALA						PLANO N° CPMO-26-5042-ICF-AÑE-XX-LA-100-S3-00			
IDIFICADAS						REV. 00			