

MATERIALIDAD

LADRILLO VISTO 2

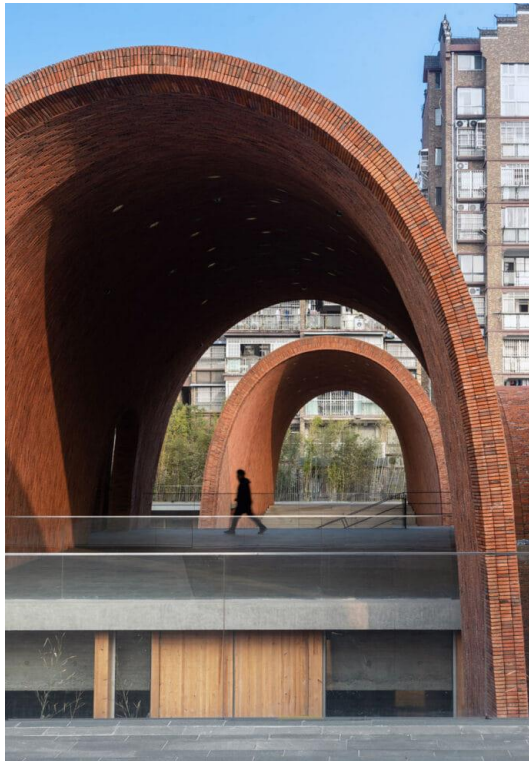
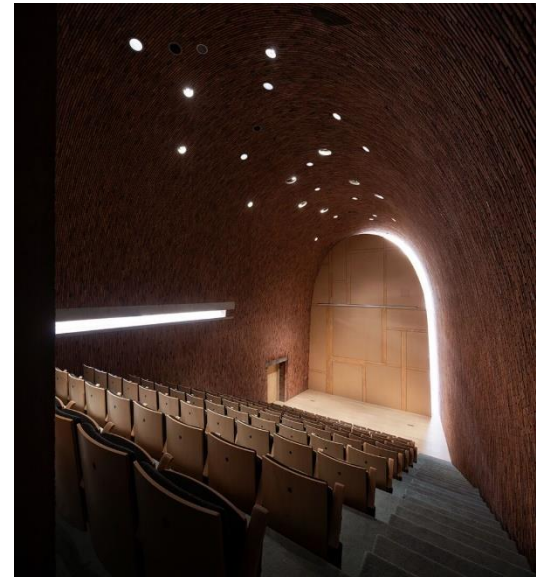
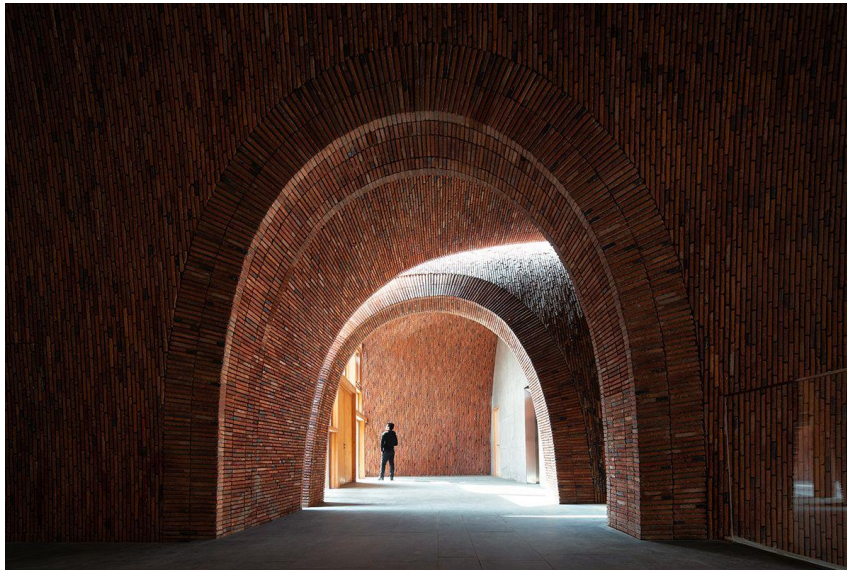


# MUSEO DEL HORNO IMPERIAL DE JINGDEZHEN

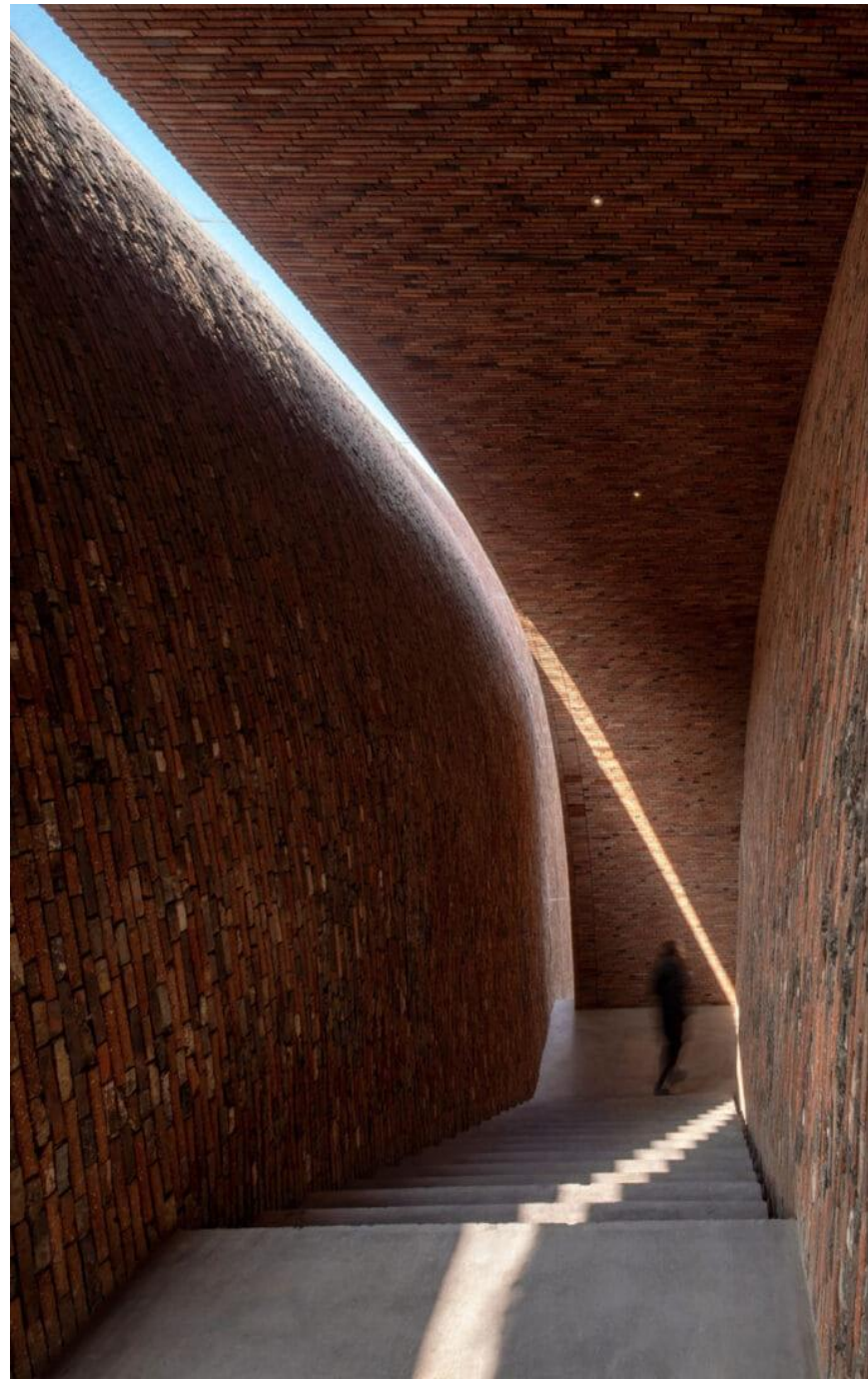
STUDIO ZHU-PEI



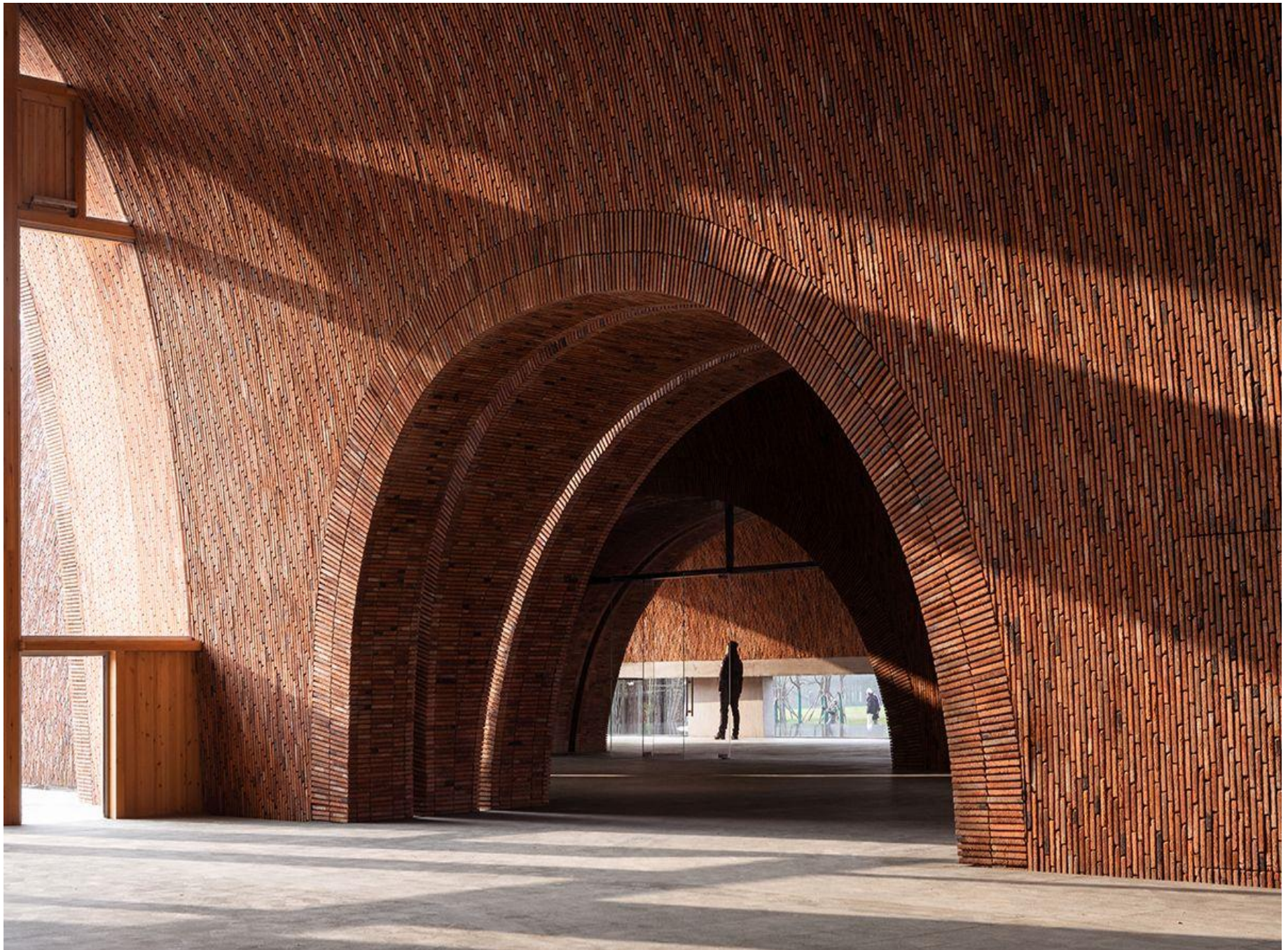




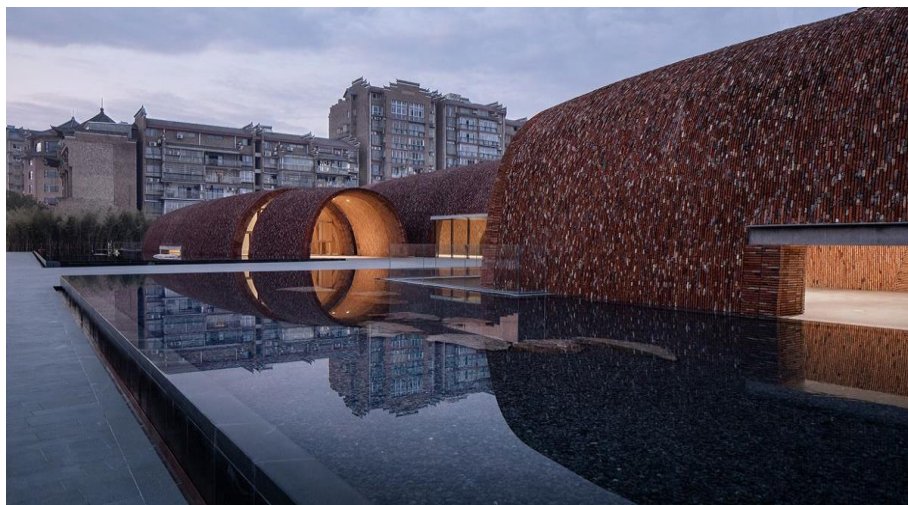
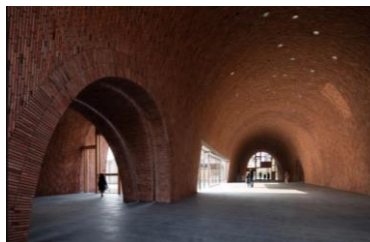
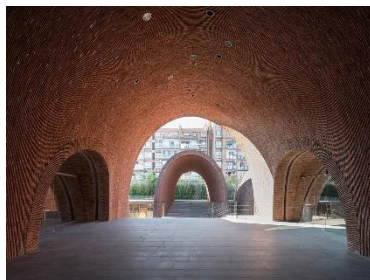
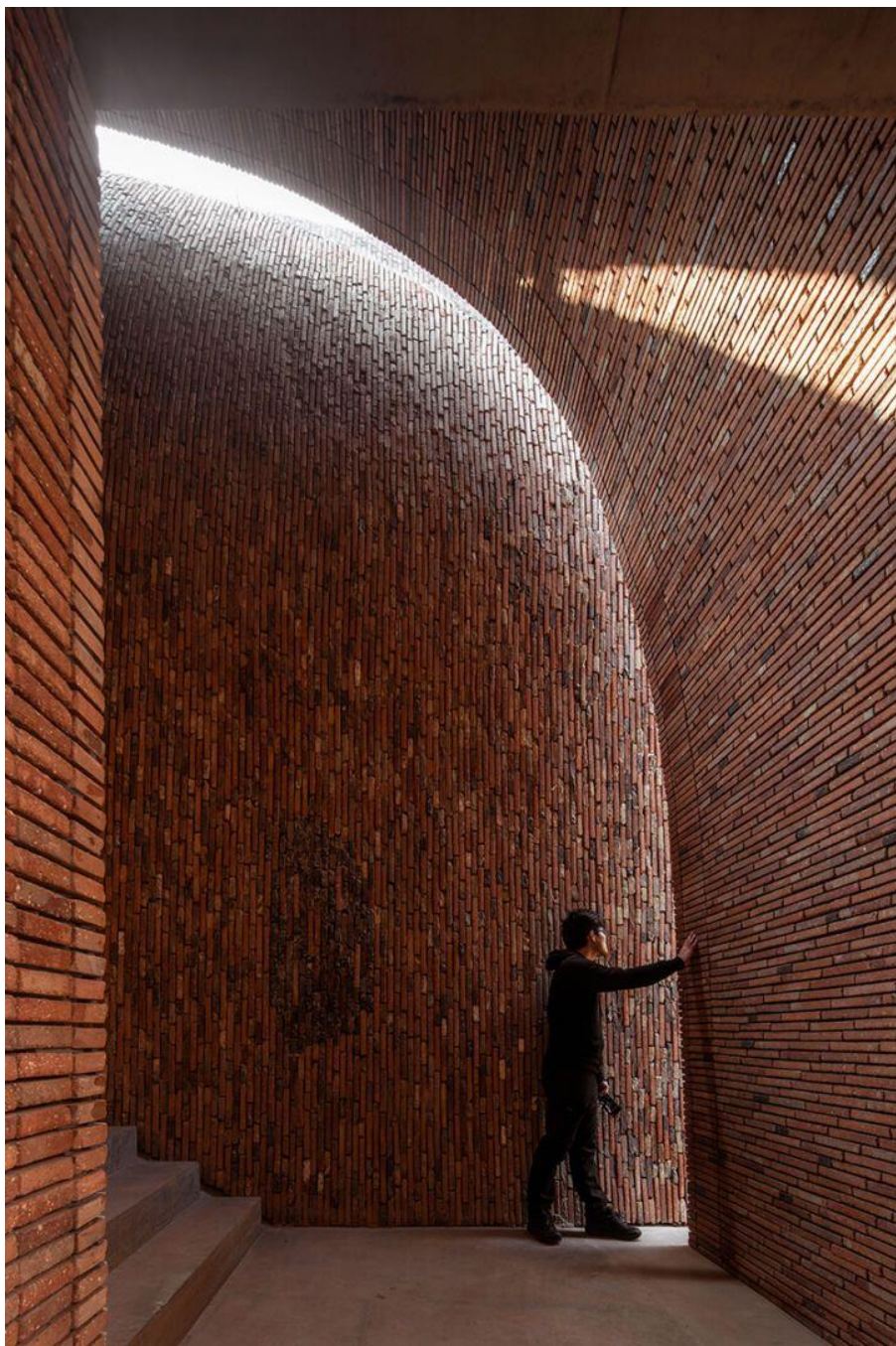




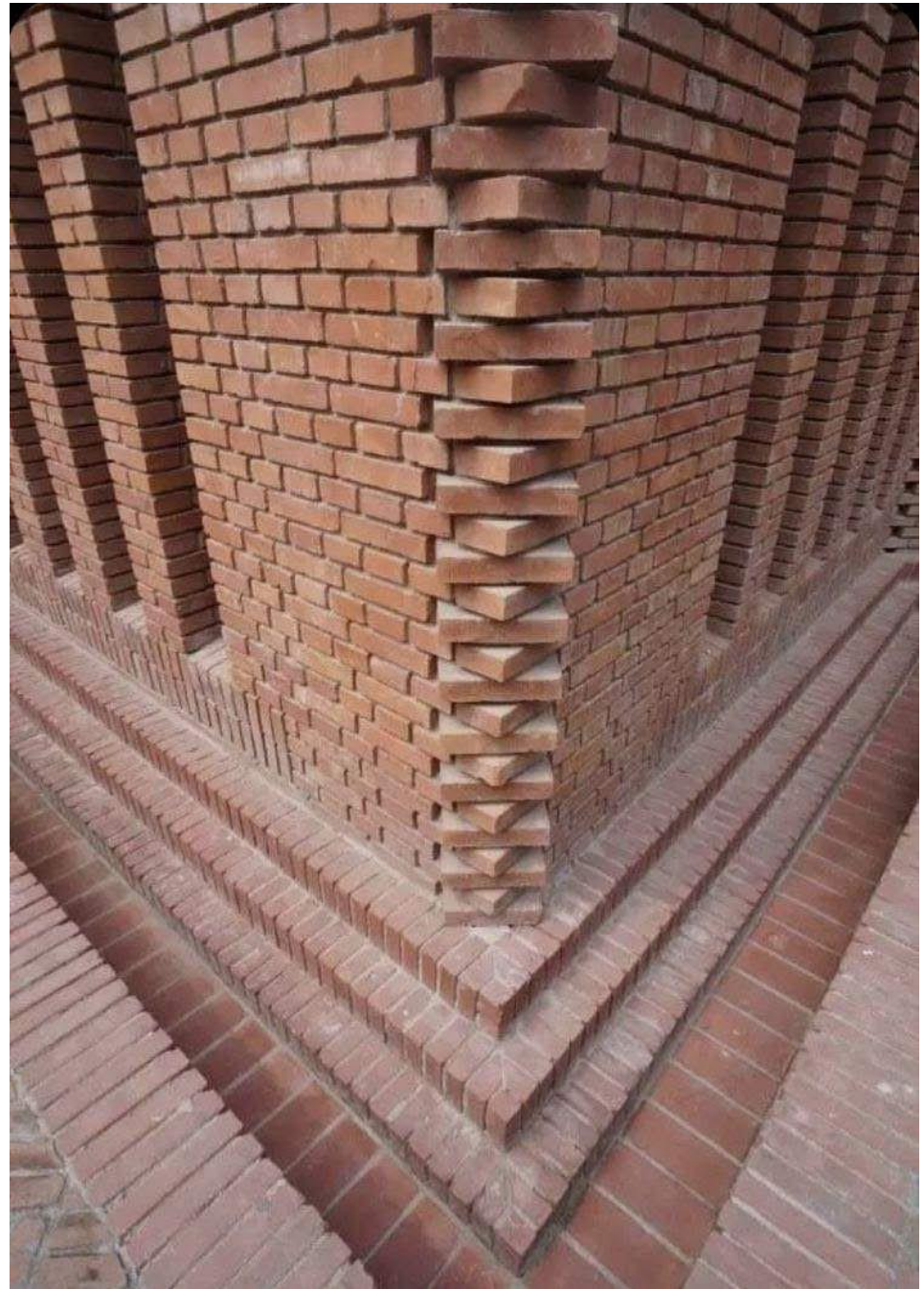




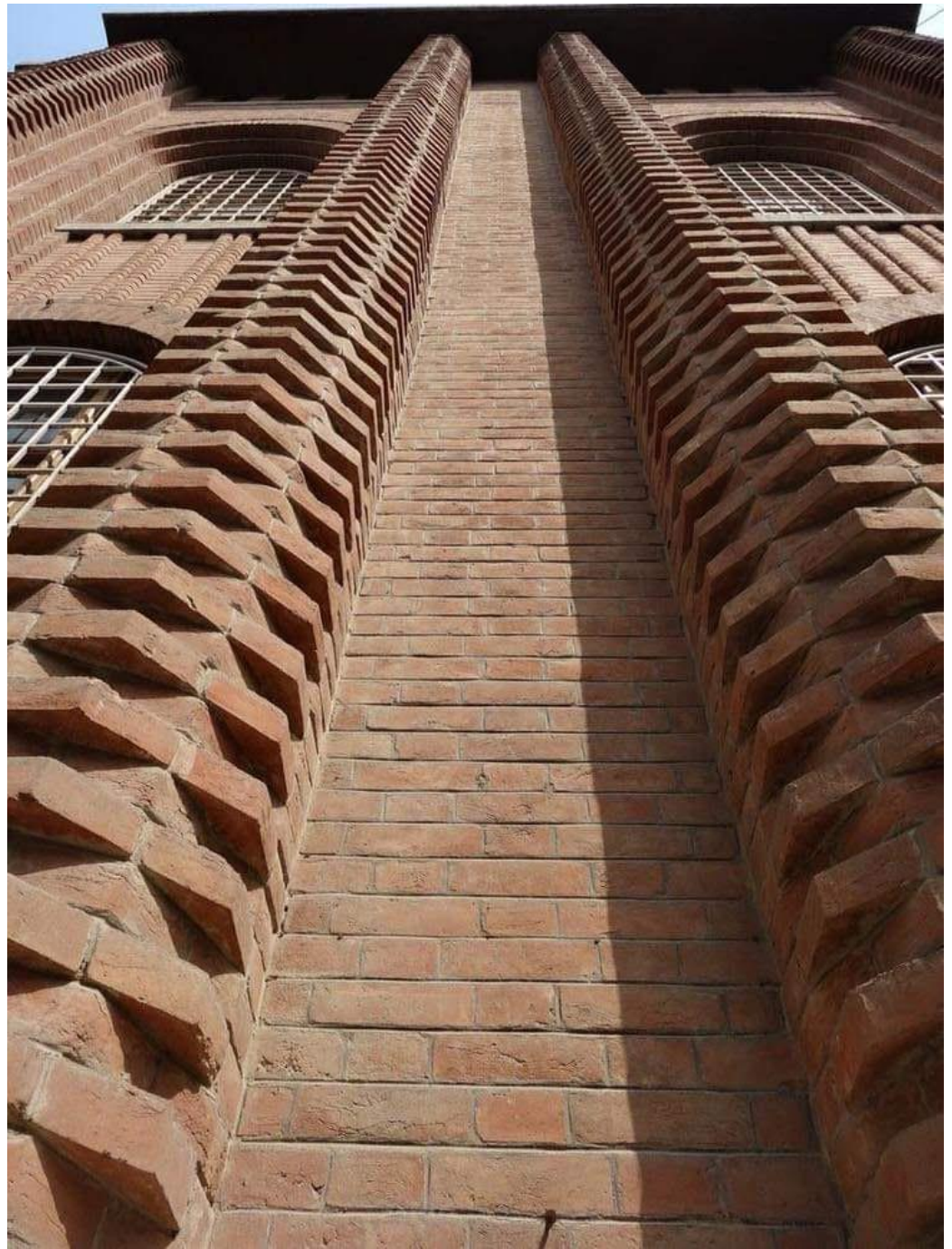




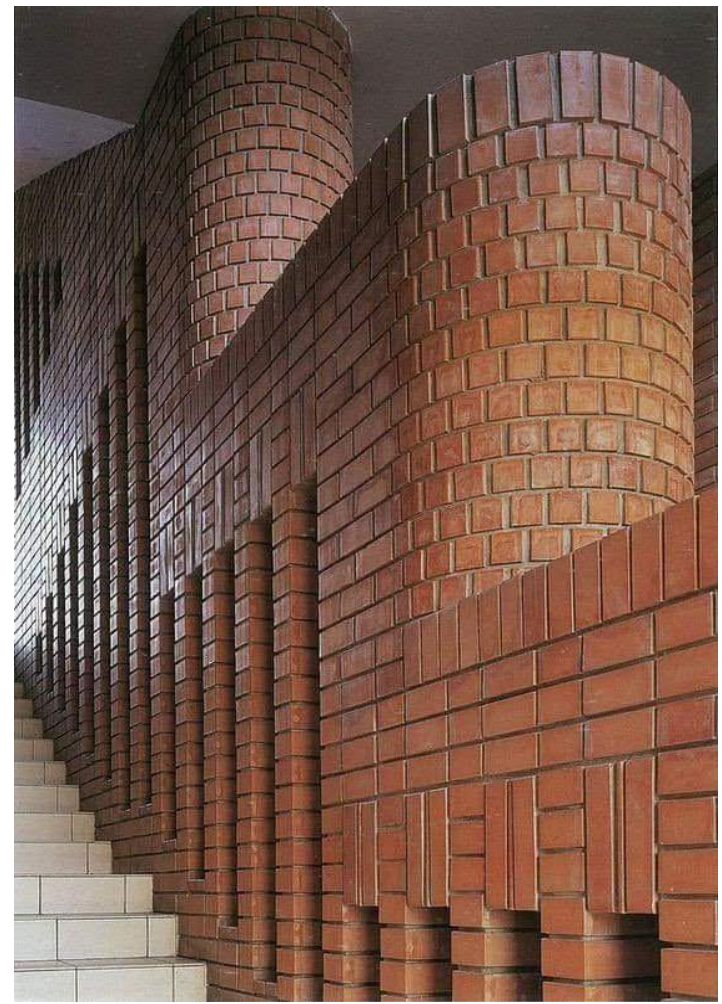
















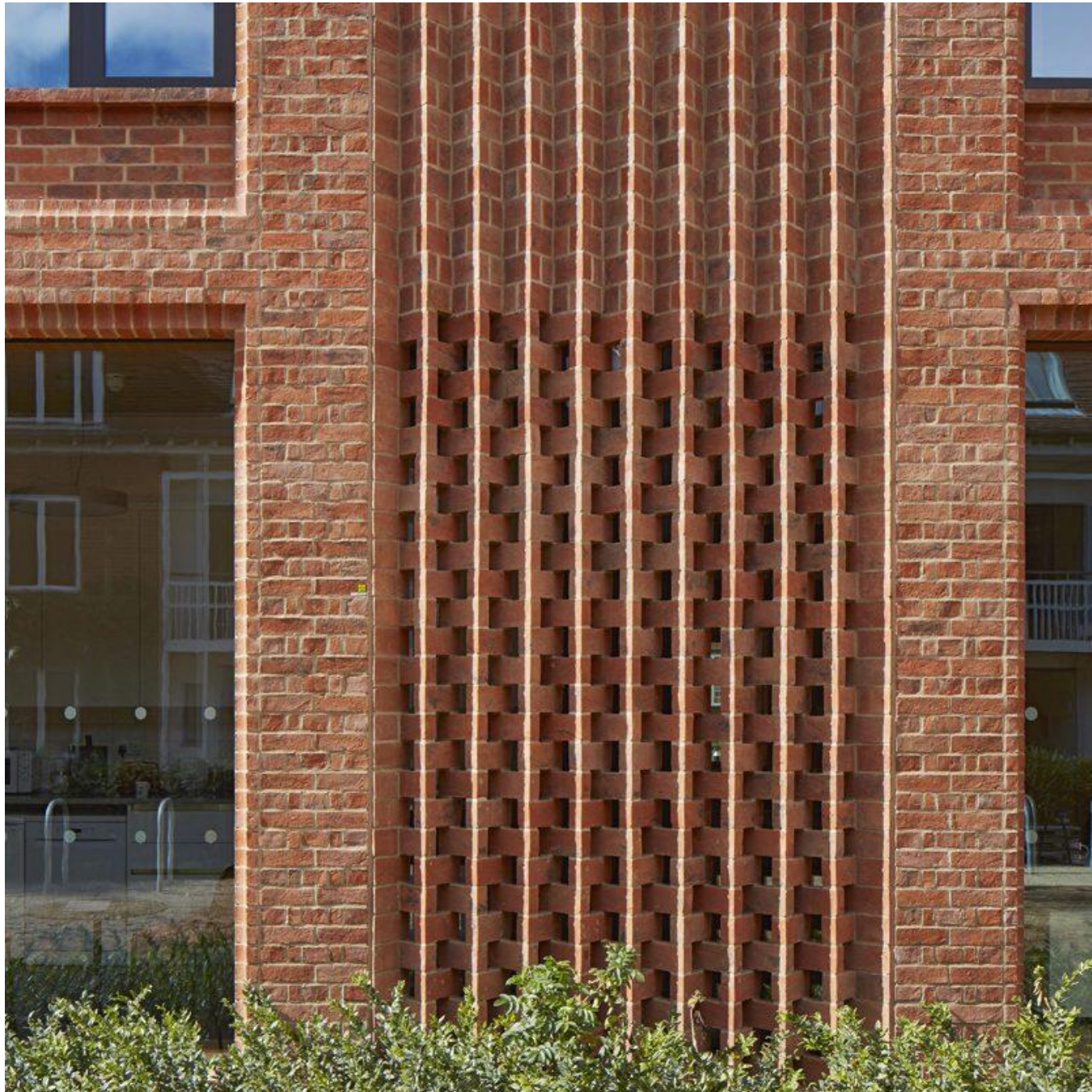
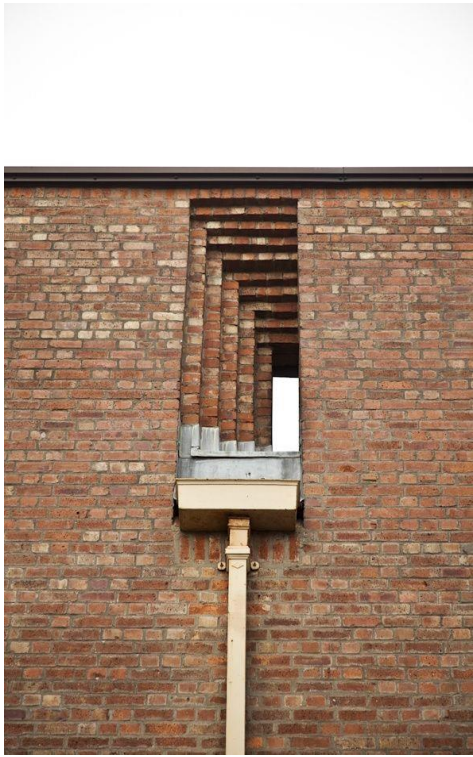












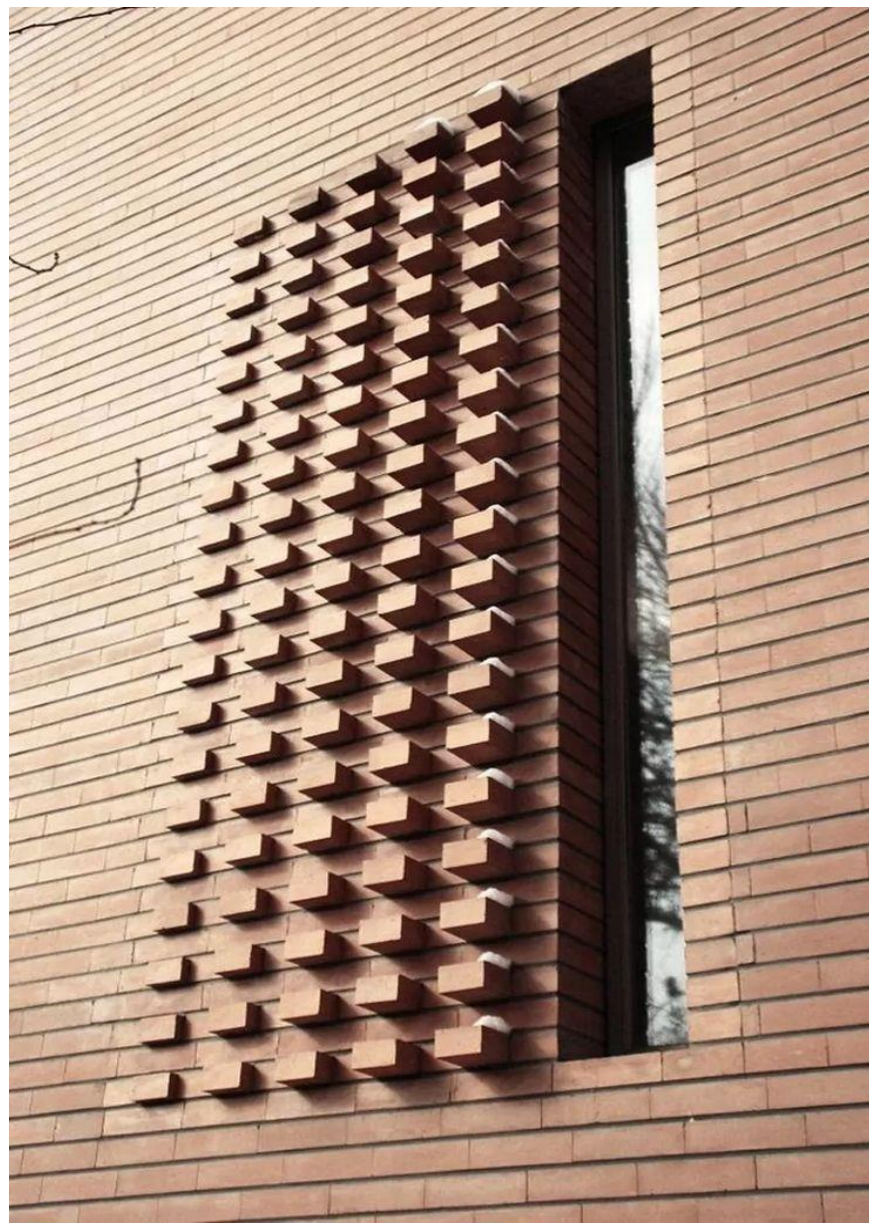
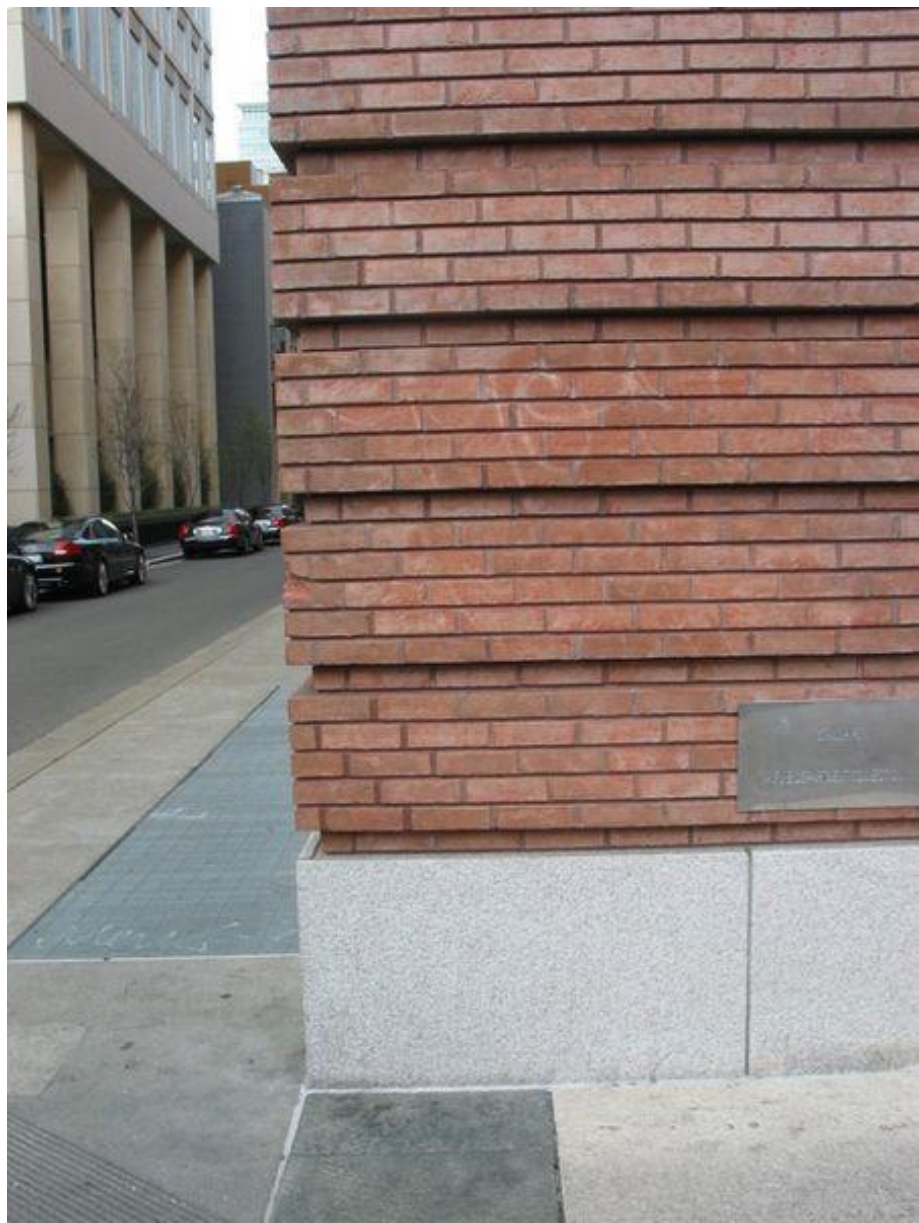




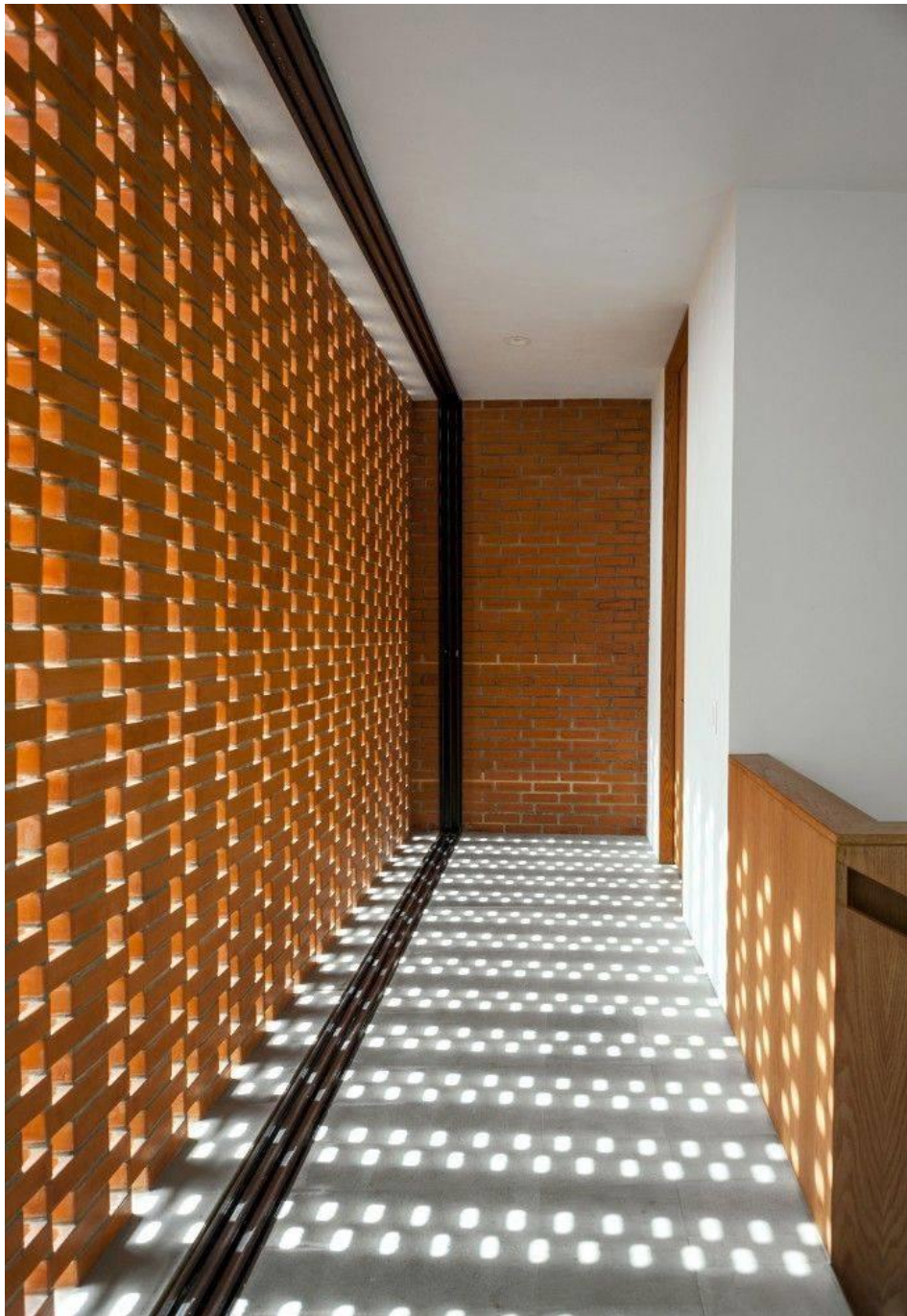
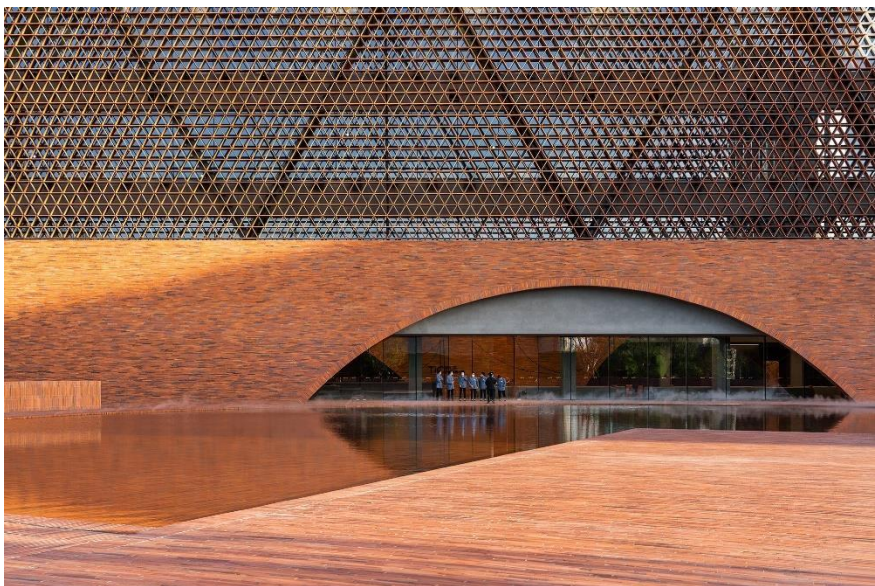








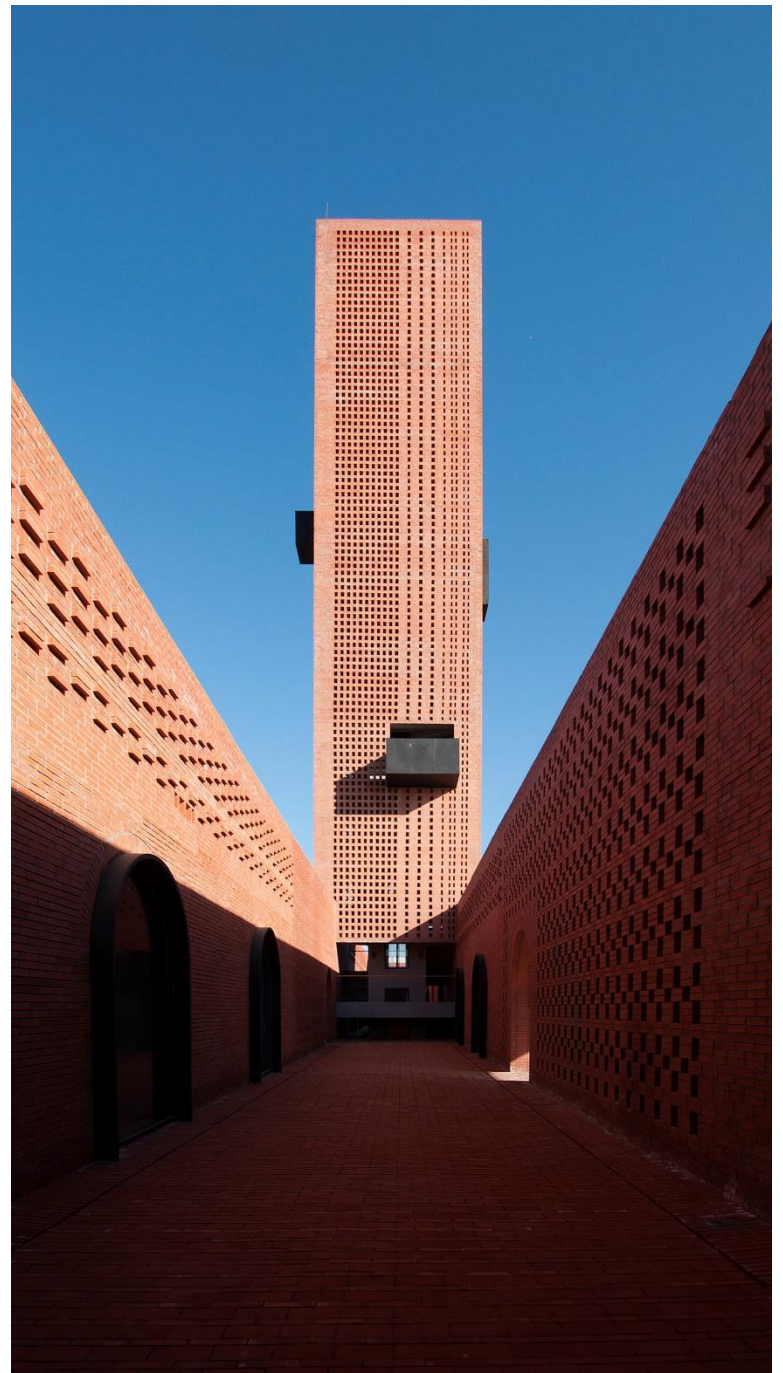
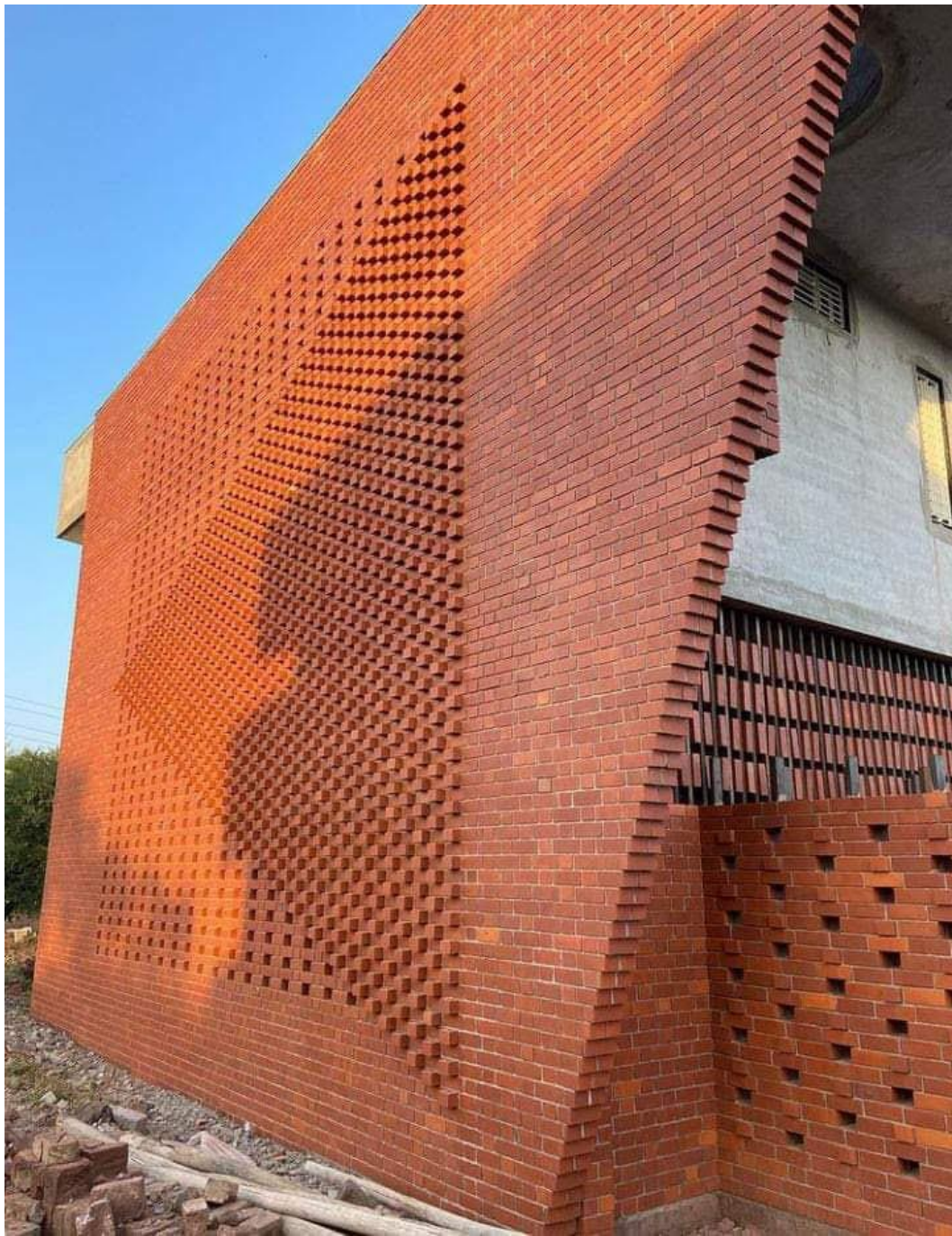








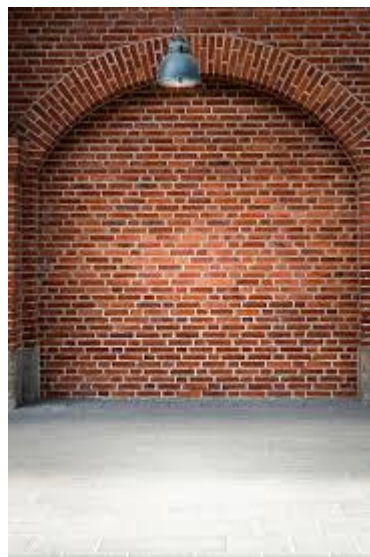








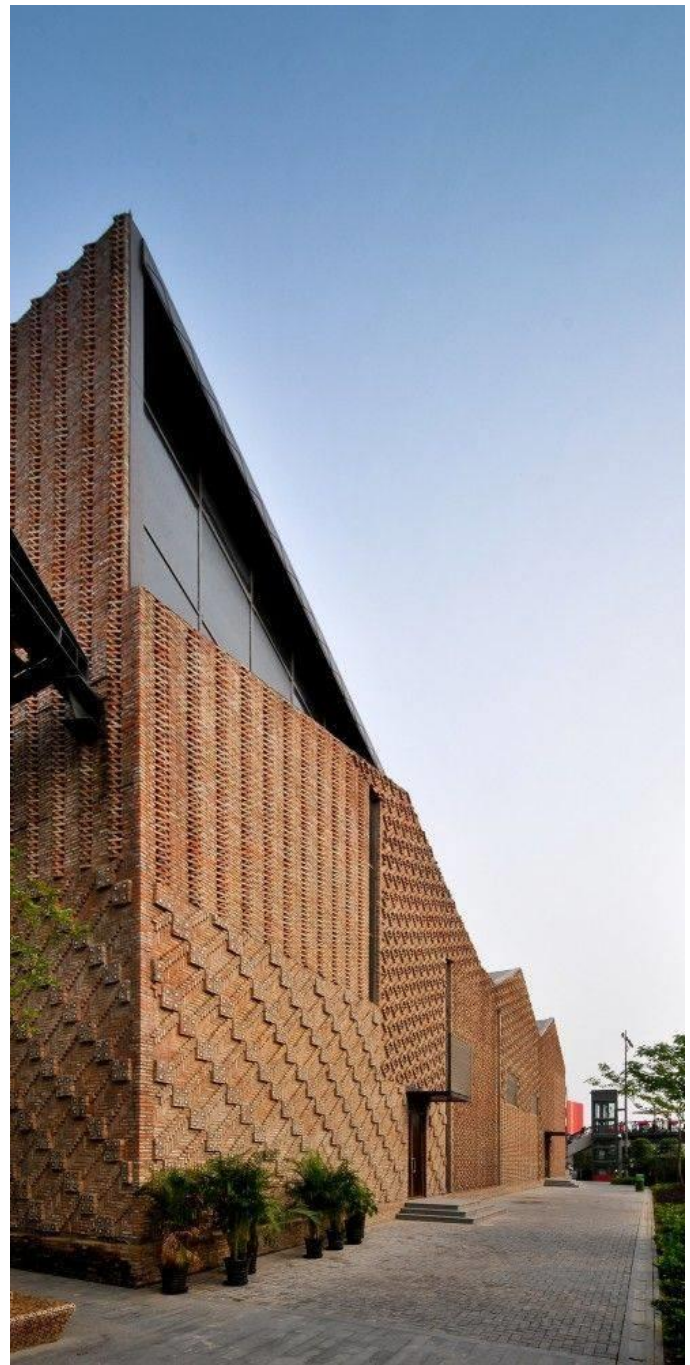
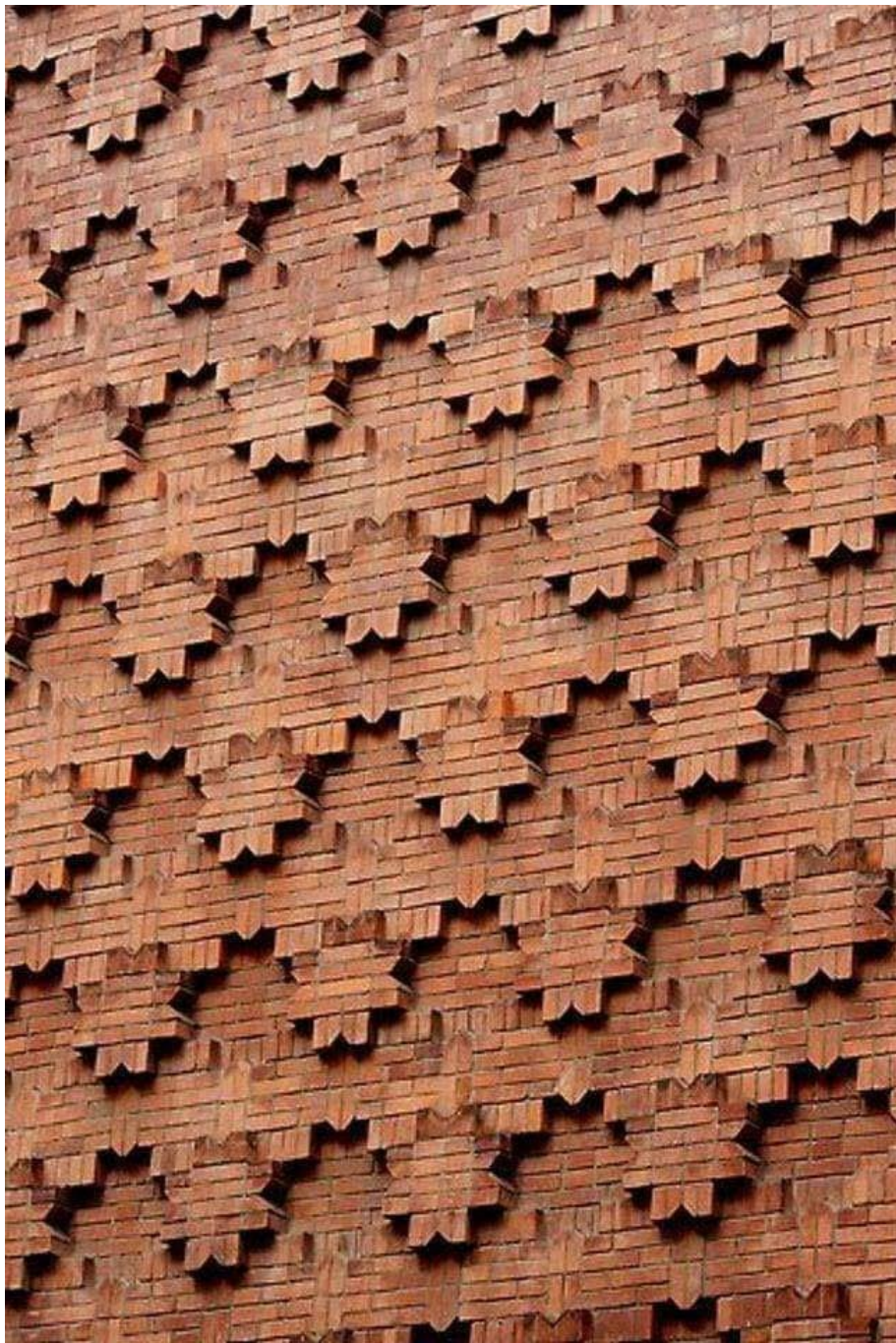




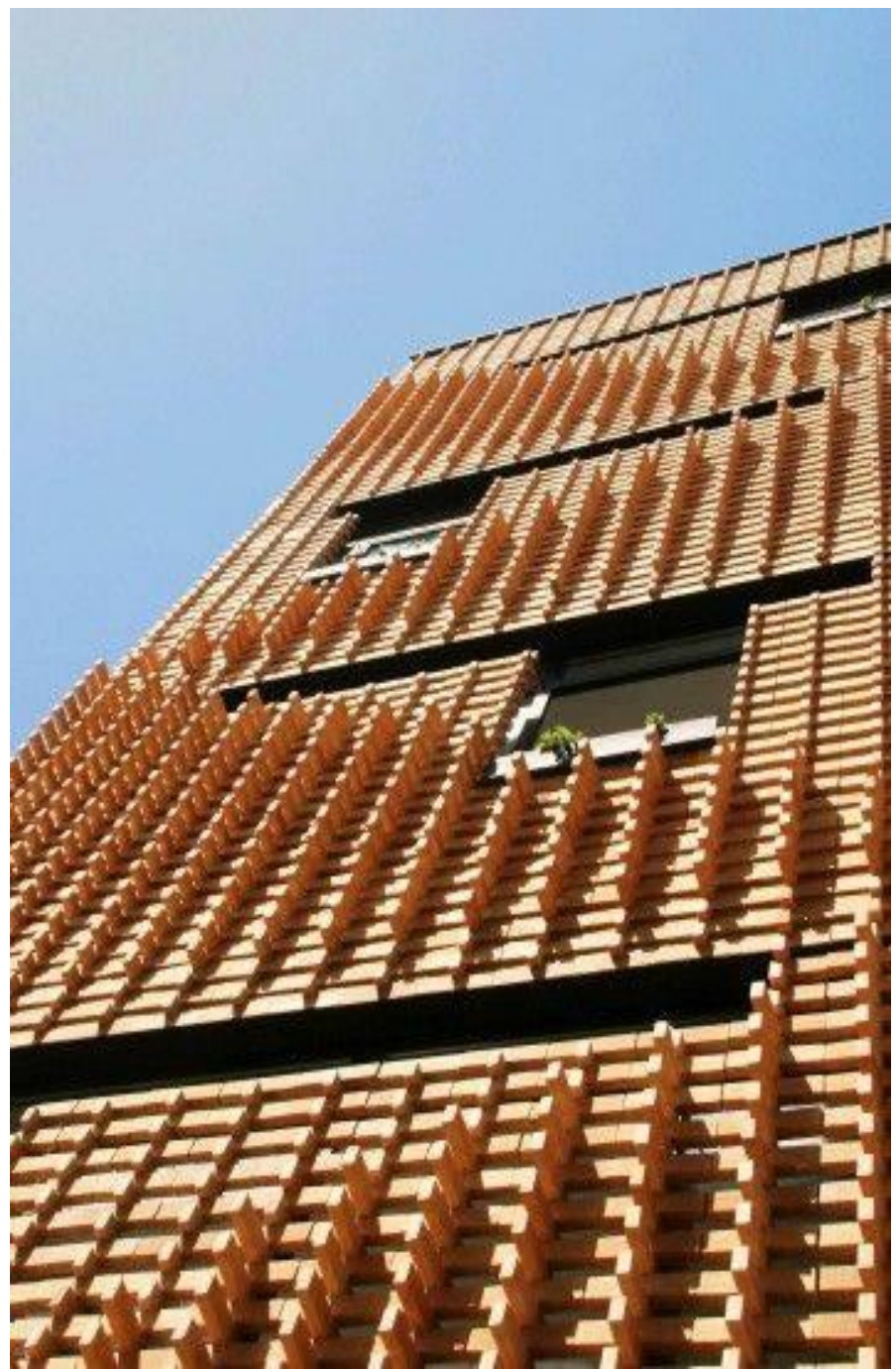








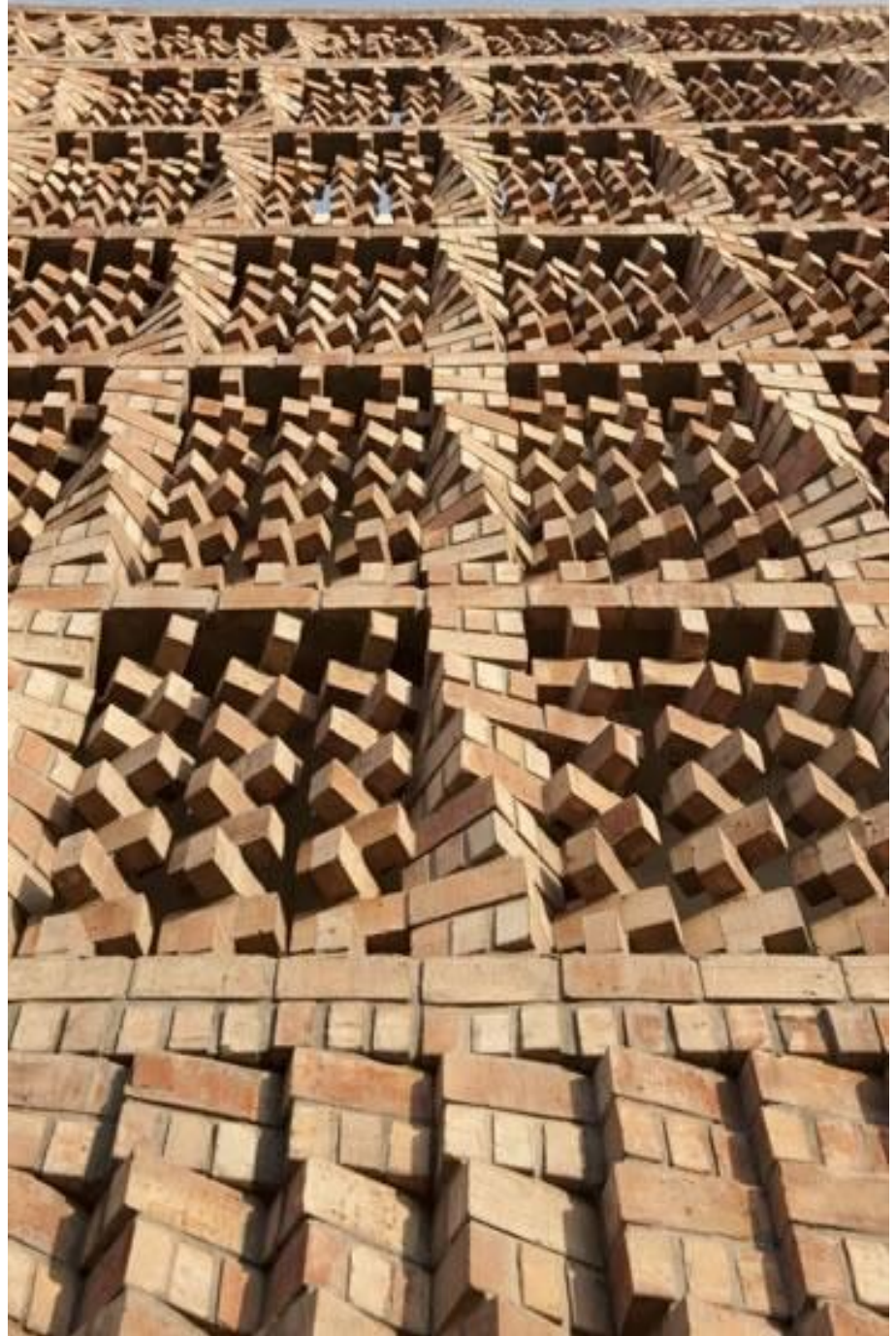












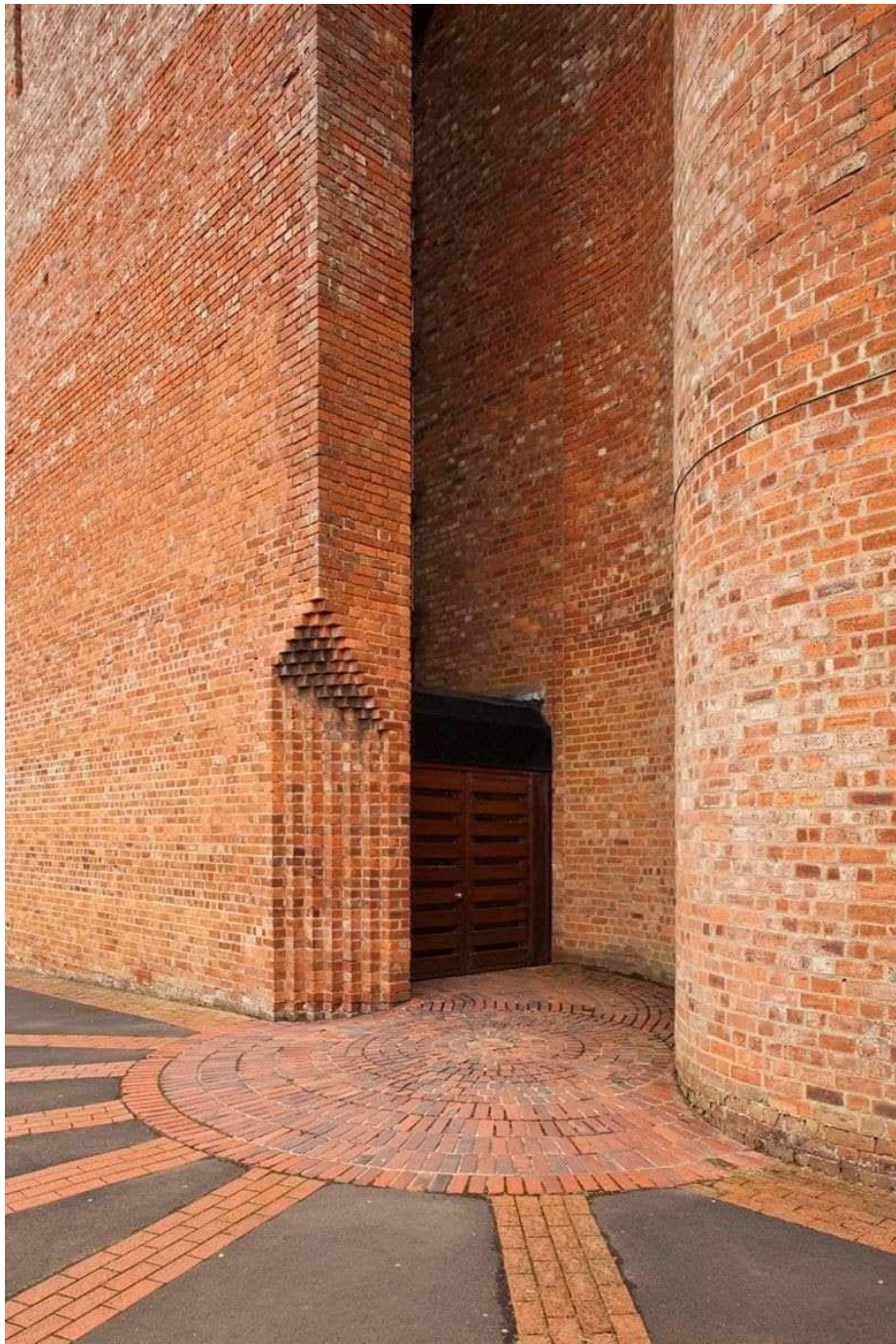




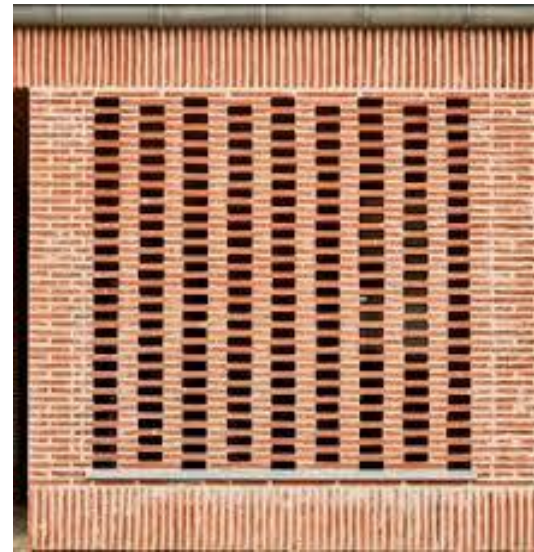
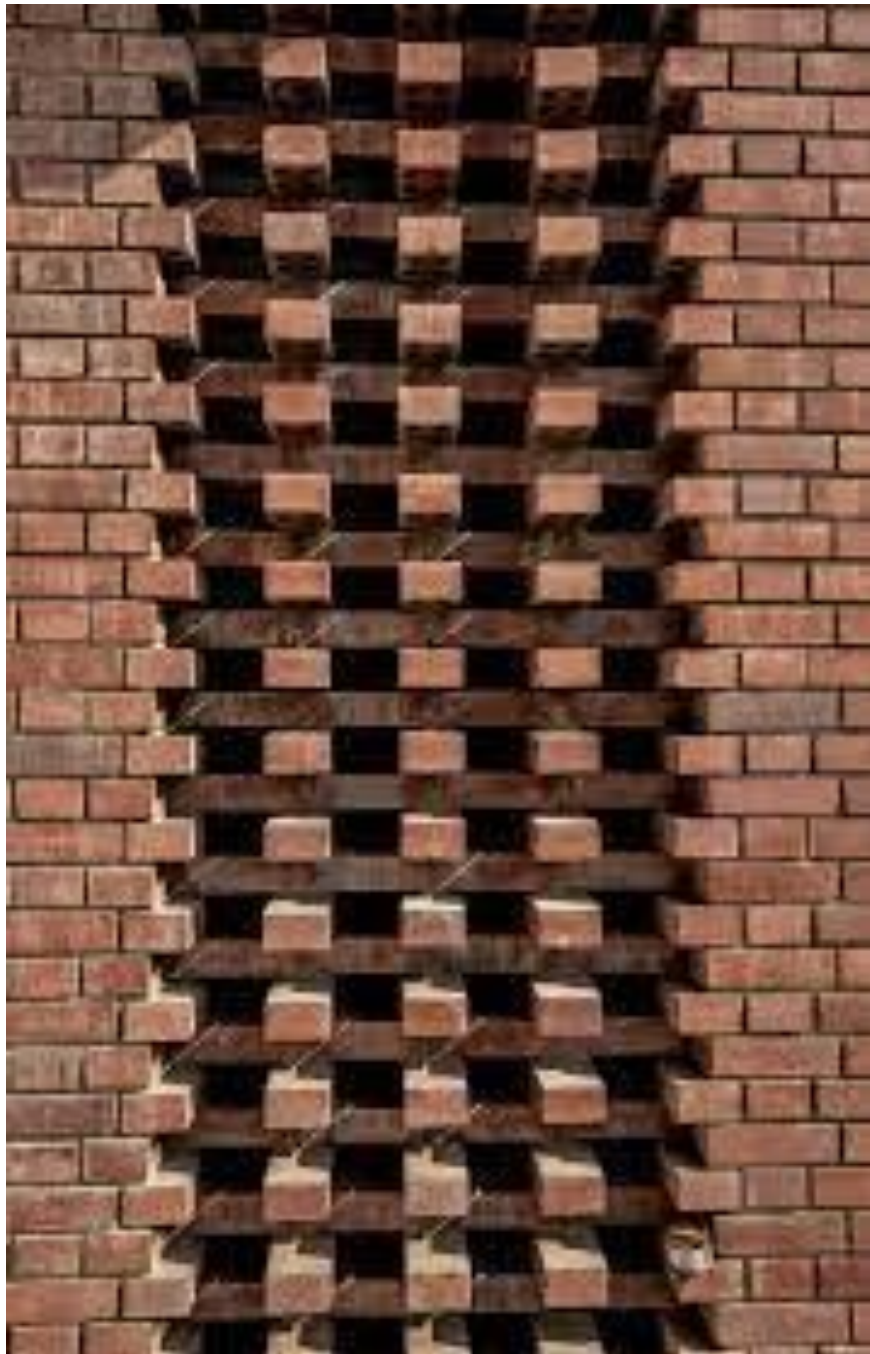
































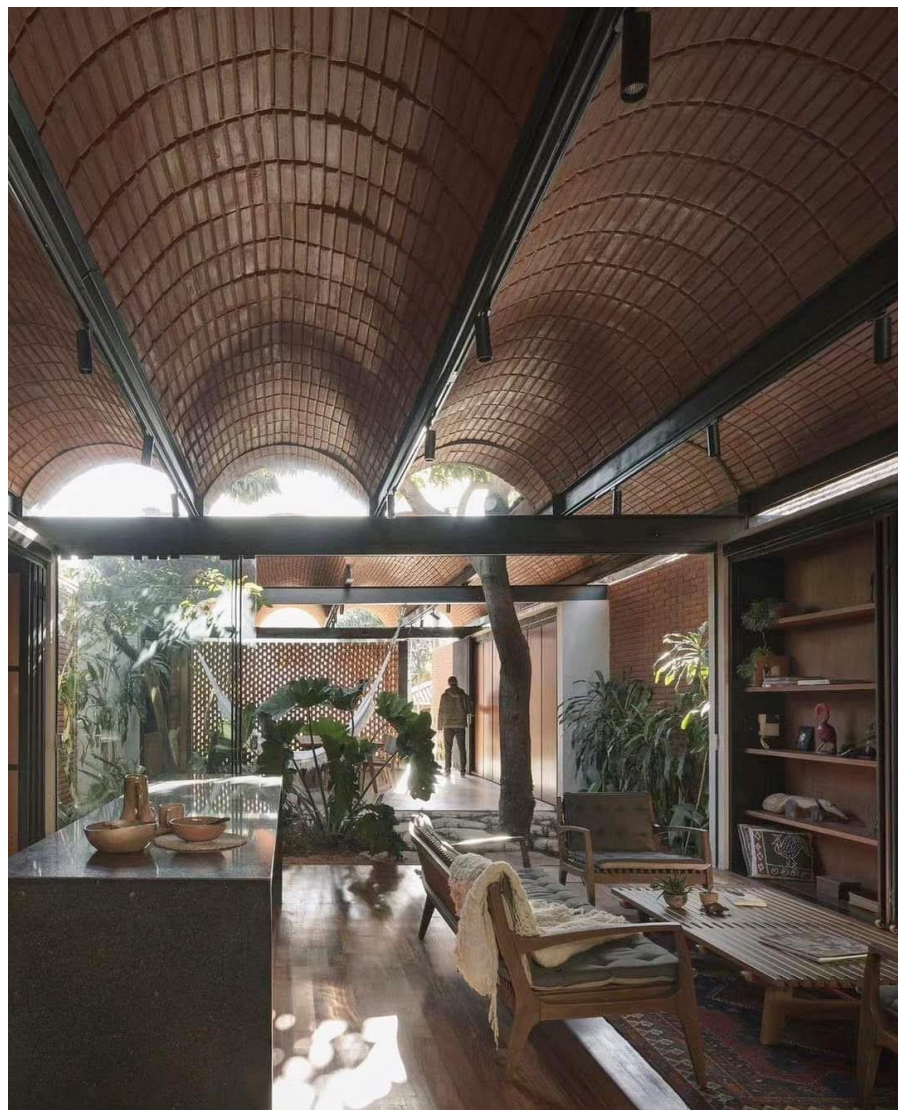










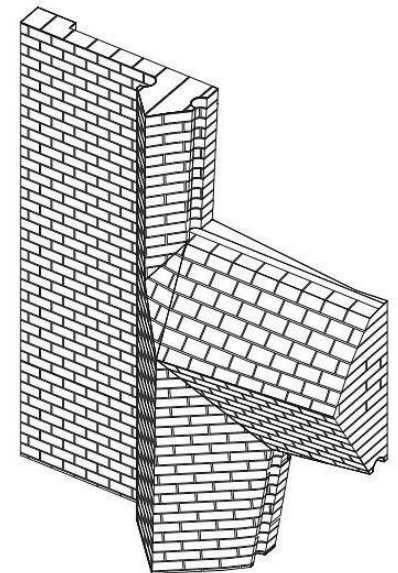




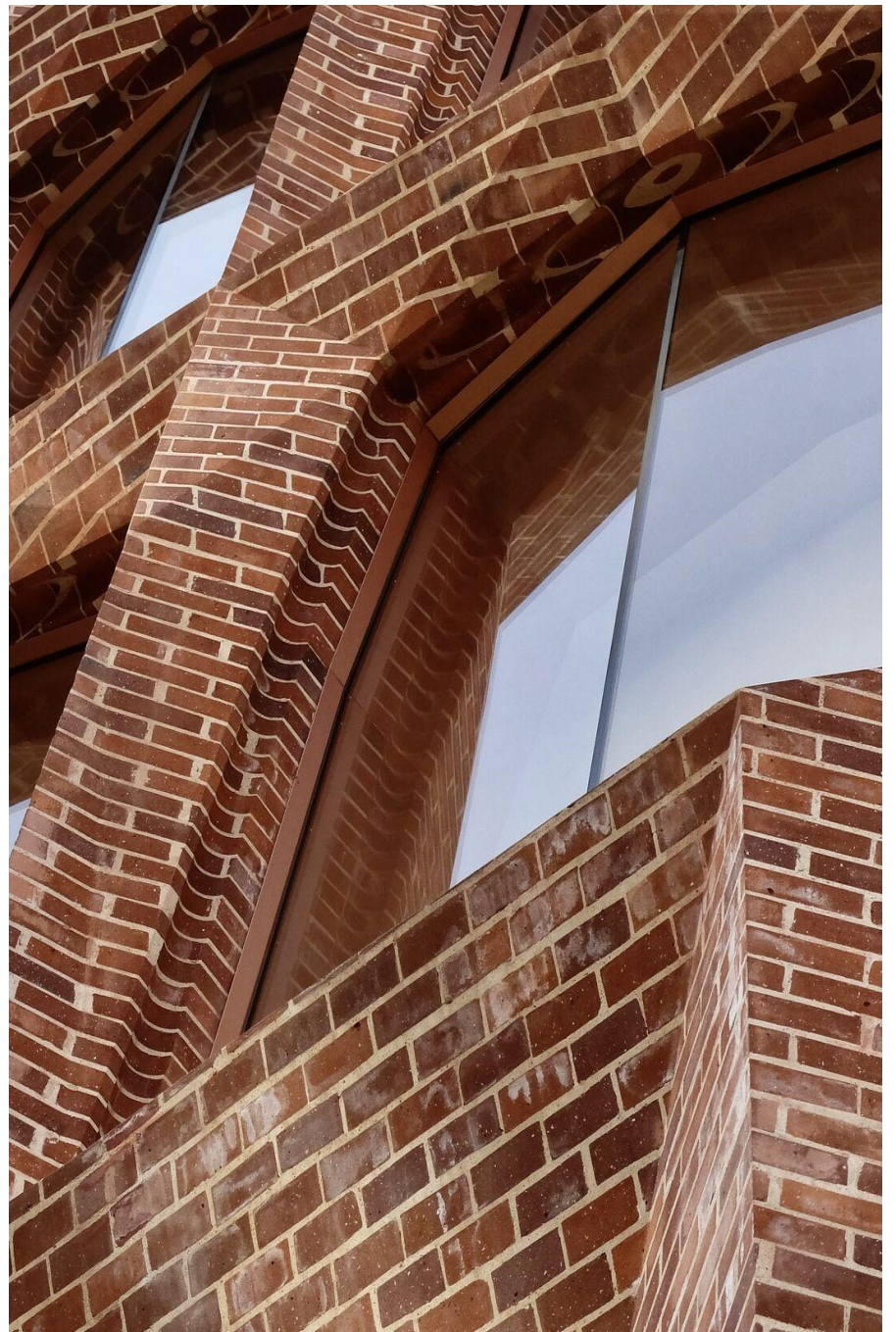
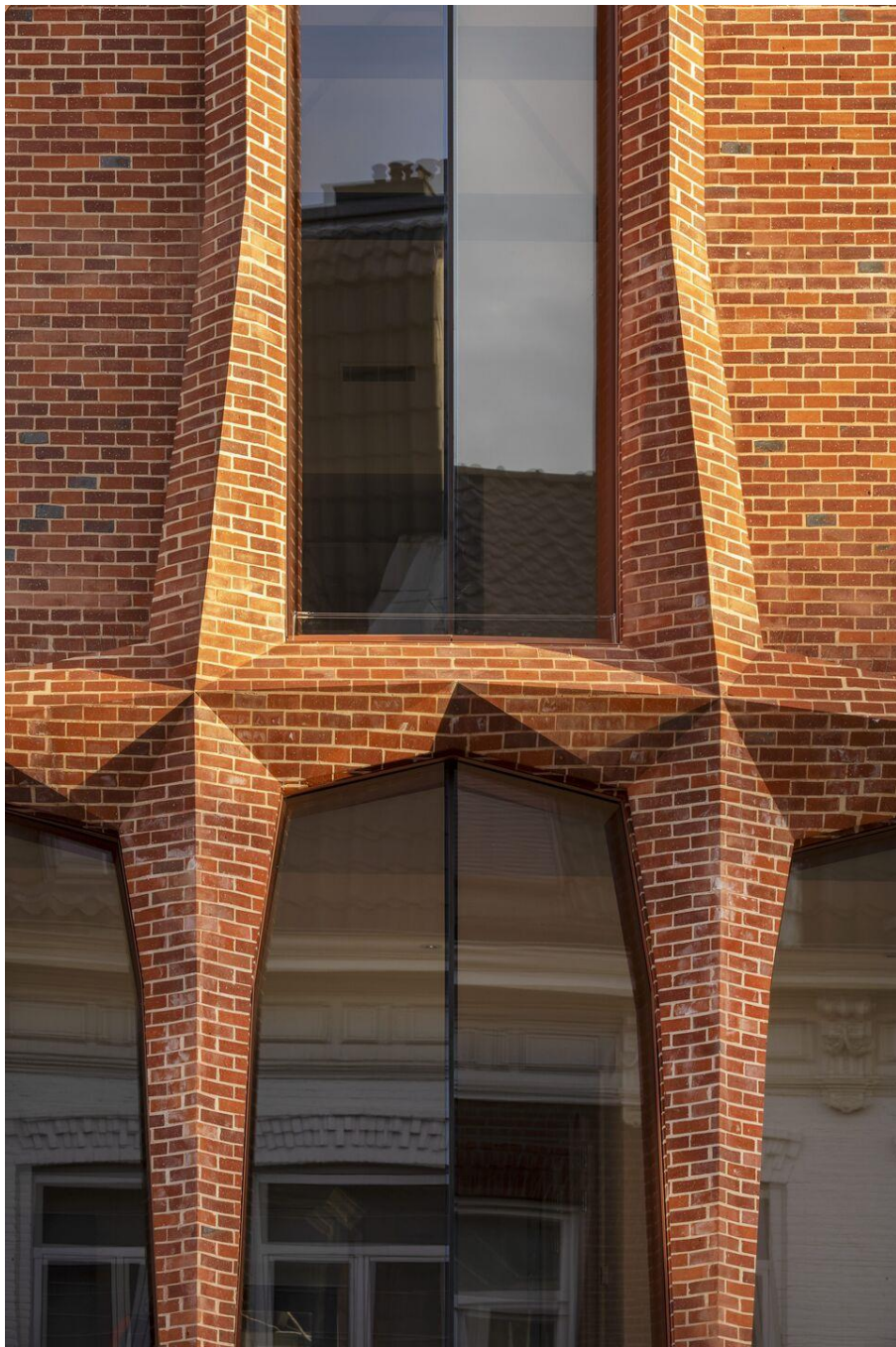
# LOCAL DOLCE & GABANA

AMSTERDAM

DOK ARCHITECTEN







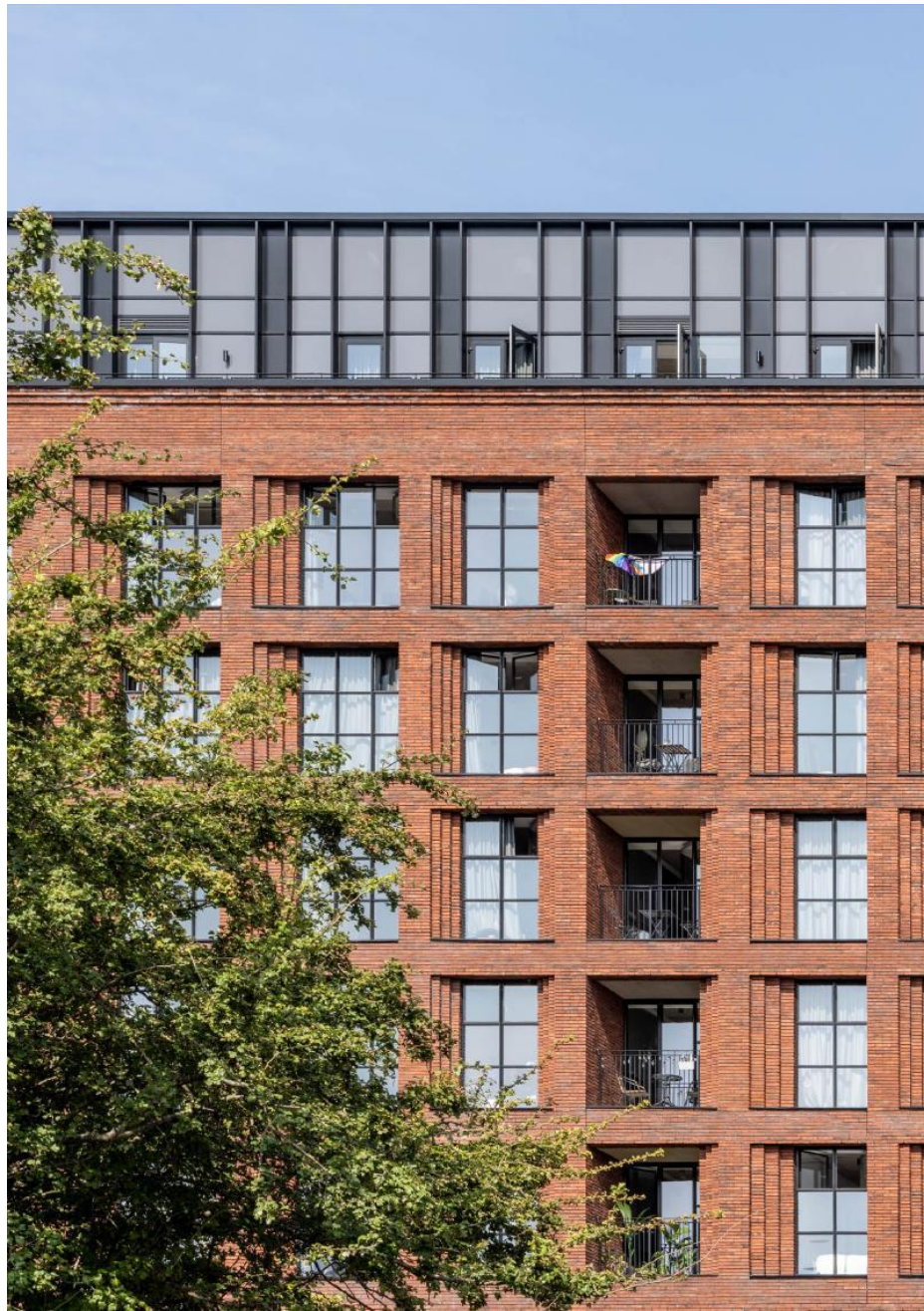




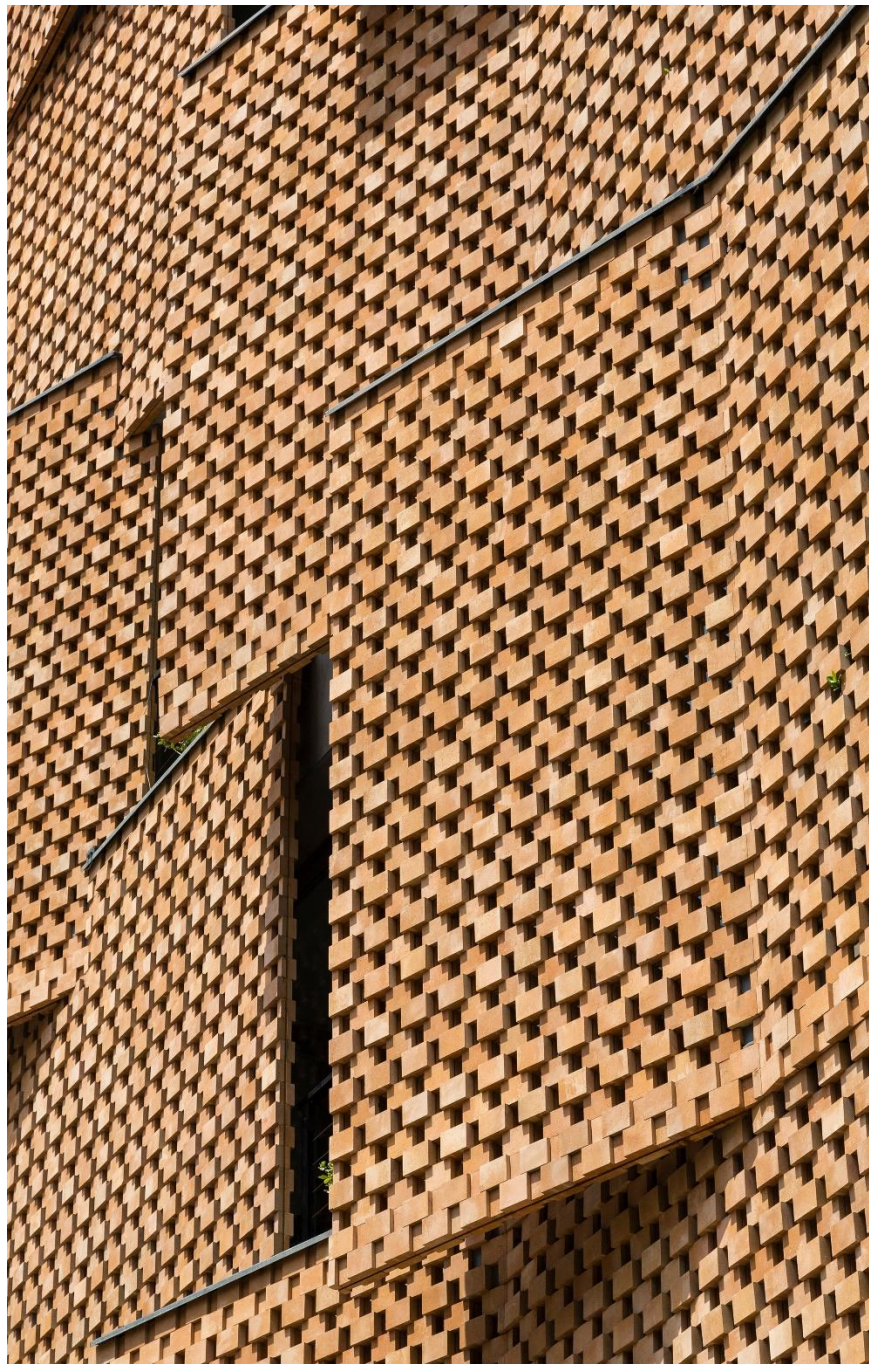




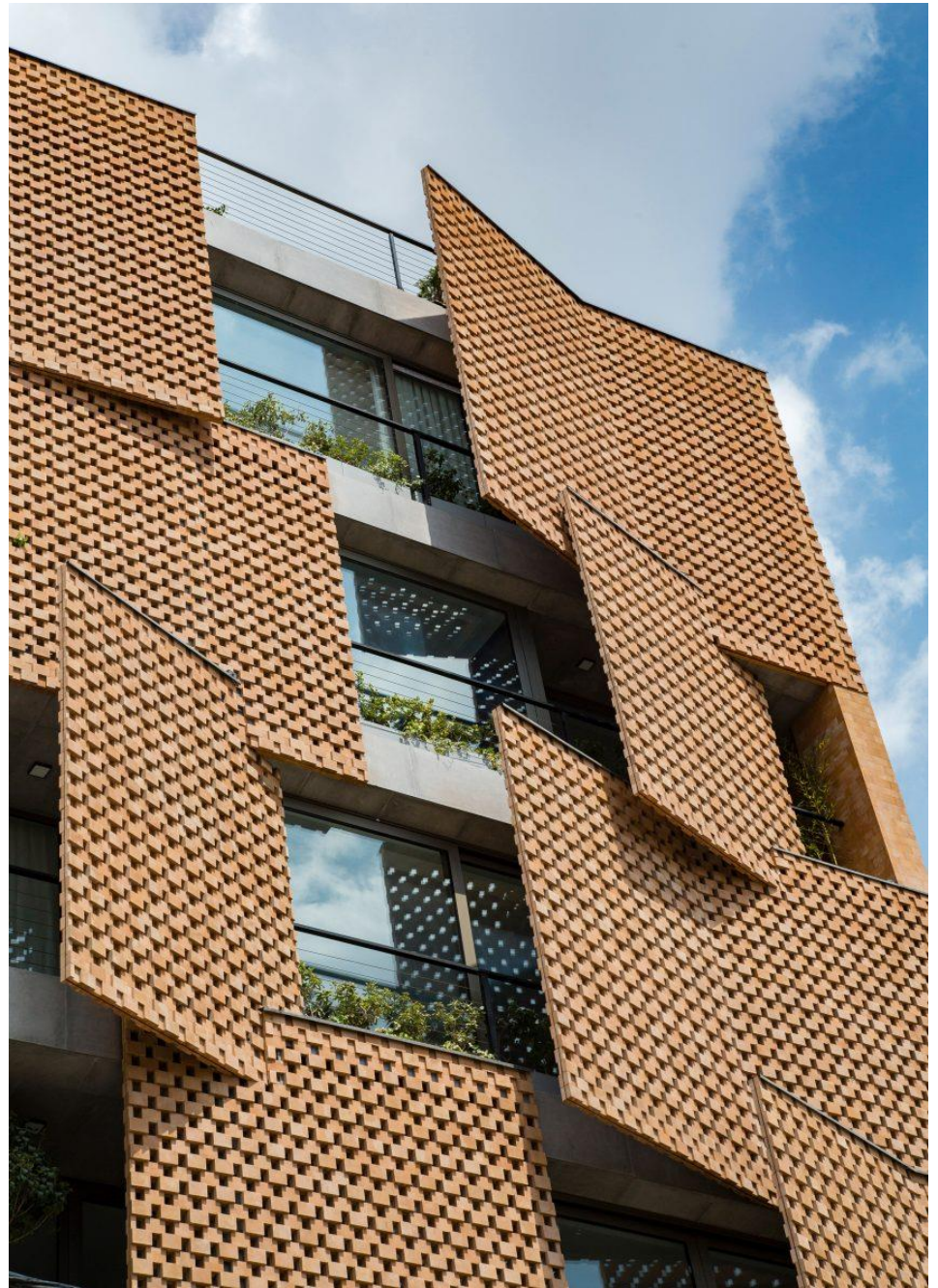
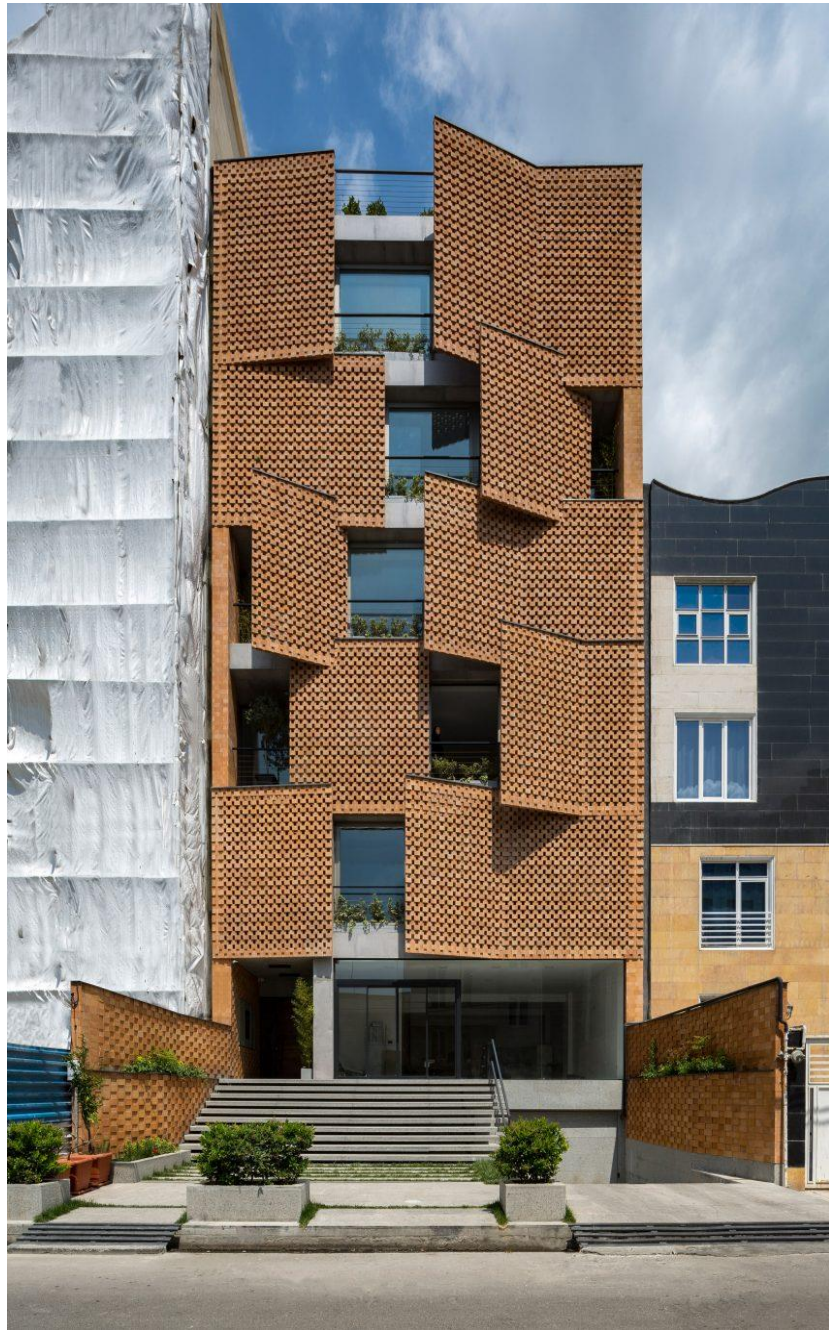








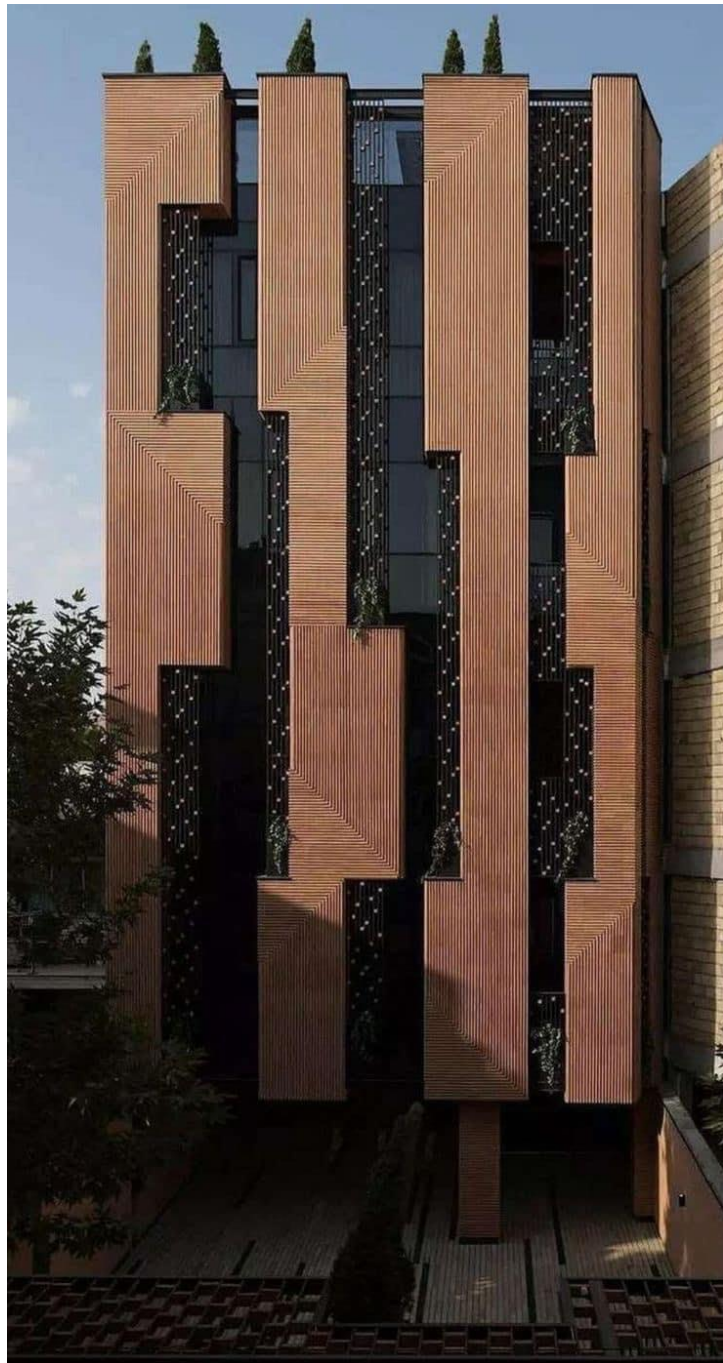








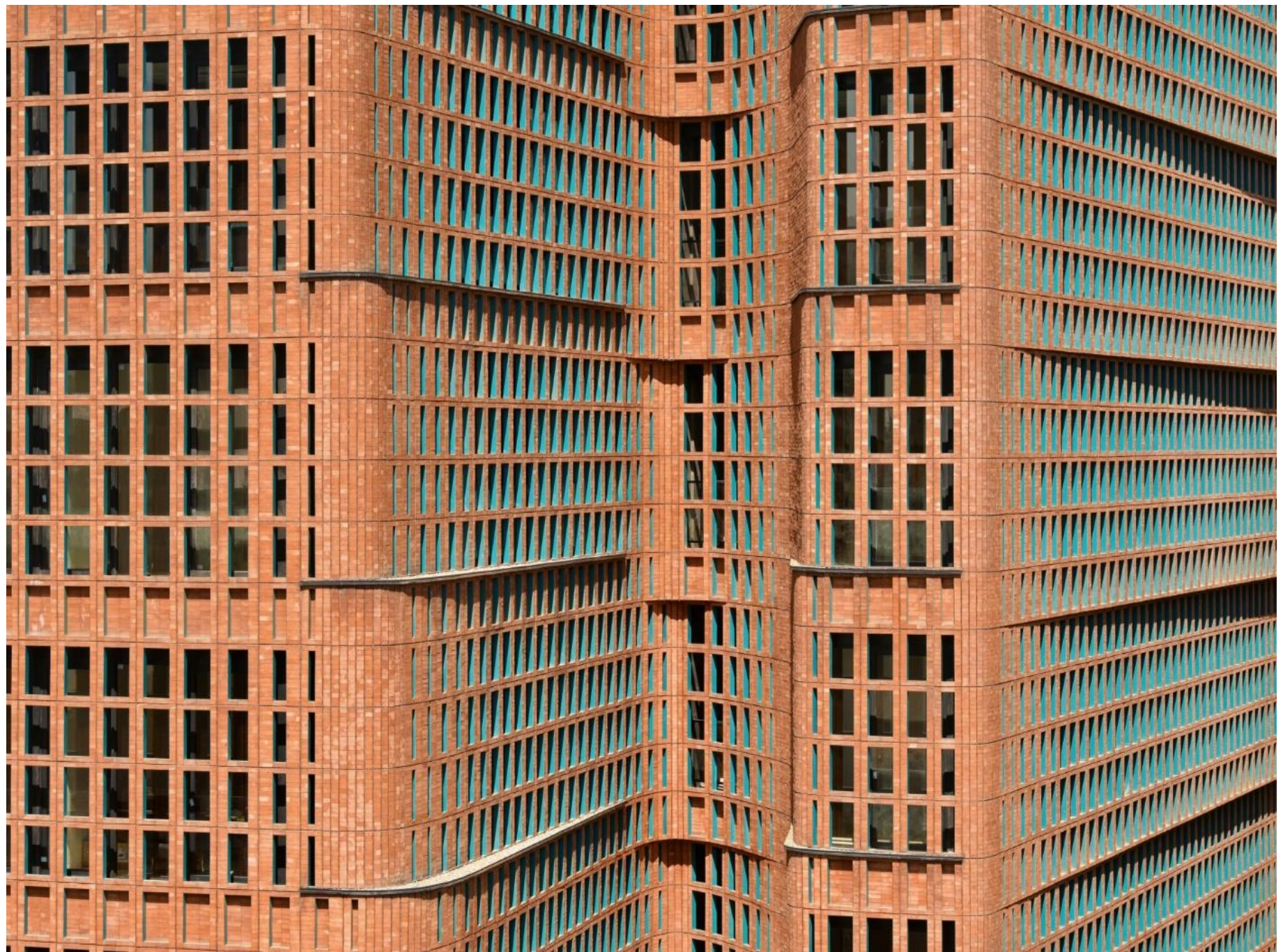




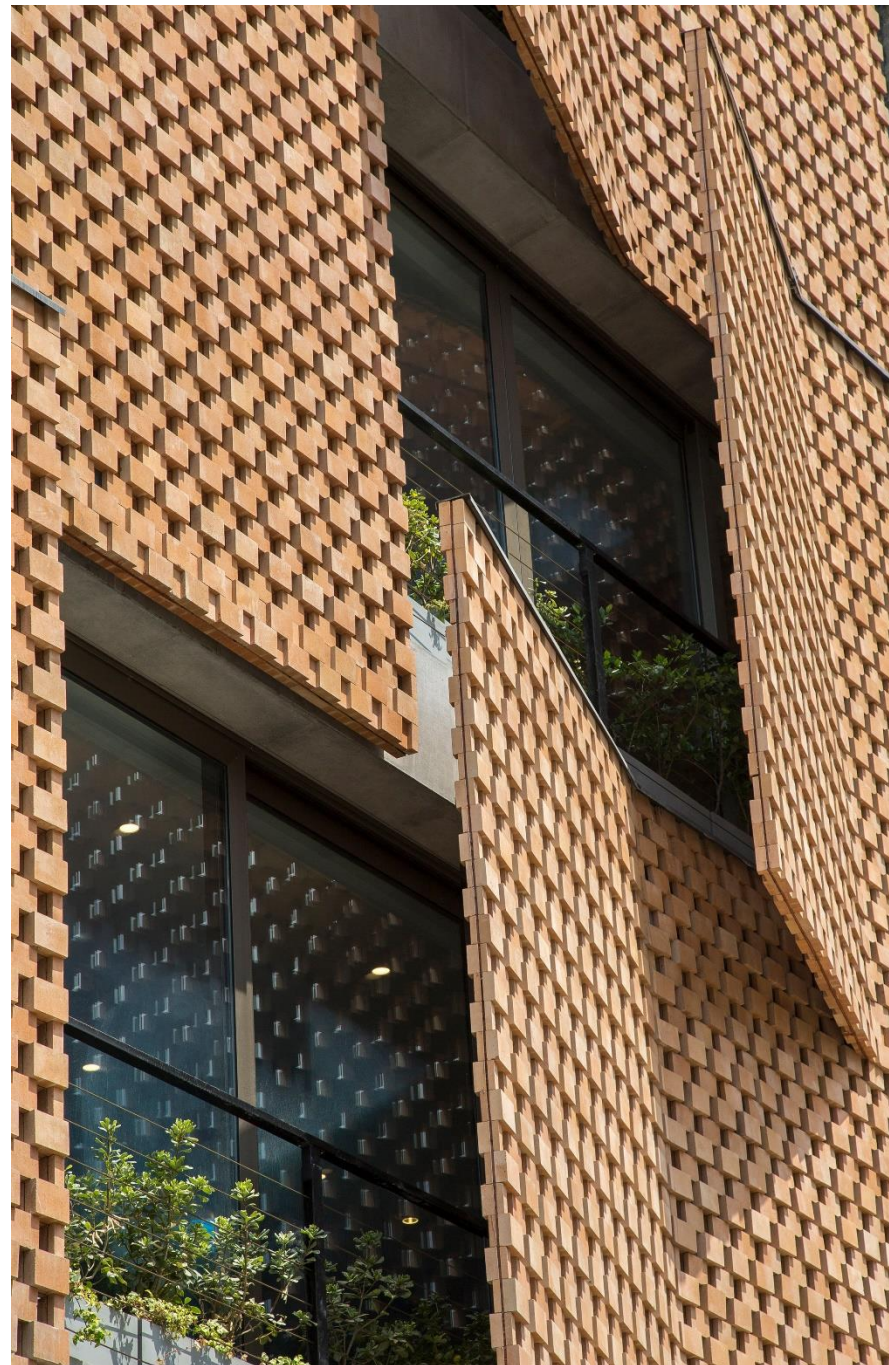








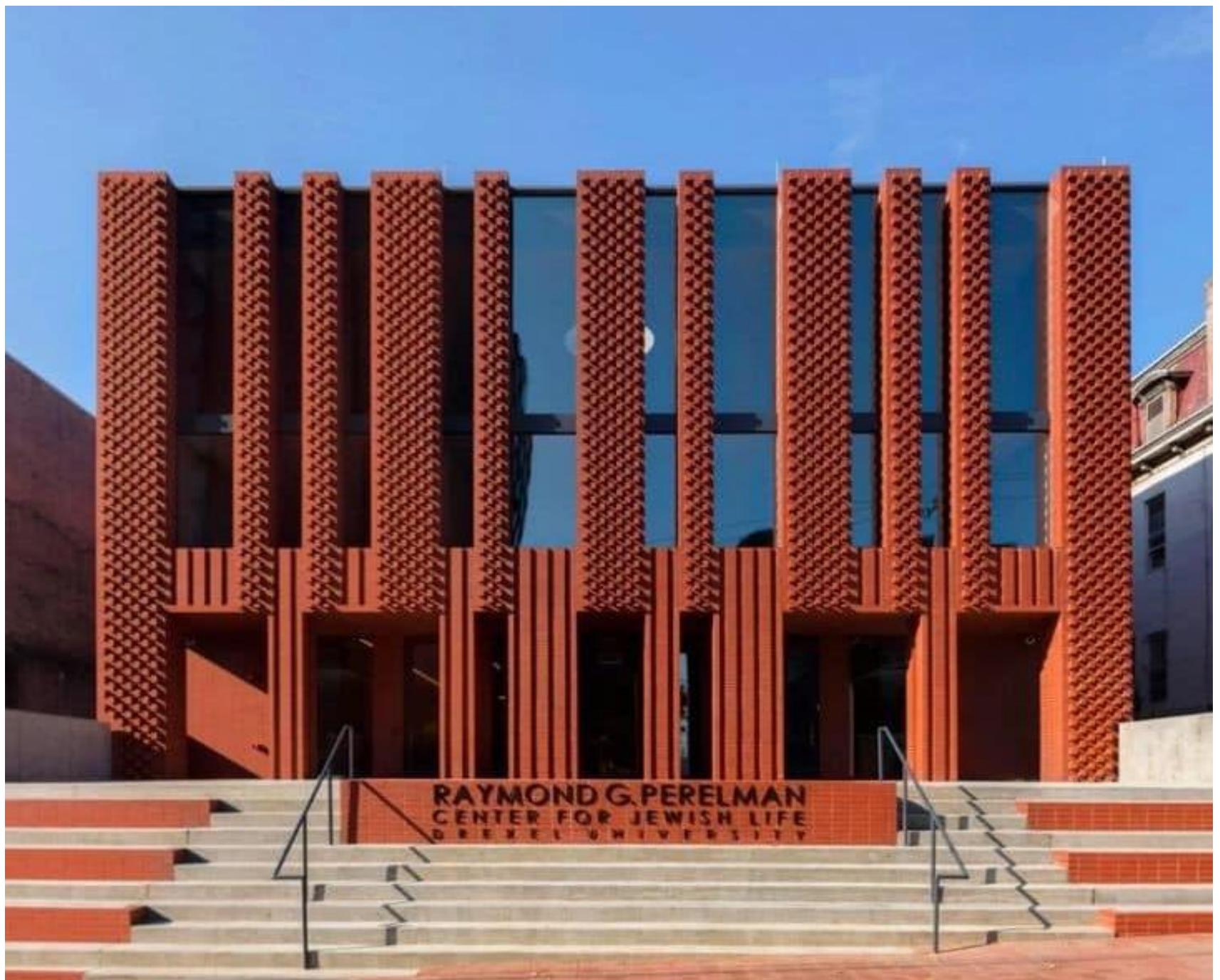






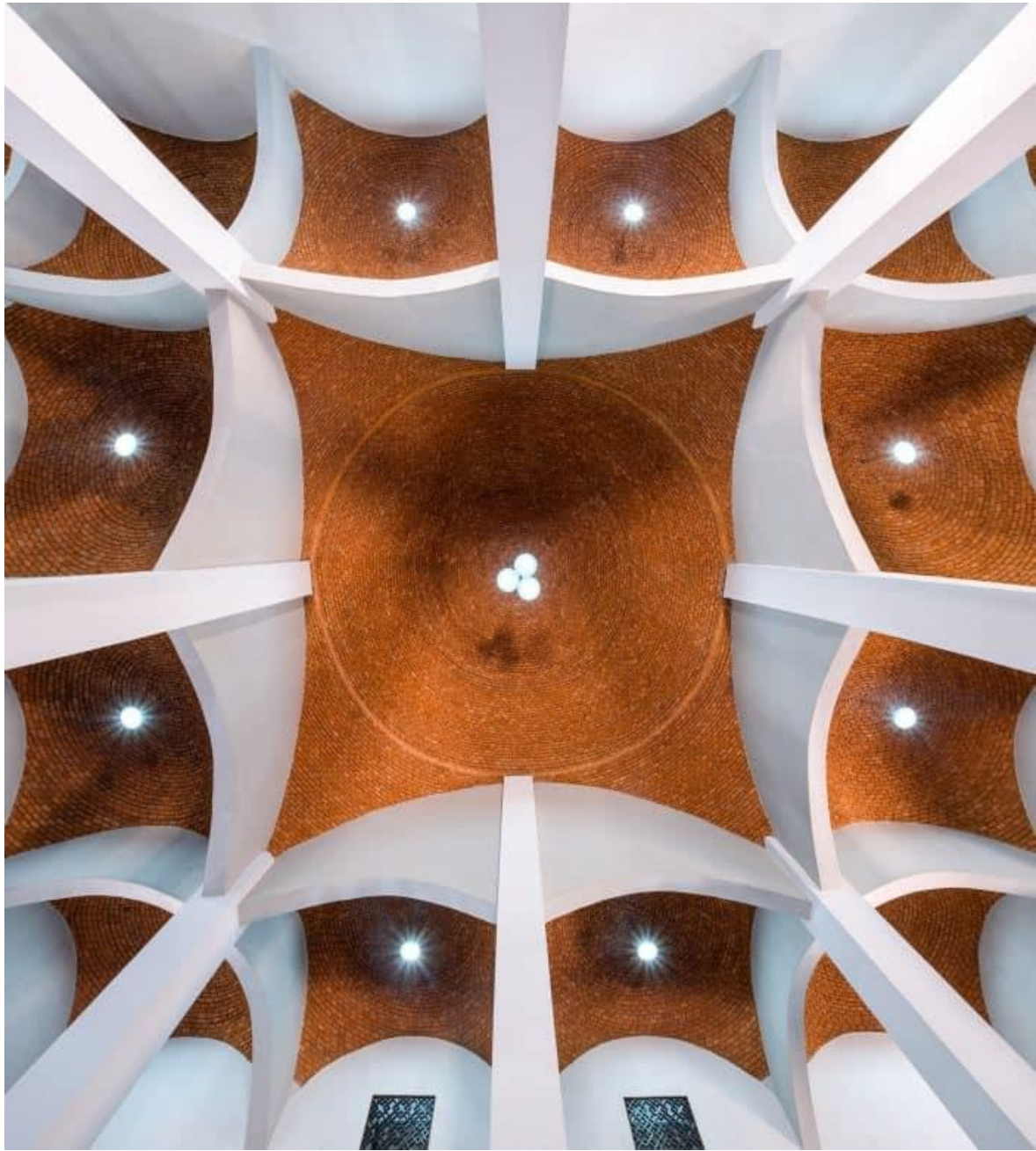






RAYMOND G. PERELMAN  
CENTER FOR JEWISH LIFE  
DREXEL UNIVERSITY





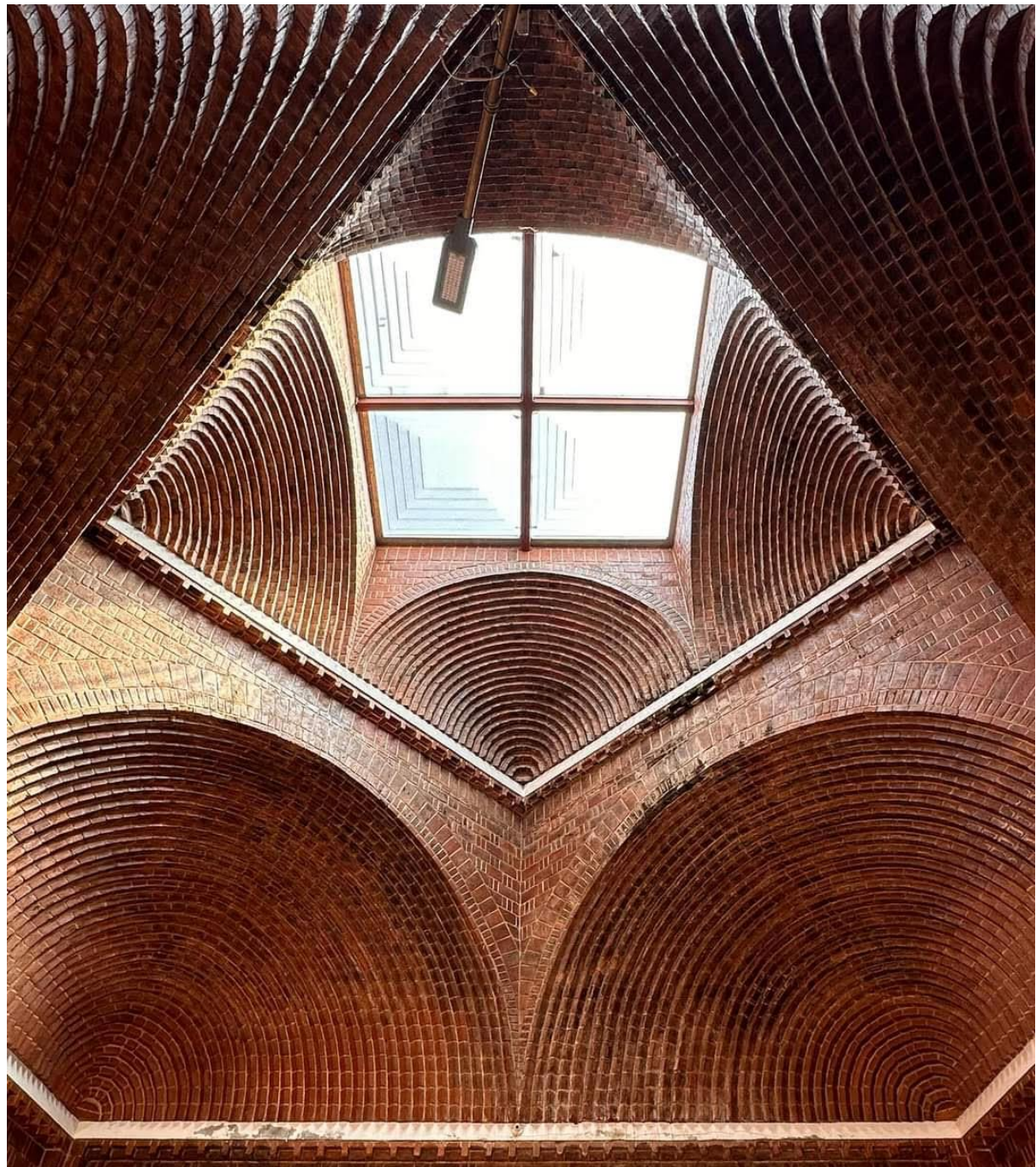




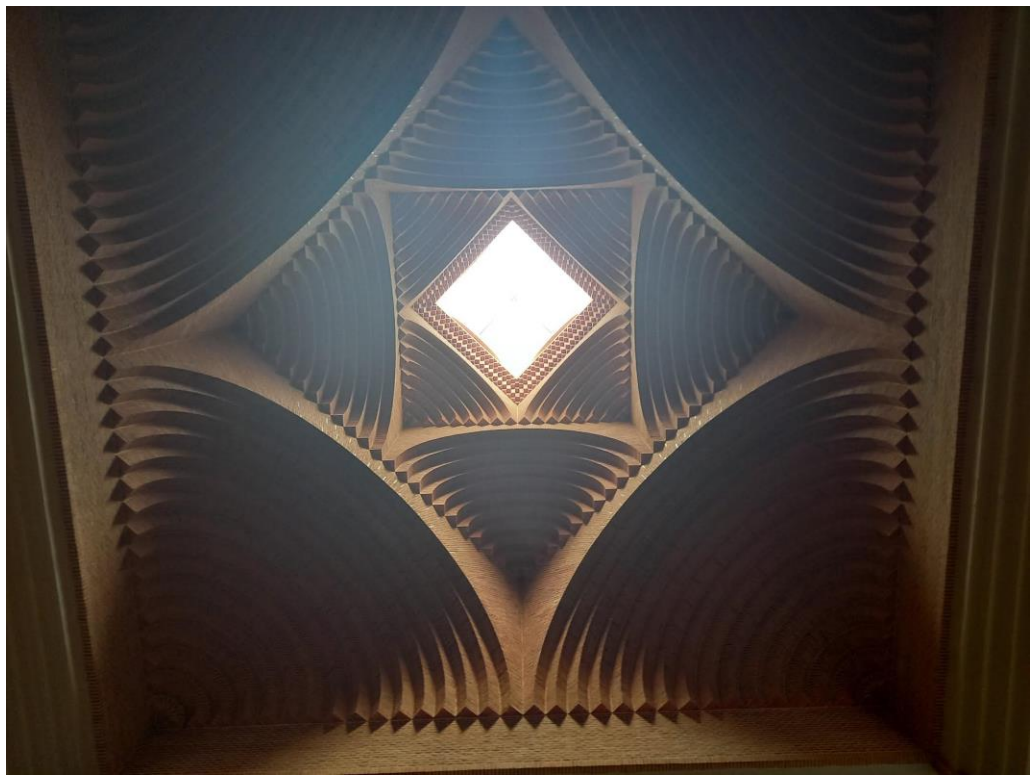


**“El ladrillo es un  
material eterno,  
ligado a la evolución  
del hombre, su  
actualidad depende  
de la creatividad  
humana....”**

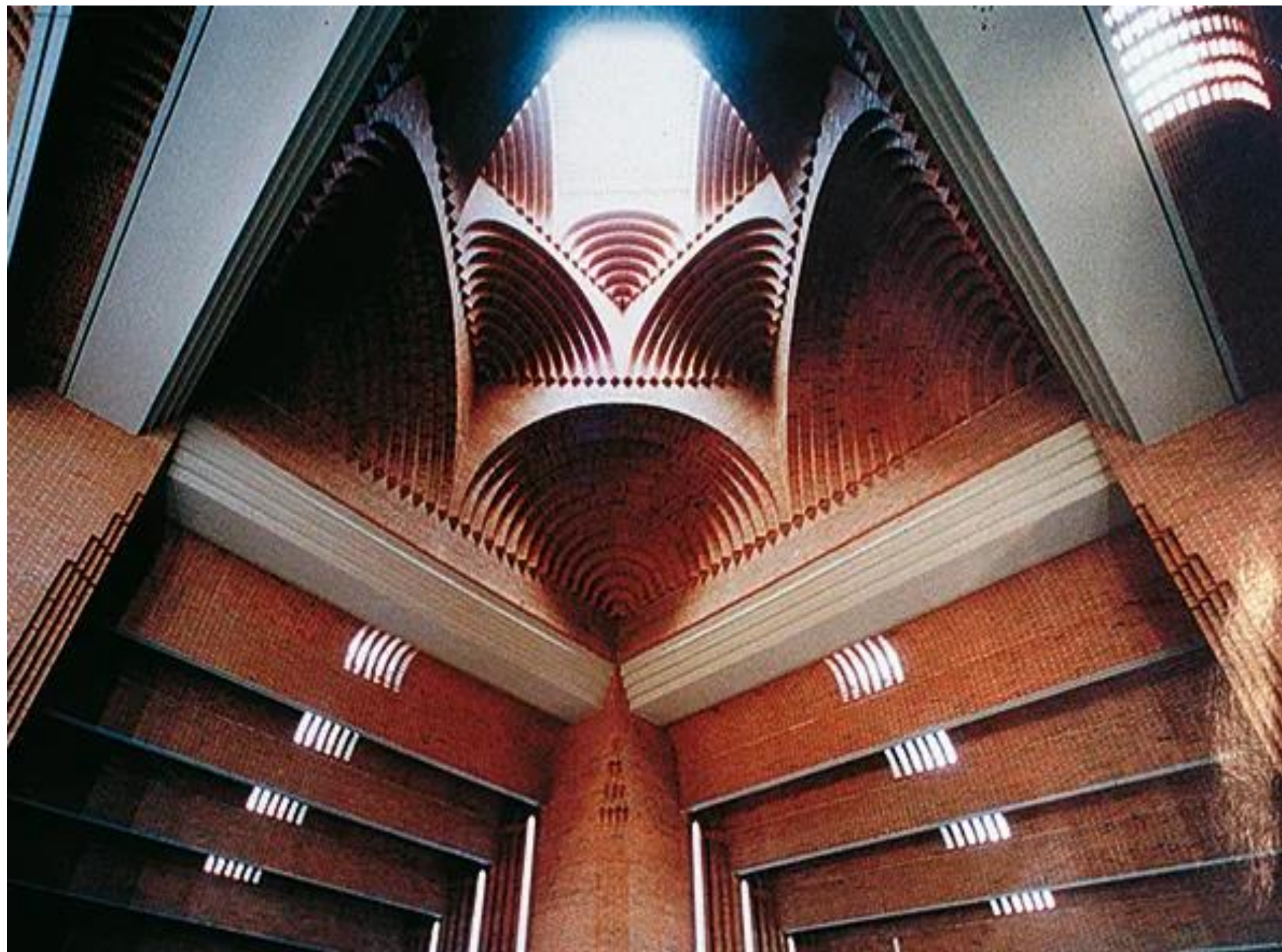
IGLESIA SANTA MARÍA  
DE CANA,  
POZUELO DE  
ALARCÓN, ESPAÑA  
FERNANDO HIGUERAS











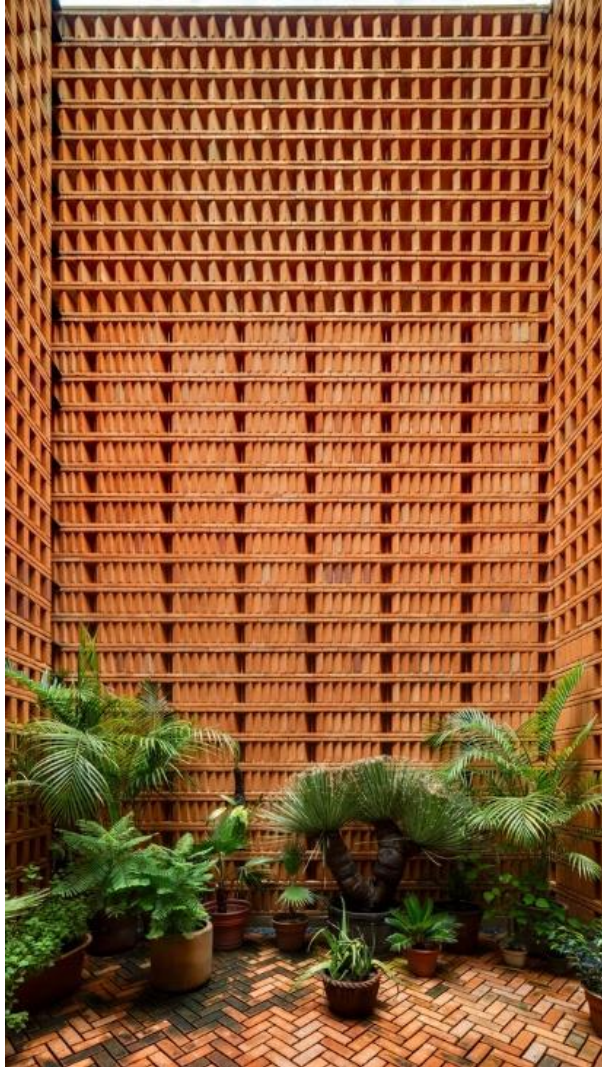


# ESTUDIO ITURBIDE

CIUDAD DE MÉXICO, MÉXICO

TALLER DE ARQUITECTURA

MAURICIO ROCHA + GABRIELA CARRILLO,  
2017







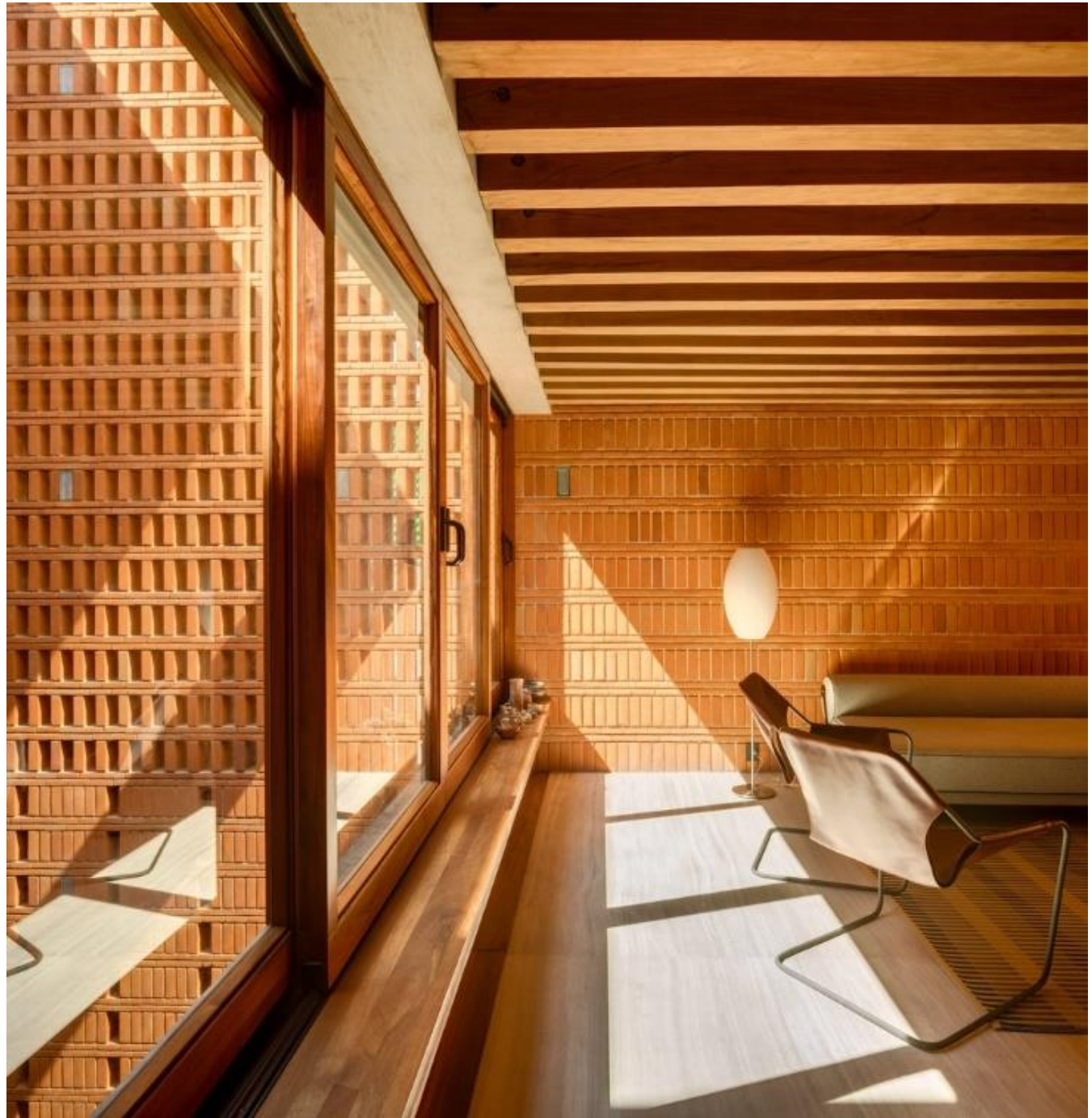














PROF. TITULAR **ESP. ARQ. JUAN CARLOS ALÉ**