

Paseo costero y Club Náutico

Terreno
TELLEGO

DIQUE POTRERILLOS

DIQUE POTRERILLOS

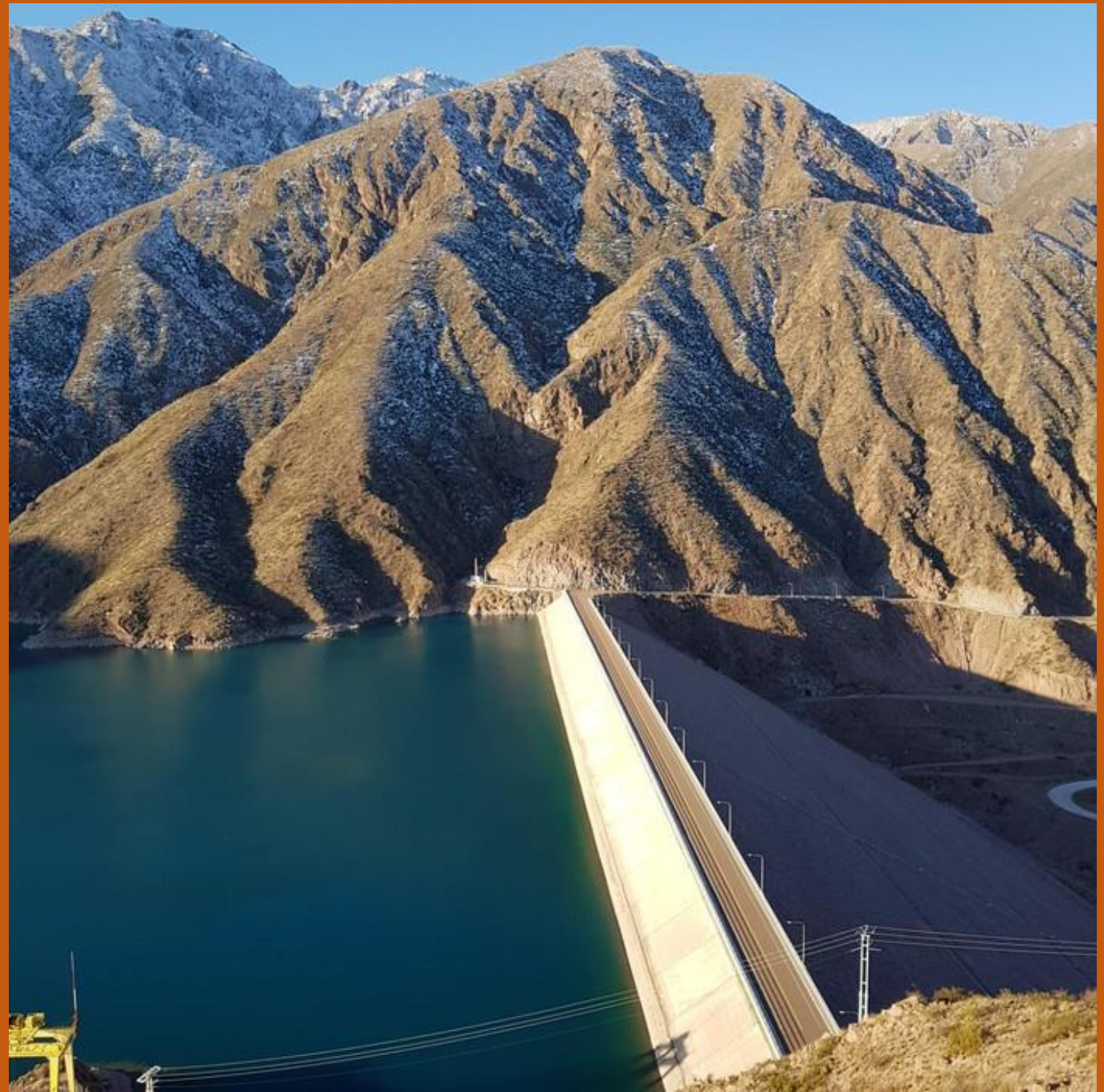


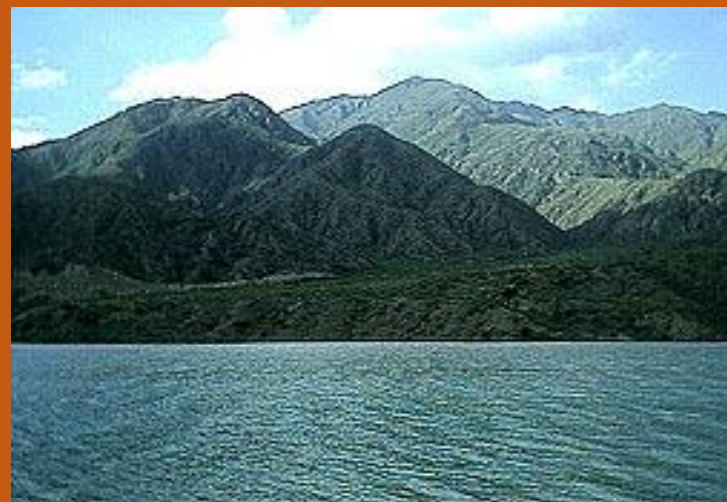
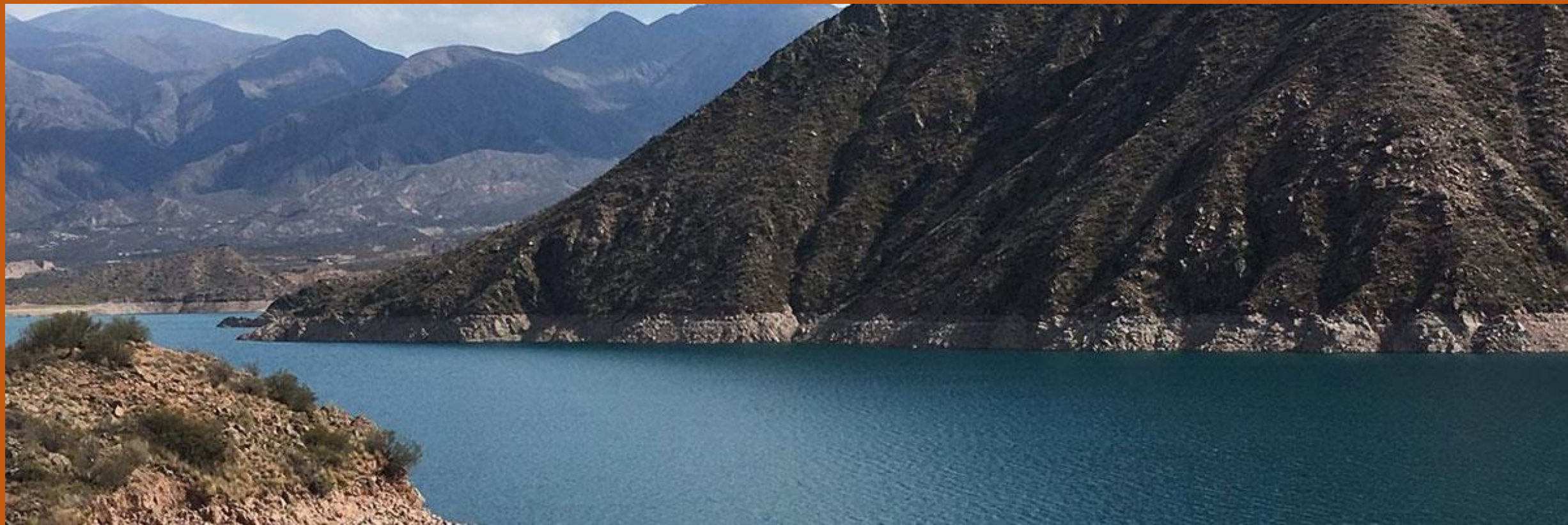


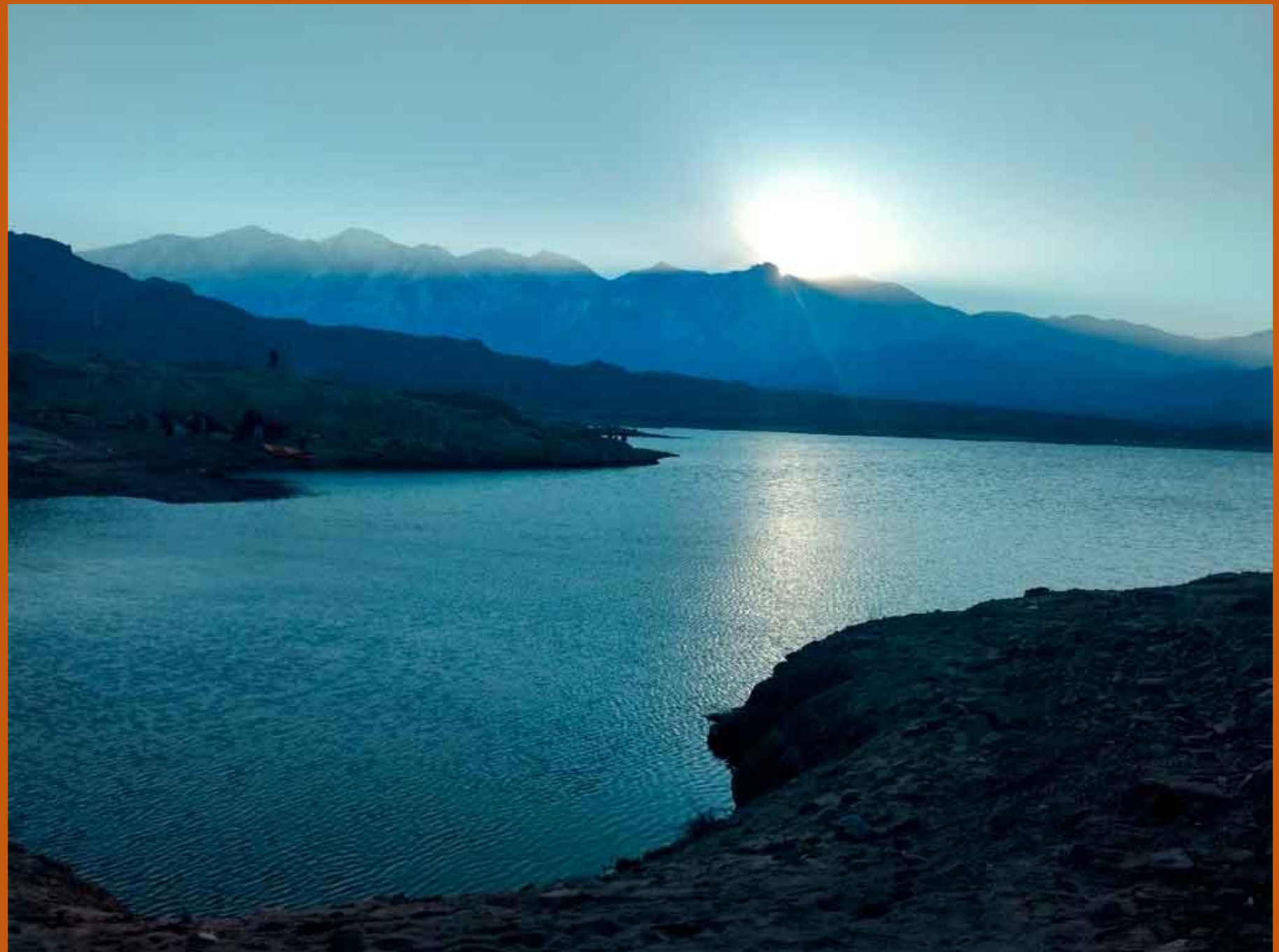








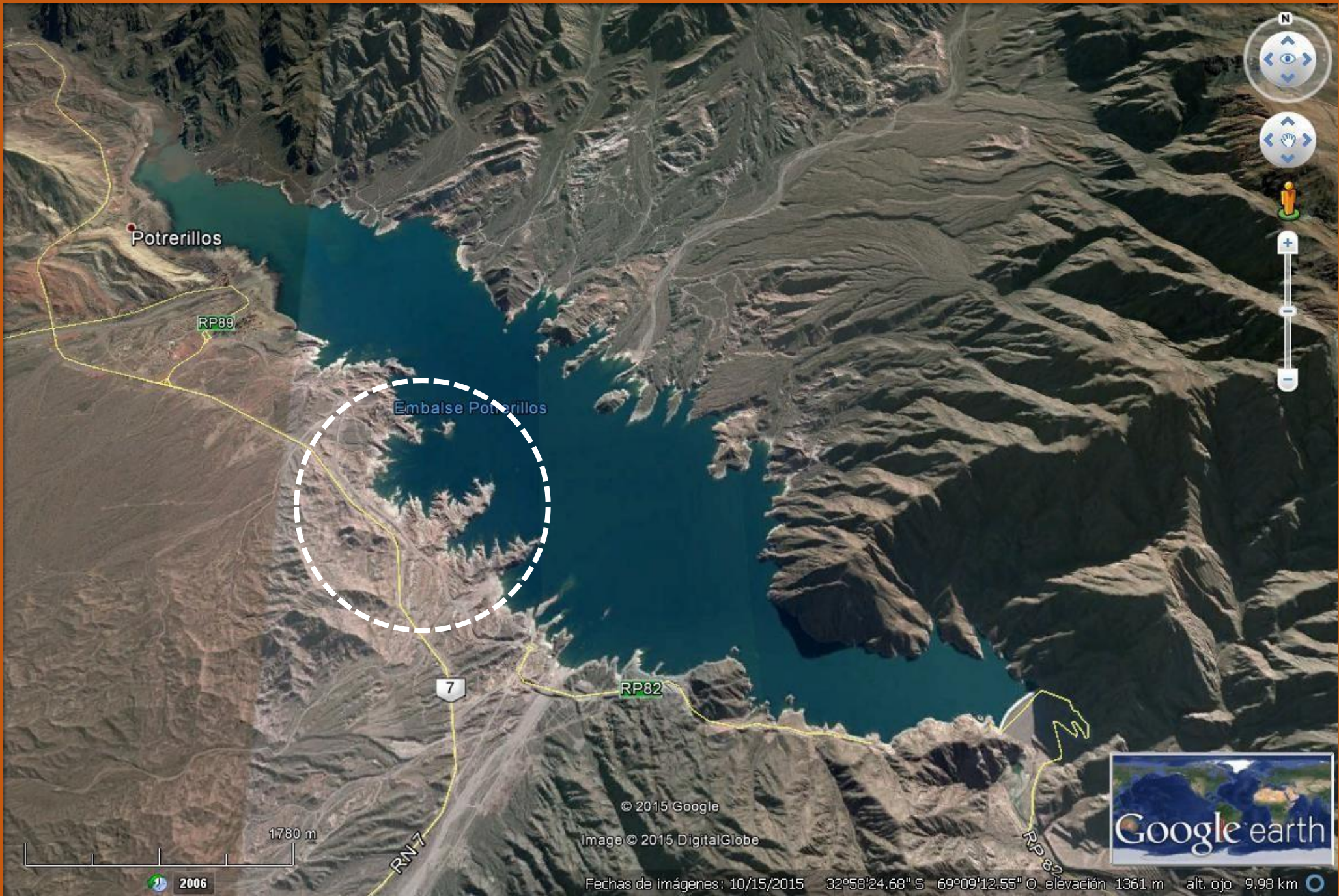












Potrerillos

RP89

Embalse Potrerillos

7

RP82

RN7

RP82

1780 m

© 2015 Google

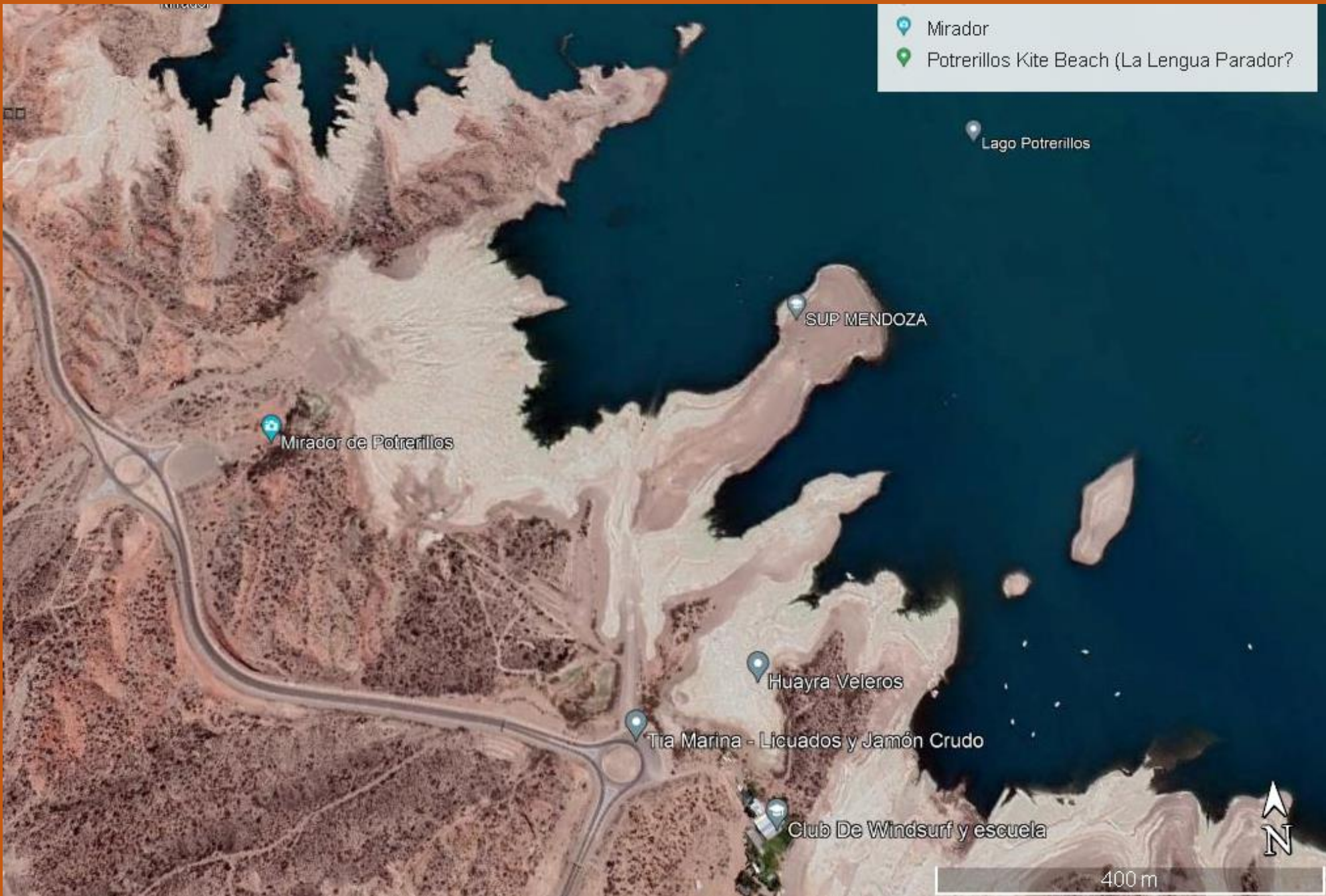
Image © 2015 DigitalGlobe

Fechas de imágenes: 10/15/2015 32°58'24.68" S 69°09'12.55" O elevación 1361 m alt. ojo 9.98 km



2006

TERRENO



- Mirador
- Potrerillos Kite Beach (La Lengua Parador?)

Lago Potrerillos

SUP MENDOZA

Mirador de Potrerillos

Huayra Veleros

Tia Marina - Licuados y Jamón Crudo

Club De Windsurf y escuela

400 m



NIVEL DEL AGUA















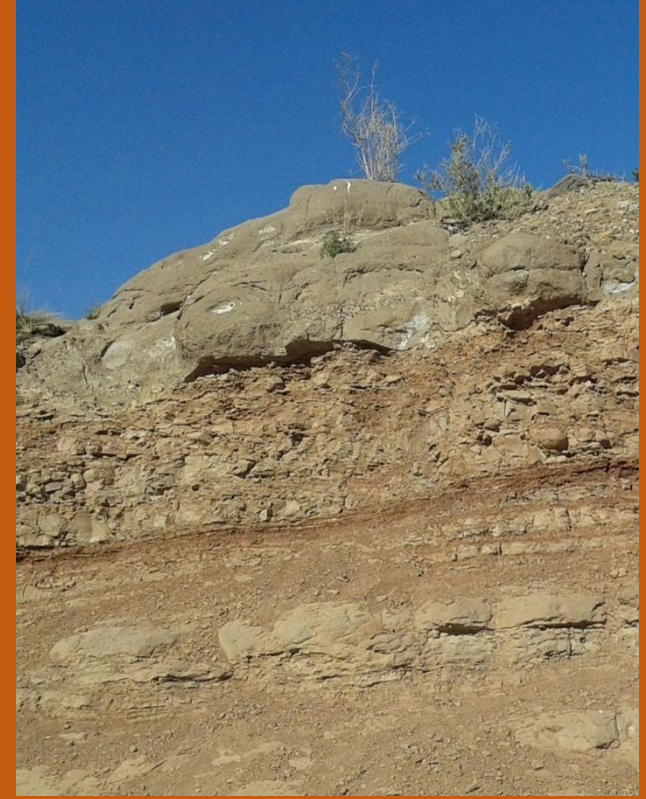




PAISAJE DEL DIQUE POTRERILLOS

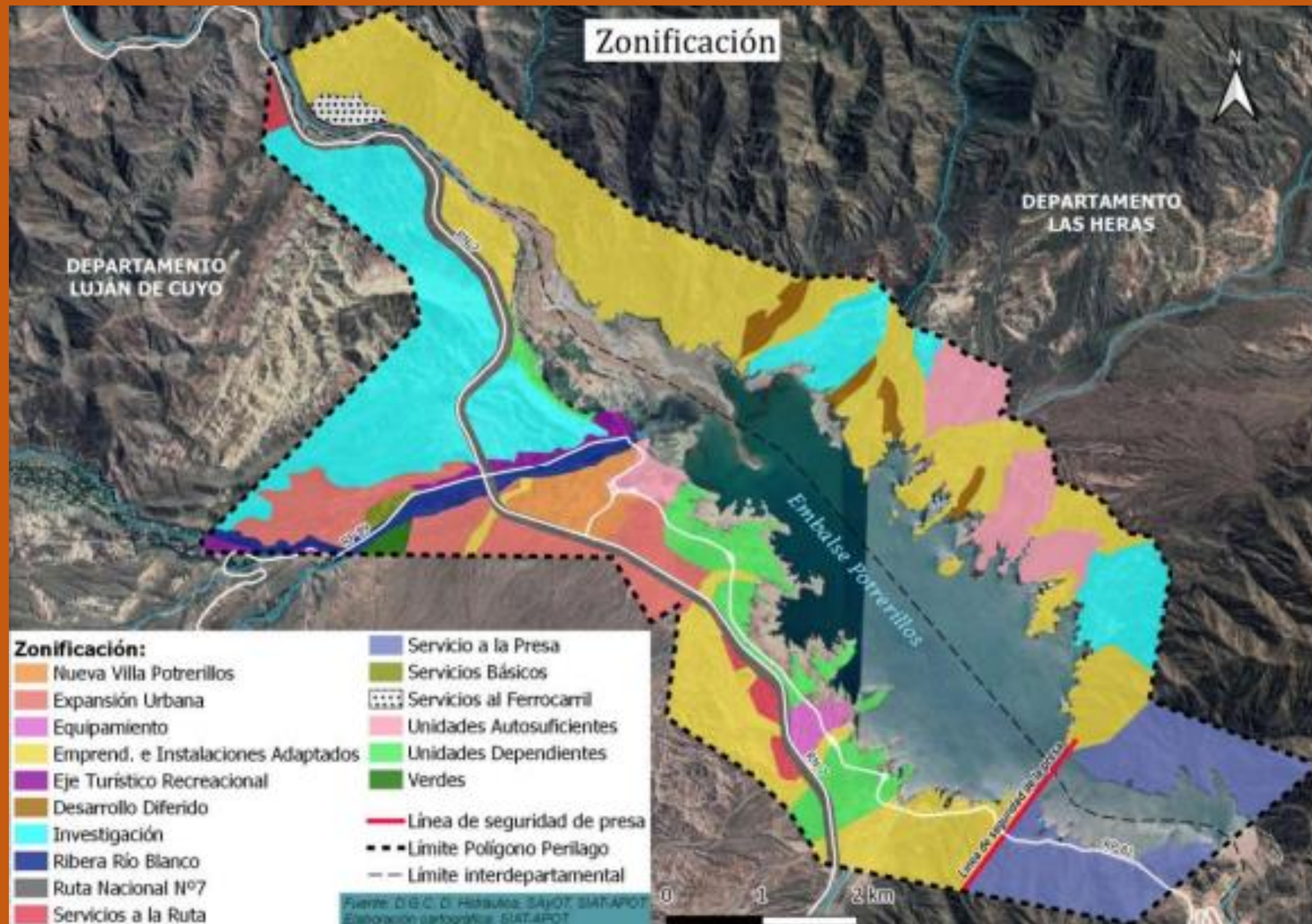


LA TOSCA



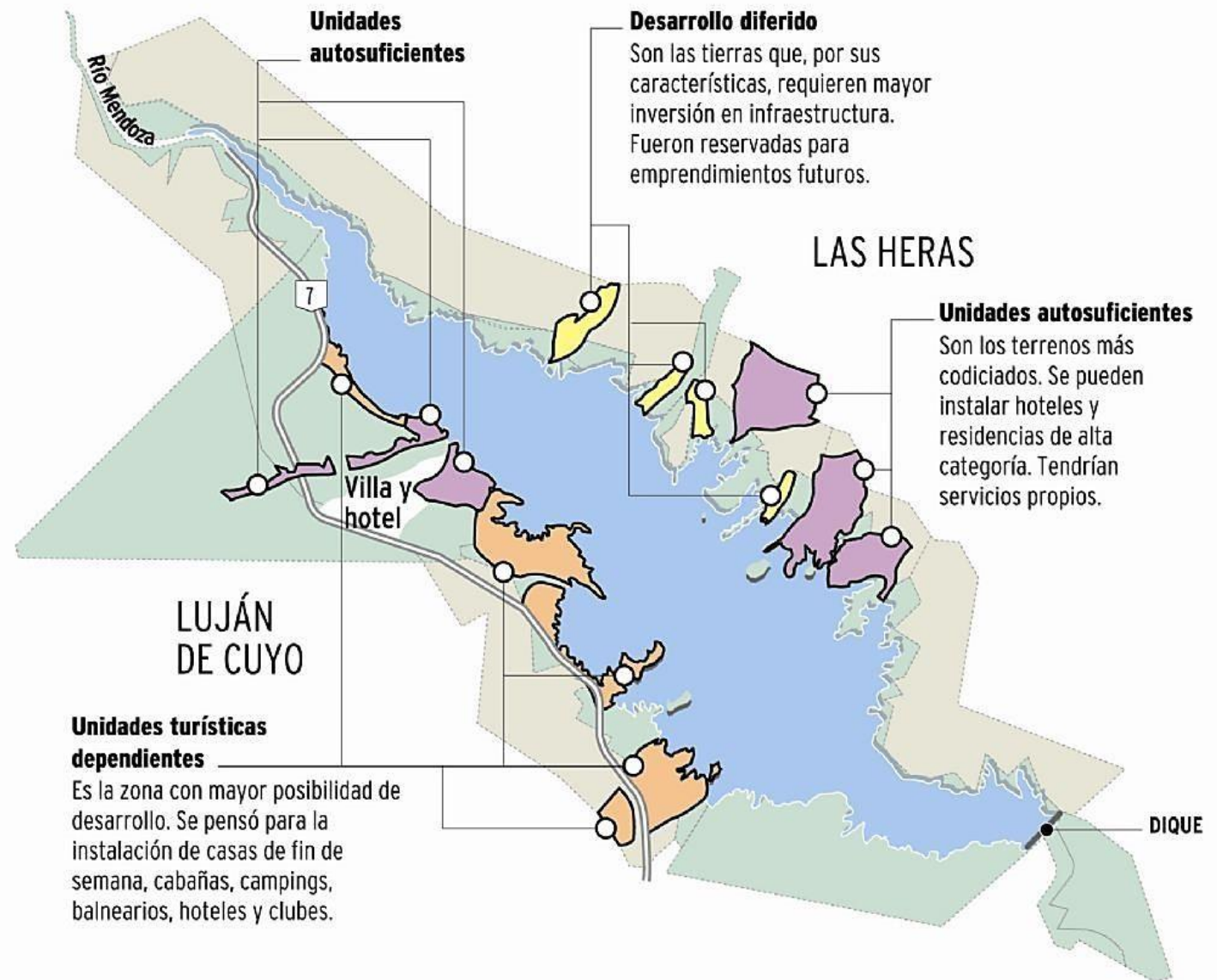


USO DEL SUELO EN EL PERILAGO DEL DIQUE POTRERILLOS



ZONAS SEGÚN SU USO

TERRENOS PRIVADOS TERRENOS FISCALES



Docentes: Prof. Titular Arq. JUAN CARLOS ALÉ
 Prof. JTP Arq. SILVIA SEGOVIA