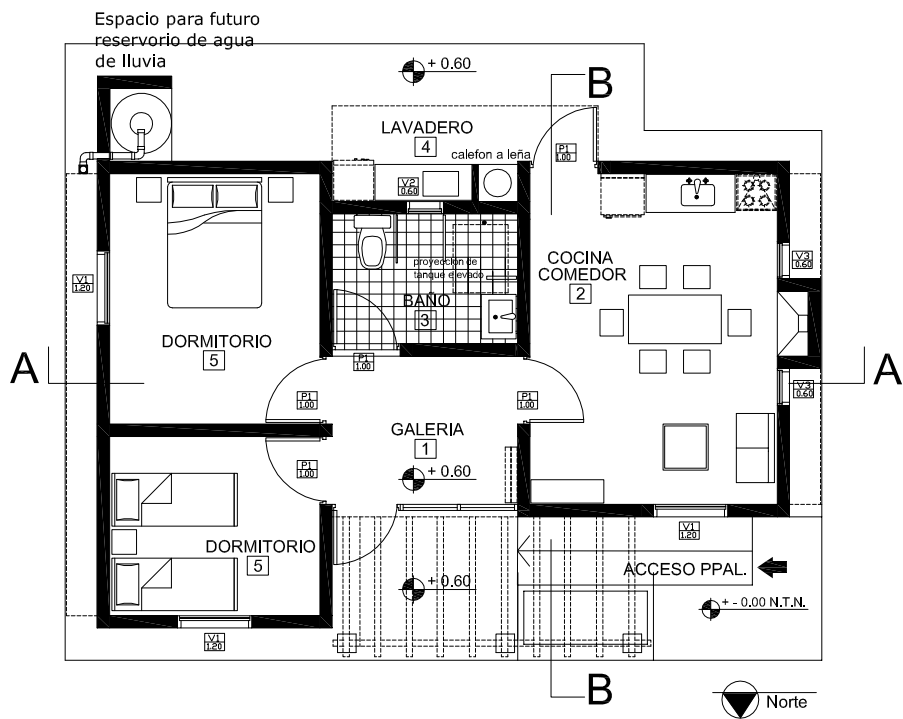


# PROGRAMA DESARROLLO DEL HABITAT RURAL



## TIPOLOGIA N° 5

VIVIENDA 2  
DORMITORIOS

SUPERFICIES  
Sup. Total 77m<sup>2</sup>  
Sup. Cub. 71.95m<sup>2</sup>/ Sup. Aleros 5.05m<sup>2</sup>