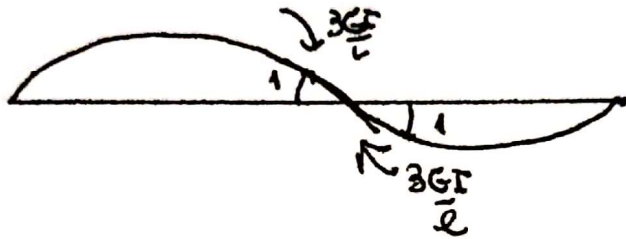
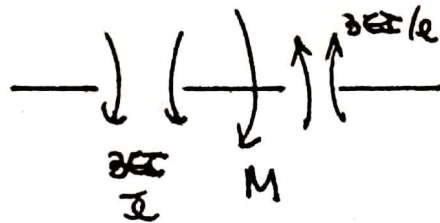


$X_1 = \rightarrow$

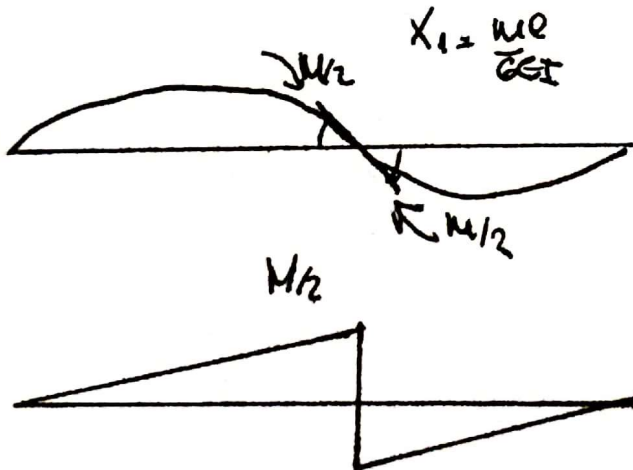


$$r_{11} = \frac{6GI}{l}$$



$$\sum M = 0 \Rightarrow \frac{6GI}{l} X_1 - M = 0$$

$$X_1 = \frac{Ml}{6GI}$$



$$X_1 = \frac{Ml}{6GI}$$

El problema es antisimétrico! Luego se destruye a su vez se reemplaza



Aplicando condiciones de simetría se recupera el resultado original!